



Centennial Elementary

4201 25th Street S, Fargo, ND 58104

DISTRICT

Fargo Public School
District #1

GRADES

K-5

AVERAGE ENROLLMENT

572

ARRIVAL

8:20 a.m.

DISMISSAL

2:42 p.m.

Existing Conditions

Centennial Elementary is a kindergarten through 5th grade school in the Fargo Public School District. It is located approximately 4.5 miles southeast of Downtown Fargo in the city's Centennial Neighborhood. The neighborhood consists primarily of residential single-family homes. Within the Centennial boundaries, per capita income and household income are much higher than the district average. Seventeen percent of Centennial students are eligible for free and reduced lunch programs. Around five percent of students participate in English Language Learners programs.

The Centennial school facility was constructed in 1989. The campus is bound by Copperfield Court to the west, 40th Avenue S to the north, 25th Street S to the east, and Oak Creek Drive SW to the south. There are school speed zones designated along 40th Avenue S from west of 28th Street S to east of 25th Street S and along 25th Street S from north of 40th Avenue S to 44th Avenue S. Both 25th Street S and 40th Avenue S have high traffic volumes with high observed traffic speeds. Both roadways

are significant barriers to walking and biking to Centennial Elementary. Currently, Fargo Public School District considers these roadways as barriers to walking and biking to school, so all students who live north and south of these roadways are bussed. There is a HAWK signal at the 40th Avenue S and 28th Street S intersection to facilitate safe pedestrian crossings of 40th Avenue S. At the 40th Avenue S and 25th Street S intersection, poor driver yielding behavior creates unsafe crossings. Long pedestrian wait times also encourage poor pedestrian and cyclists behavior.

On campus, there are two comb style racks located near the front door of the school. The comb style rack does not allow for locking of the frame and can result in wheel damage. The school also uses an adult crossing guard during drop-off and pick-up in the parking lot.



▲ The 40th Avenue S and 25th Street S intersection is very wide and sees poor driving yielding behavior when turning.



▲ From 25th Street S, there is a double right-turn. The driveway is very wide with no marked crosswalk.

Circulation Challenges

The intersection of 40th Avenue S and 25th Street S (both minor arterial roadways) is adjacent to the Centennial Elementary campus. This intersection was observed with poor driver yielding behavior and long delays for pedestrians and cyclists. The 25th Street S and Rose Creek Drive intersection also presents a crossing challenge, where pedestrians and cyclists have long delays waiting for a walk signal. Neither intersection has a leading pedestrian interval, which could improve pedestrian visibility and safety.

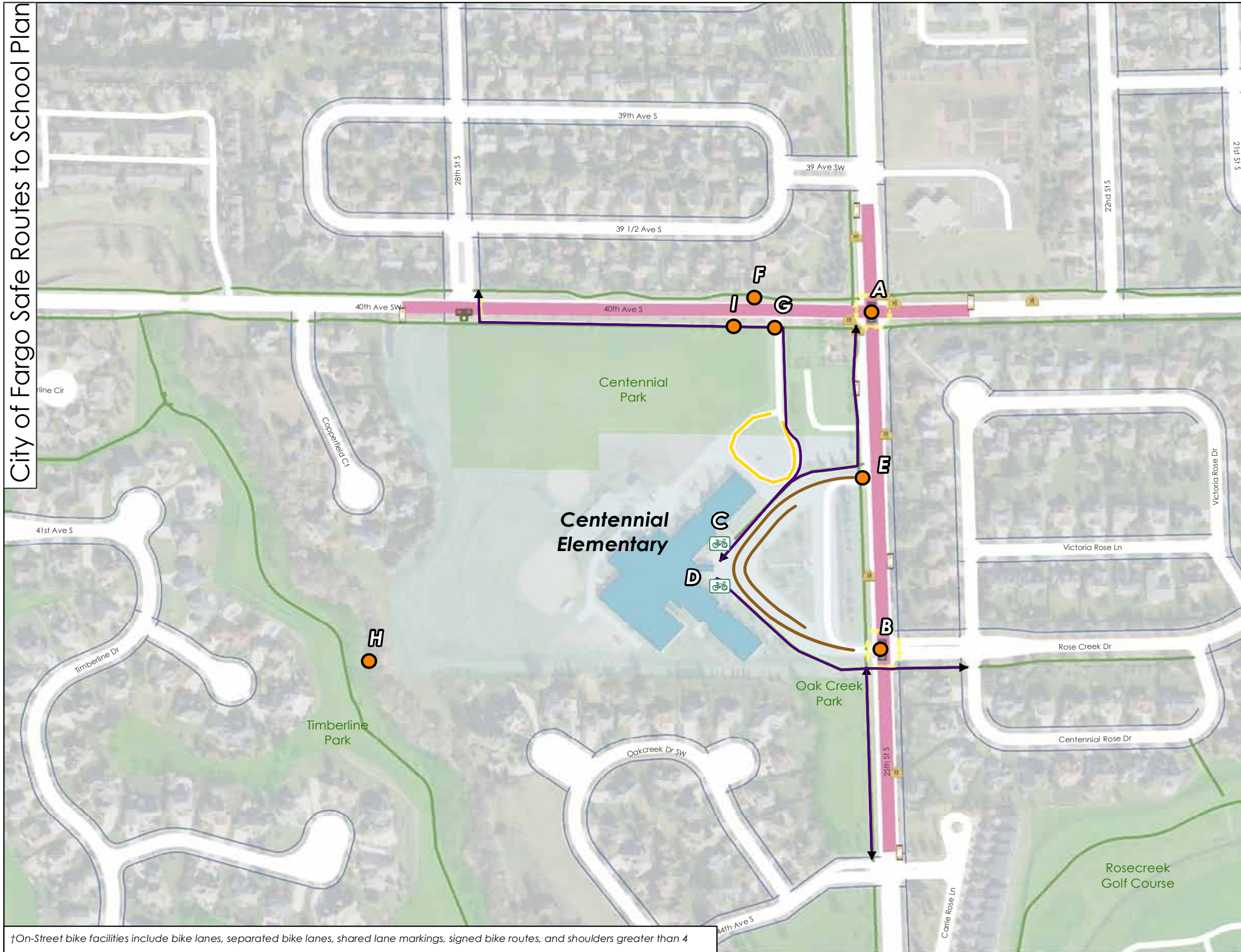
The 25th Street S entrance to the drop-off loop features a long pedestrian crossing with a double right turn for southbound 25th Street S traffic. This is a potential safety challenge. Drivers were also observed speeding in the 25th Street S speed zone during school arrival and dismissal observations.

There are multiple comb style bike racks at Centennial Elementary that are well used and placed at the front of the building, encouraging use.

West of the campus is a drain that creates a barrier to the housing developments west of the drain from the school. There is also a shared-use path that runs along the west side of the drain. A connection over the drain could make walking and biking easier for more students and provide an alternative to busing for these students.

CENTENNIAL ELEMENTARY CHALLENGES

LOCATION	CHALLENGE
A 40th Ave S / 25th St S	Long crossing distances Poor driver yielding behavior of turning traffic Long wait for pedestrian crossing signal No leading pedestrian interval Damaged truncated domes
B Rose Creek Dr / 25th St S	Signal requires push button for walk sign Faded crosswalk markings No leading pedestrian interval
C Front of School	Comb style rack does not allow locking of frame and can lead to wheel damage
D Front of School	Comb style rack does not allow locking of frame and can lead to wheel damage
E 25th St S at entrance driveway	Double right turn from street Long crossing distances and exposure in apron No marked crosswalk across driveway
F 40th Ave S between 25th and 28th St S	No lights present on sign that says speed zone "when flashing"
G 40th Ave S / bus loop entrance	Unmarked crosswalk of major driveway on popular route to / from school
H West of school	No connection from trail to campus
I 40th Ave S between 25th and 28th St S	Absent school zone sign on south side of the street, even though this is in the speed zone



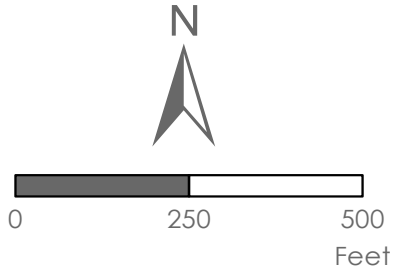
Observed Circulation & Challenges Centennial Elementary

Key*

- Bus Circulation
- Challenge
- Shared Bus and Vehicle Lane
- Vehicle Drop-off and Pick-up
- ↔ Observed Walking and Biking Routes
- Bike Rack
- Challenge

Existing Infrastructure*

- Building Footprints
- School Grounds
- School Speed Zones
- - - On-Street Bike Facility†
- Sidewalk
- Shared Use Path
- ⚡ Crosswalk Marking
- Signalized Intersection
- HAWK Signal
- Other Flashing Sign
- Pedestrian Crossing Sign
- 4-Way Stop Sign



METROCOG

*Legend Common to All Maps - Not all Features Present on All Maps

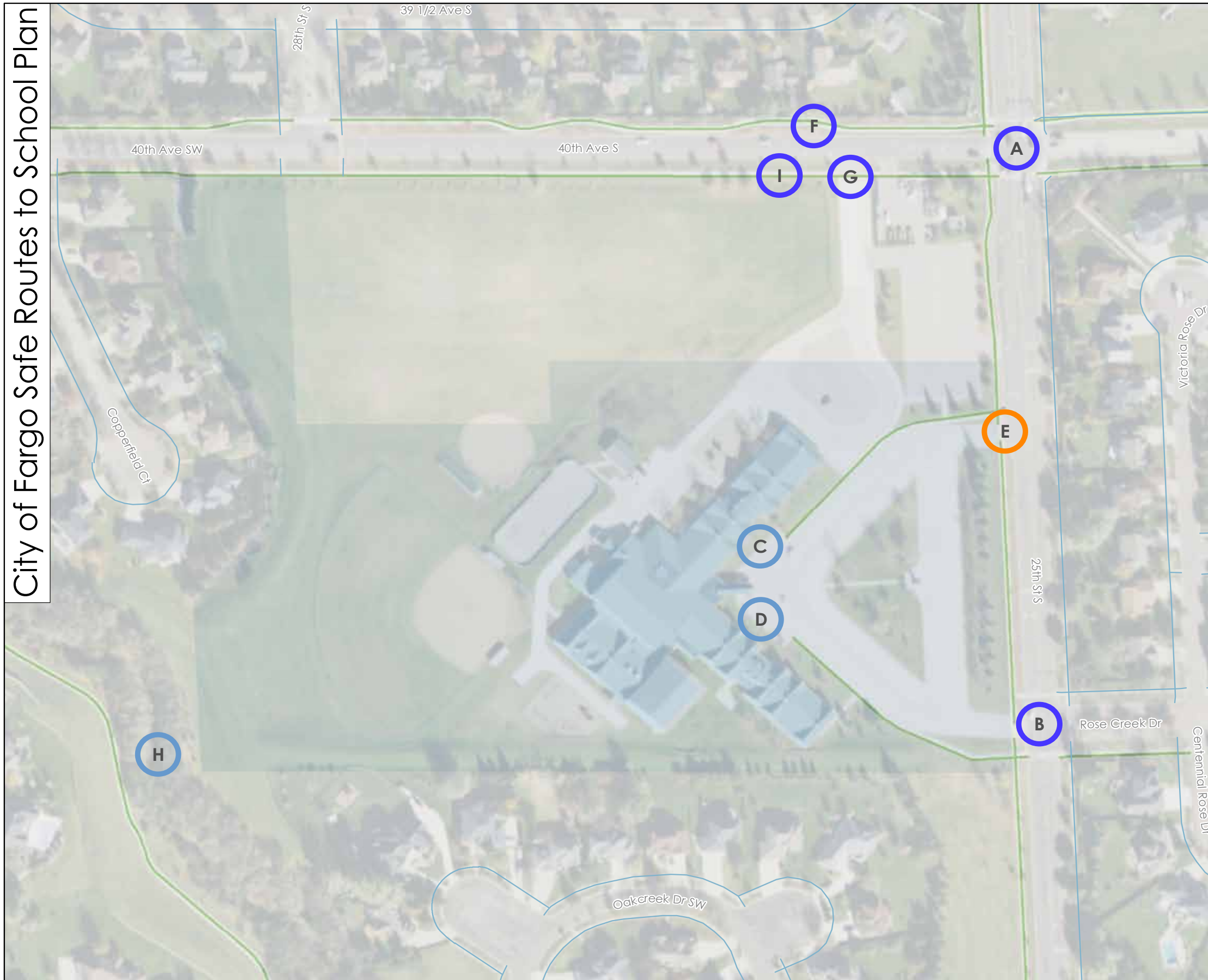
†On-Street bike facilities include bike lanes, separated bike lanes, shared lane markings, signed bike routes, and shoulders greater than 4

Opportunities for improvement

Since both 40th Avenue S and 25th Street S are minor arterial roadways and present barriers for safe and comfortable walking and biking to school, the majority of the opportunities for improvement relate to these two streets. At the intersections of 40th Avenue S and 25th Street S and 25th Street S and Rose Creek Drive, there is an opportunity to utilize the existing traffic signals to incorporate leading pedestrian intervals (LPI), which can increase the visibility of people walking through this intersection and improve driver yielding rates. Installing a NO RIGHT TURN ON RED sign at 25th Street S and Rose Creek Drive is recommended in combination with the installation of the LPI. Other opportunities for improvement include providing consistency with the application of school speed zones, including posting signs on both sides of the street and including flashing lights indicating when the school speed zone is in effect. Where possible, lanes should be reduced along 25th Street S to reduce multiple-threat collision opportunities.


On campus, there are opportunities to improve connections from the sidewalk to the school entrance, including marking high-visibility crosswalks at the school driveways.

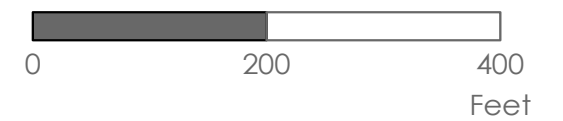
CENTENNIAL ELEMENTARY OPPORTUNITIES FOR IMPROVEMENT			
LOCATION	POTENTIAL SOLUTION	LEAD AGENCY	IMPACT
A 40th Ave S / 25th St S	Install leading pedestrian interval; reduce lane widths on 40th Ave S; replace damaged truncated domes (SW quadrant)	City of Fargo	High
B Rose Creek Dr / 25th St S	Install no right turn on red during school hours; install leading pedestrian interval; replace faded crosswalk markings	City of Fargo	High
C Front of school	Install bike parking to provide two points of contact with bicycle frame (e.g., Inverted U or Post and Ring style rack); consider installing additional capacity	Fargo Public Schools	Low
D Front of school	Install bike parking to provide two points of contact with bicycle frame (e.g., Inverted U or Post and Ring style rack); consider installing additional capacity	Fargo Public Schools	Low
E 25th St S at entrance driveway	Install high visibility crosswalk across driveway; eliminate southbound right turn from middle lane to remove multiple threat crash opportunity and reduce crossing distance of driveway	City of Fargo; Fargo Public Schools	Medium
F 40th Ave S between 25th and 28th St S	Install flashing lights to provide indication to motorists of when the school speed limit is active (make consistent with other signs near the school)	City of Fargo	High
G 40th Ave S / bus loop entrance	Install high visibility crosswalk across driveway to connect to sidewalk on the east side of the driveway	City of Fargo; Fargo Public Schools	High
H West of school	Consider bridge connection from school campus to Timberline Park and residential area to the west	City of Fargo; Fargo Public Schools	Low
I 40th Ave S between 25th and 28th St S	Install school zone sign with lights to alert motorists that they are in school speed zone	City of Fargo	High



Infrastructure Opportunities

Centennial Elementary

-  Opportunities for Improvement Locations
-  High Impact
-  Medium Impact
-  Low Impact
-  Opportunities for Improvement Segments
-  High Impact
-  Medium Impact
-  Low Impact
-  Shared Use Path
-  Sidewalk
-  Building footprint
-  School grounds



METROCOG

