



Clara Barton Elementary

1417 6th St S, Fargo, ND 58103

DISTRICT

Fargo Public School
District #1

GRADES

3-5

AVERAGE ENROLLMENT

400 (with Hawthorne)

ARRIVAL

8:10 a.m.

DISMISSAL

2:32 p.m.

Existing Conditions

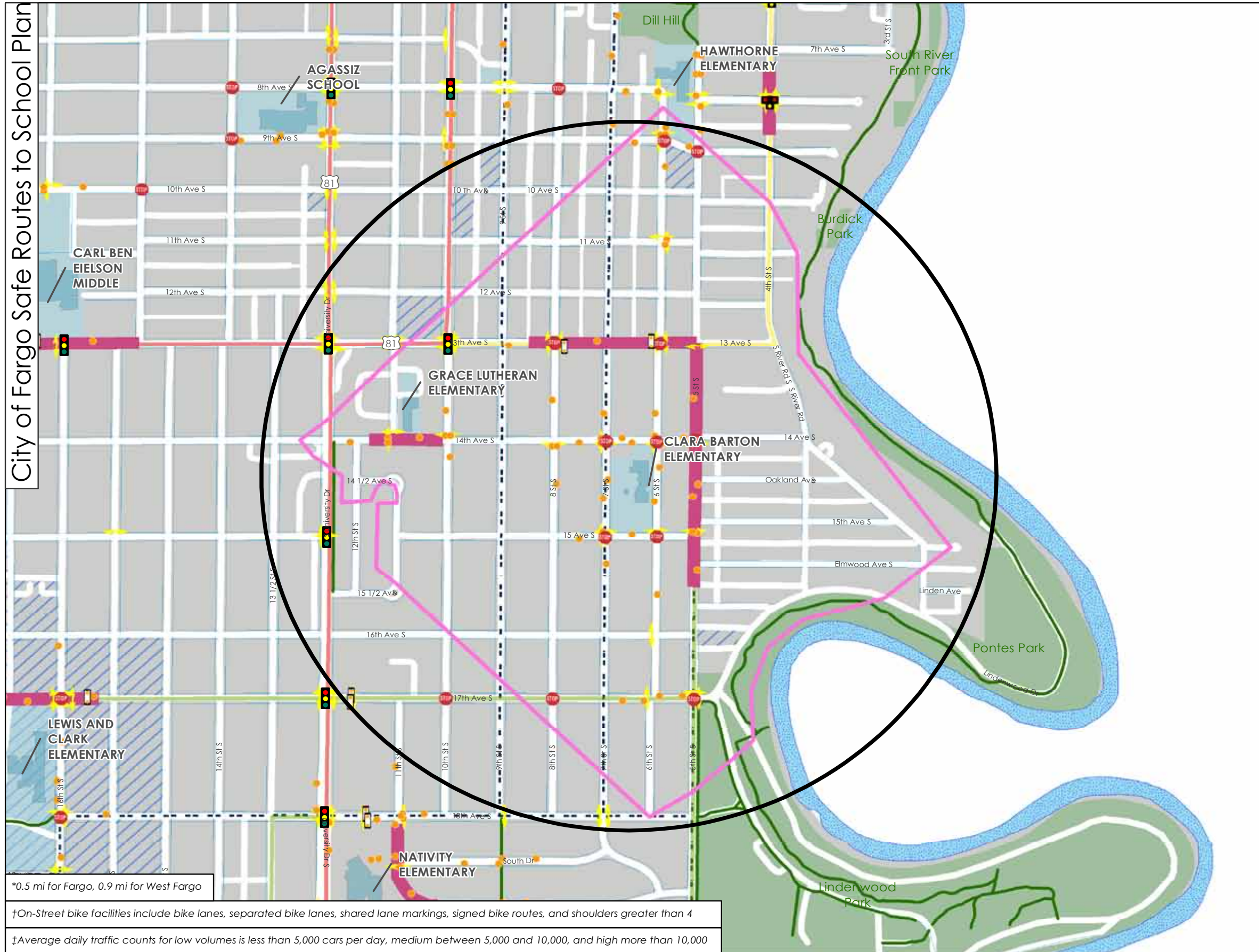
Clara Barton Elementary is a 3rd through 5th grade school in the Fargo Public School District. It is located approximately 1.5 miles south of Downtown Fargo in the city's Clara Barton Neighborhood. The neighborhood consists primarily of residential single-family homes. Within the Clara Barton boundaries, per capita income is slightly higher than the district average, but median household income is slightly less. Nearly one-quarter of Clara Barton's students are eligible for free and reduced lunch programs. Less than one percent of students participate in English Language Learners programs.

The Clara Barton school facility was constructed in 1927. In 2003, Clara Barton Elementary and Hawthorne Elementary schools were joined together with kindergarten through grade 2 housed at the Hawthorne campus, while grades 3 through 5 attend Clara Barton Elementary. Prior to 2003, both schools included kindergarten through 5th grade.

The Clara Barton campus is bound by 7th Street S to the west, 14th Avenue S to the north, 6th Street S to the east, and 15th Avenue S to the south. The roads surrounding the building consist of local roads with low traffic volumes. There are sidewalks on both sides of the roadway throughout most of the walk zone. Many parents drop their students off on the east side of 6th Street S, which creates visibility challenges for students crossing the street.



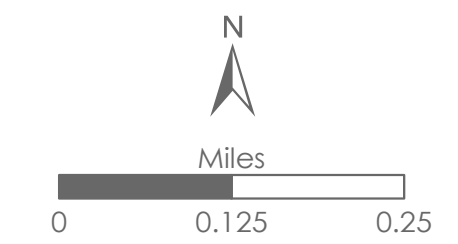
▲ Many intersections along 6th Street S are very wide. The 17th Avenue S and 6th Street S intersection is offset and skewed.



Existing Conditions Clara Barton Elementary

- School Study Areas*
 - Walk Zones
 - Building Footprints
 - School Grounds
 - Park
 - Environmental Justice Areas
 - School Speed Zone
 - Shared Use Path
 - On-Street Bike Facility†
 - Sidewalk
 - Crosswalk
 - Pedestrian Crossing Sign
 - 4-Way Stop Sign
 - HAWK Signal
 - Other Flashing Sign
 - Signalized Intersection
- Traffic Volumes‡**
- Low
 - Medium
 - High

*Clara Barton serves grades 3-5



*0.5 mi for Fargo, 0.9 mi for West Fargo

†On-Street bike facilities include bike lanes, separated bike lanes, shared lane markings, signed bike routes, and shoulders greater than 4

‡Average daily traffic counts for low volumes is less than 5,000 cars per day, medium between 5,000 and 10,000, and high more than 10,000



Circulation Challenges

The Clara Barton neighborhood is highly walkable and few significant barriers were identified for safe bicycle and pedestrian access to the school. The existing major corridors, like 5th Street S and 13th Avenue S have adequate infrastructure in place, including school speed zones, flashing beacons, and pedestrian crossing signs.

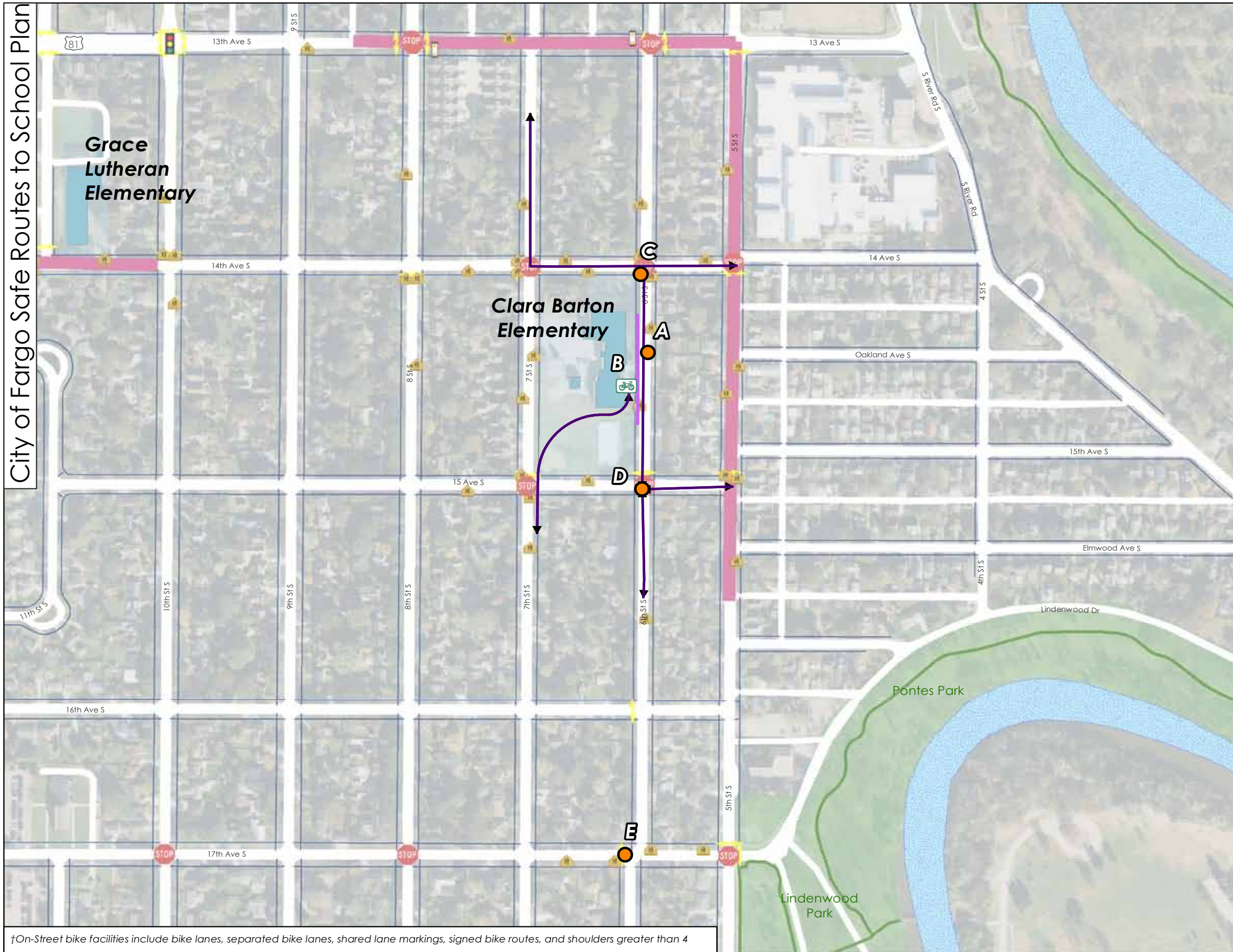
The 6th Street S corridor is a primary north-south circulation route around Clara Barton Elementary and was the location for many of the identified barriers. Along this route, there are many opportunities to improve the biking and walking environment and safety.

Parents dropping students off on the east side of 6th Street S create congestion. Students cross midblock across vehicle travel lanes without any pedestrian facilities. This creates potential safety challenges.

Many intersections along 6th Street S are very wide, which is uncomfortable for students to cross. The intersections at 14th Avenue S and 15th Avenue S are missing crosswalk markings. The intersection with 17th Avenue S is offset resulting in a skewed crosswalk, further increasing the crossing distance for bicyclists and pedestrians.

CLARA BARTON ELEMENTARY CHALLENGES

LOCATION	CHALLENGE
A 6th St S midblock	Parents dropping on east side of 6th Street S Students must cross midblock across vehicle and bus travel lanes
B East entrance	Comb style rack does not allow locking of frame and can lead to wheel damage Highly utilized bike parking nearing capacity
C 14th Ave S / 6th St S	Long crossing distances Inconsistent crosswalk markings
D 15th Ave S / 6th St S	Long crossing distances Inconsistent crosswalk markings
E 17th Ave S / 6th St S	Offset crossing and skewed intersection



†On-Street bike facilities include bike lanes, separated bike lanes, shared lane markings, signed bike routes, and shoulders greater than 4

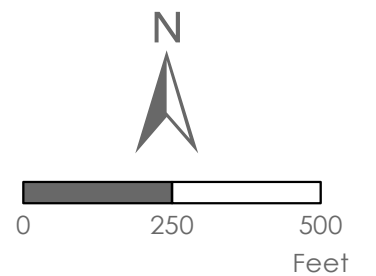
Observed Circulation & Challenges Clara Barton Elementary

Key*

- Bus Circulation
- Challenge
- Shared Bus and Vehicle Lane
- Vehicle Drop-off and Pick-up
- Observed Walking and Biking Routes
- Bike Rack
- Challenge

Existing Infrastructure*

- Building Footprints
- School Grounds
- School Speed Zones
- On-Street Bike Facility†
- Sidewalk
- Shared Use Path
- Crosswalk Marking
- Signalized Intersection
- HAWK Signal
- Other Flashing Sign
- Pedestrian Crossing Sign
- 4-Way Stop Sign

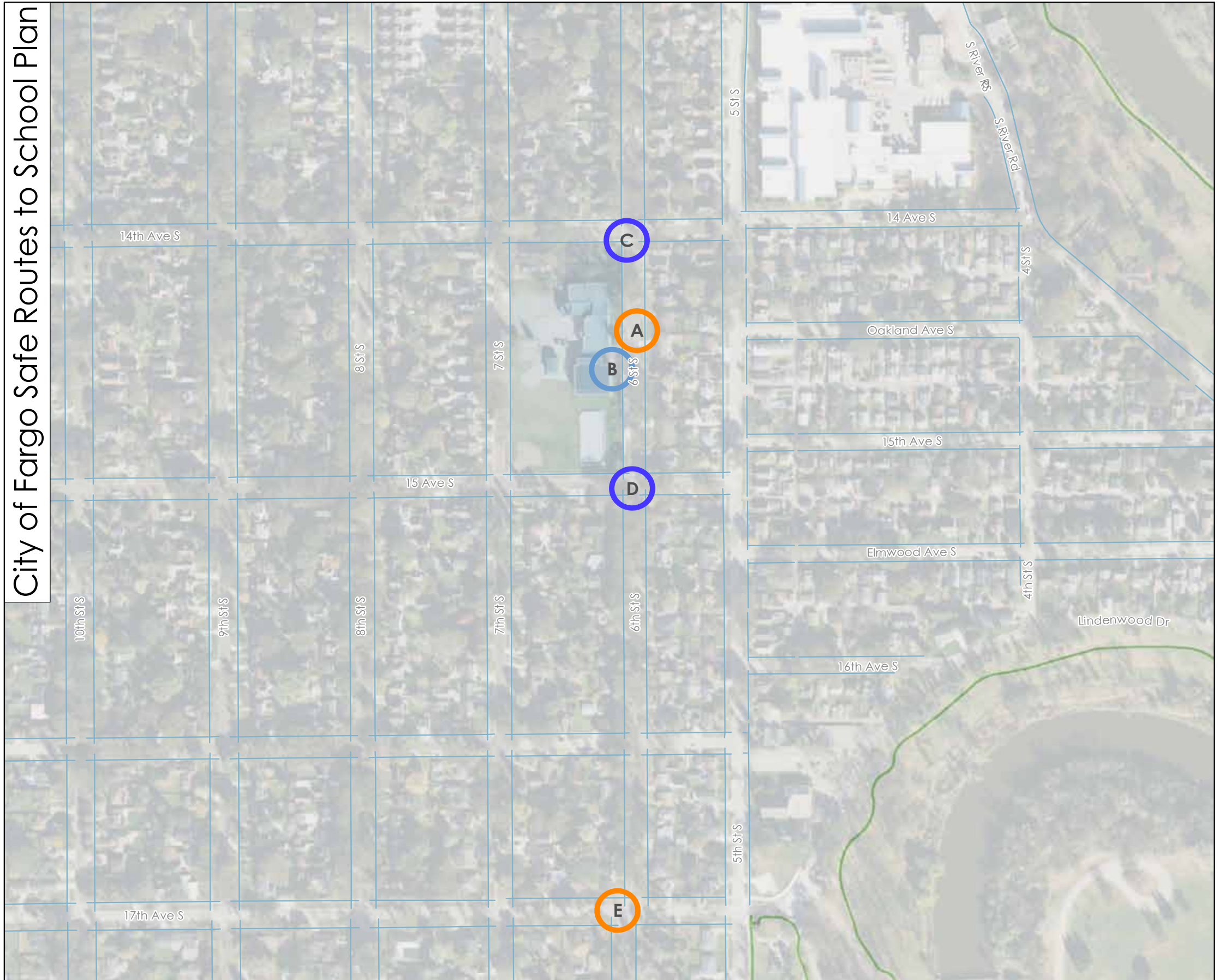


*Legend Common to All Maps - Not all Features Present on All Maps




Opportunities for Improvement

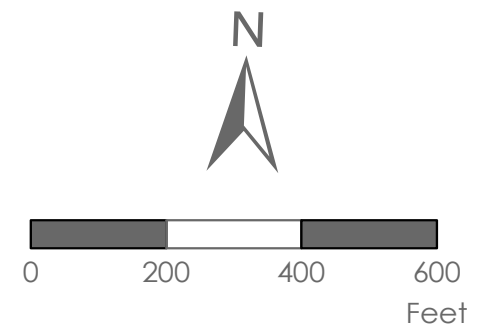
Because Clara Barton Elementary is joined with Hawthorne Elementary and students are split by grades between the two campuses, enhancing the walking and biking connections to Hawthorne to the north should be considered and prioritized. At 14th Avenue S and 6th Street S, curb extensions and high visibility crosswalks would improve visibility and create a gateway to the main entrance of school (along with a similar treatment a block to the south at 15th Avenue S). In addition, a raised crosswalk midblock on 6th Street S would calm traffic traveling past the school and provide a more visible crossing for students being dropped off at the main entrance on 6th Street S.

CLARA BARTON ELEMENTARY OPPORTUNITIES FOR IMPROVEMENT			
LOCATION	POTENTIAL SOLUTION	LEAD AGENCY	IMPACT
A 6th St S midblock	Install raised crosswalk	City of Fargo	Medium
B East entrance	Install bike parking to provide two points of contact with bicycle frame (e.g., Inverted U or Post and Ring style rack); consider installing additional capacity	Fargo Public Schools	Low
C 14th Ave S / 6th St S	Consider curb extensions on west and south crossings of intersection; install high visibility crosswalks; install forward stop bars	City of Fargo	High
D 15th Ave S / 6th St S	Consider curb extensions on west and north crossings of intersection; install high visibility crosswalks; install forward stop bars	City of Fargo	High
E 17th Ave S / 6th St S	Consider curb extensions on west crossing of intersection; install high visibility crosswalks; install forward stop bars	City of Fargo	Medium

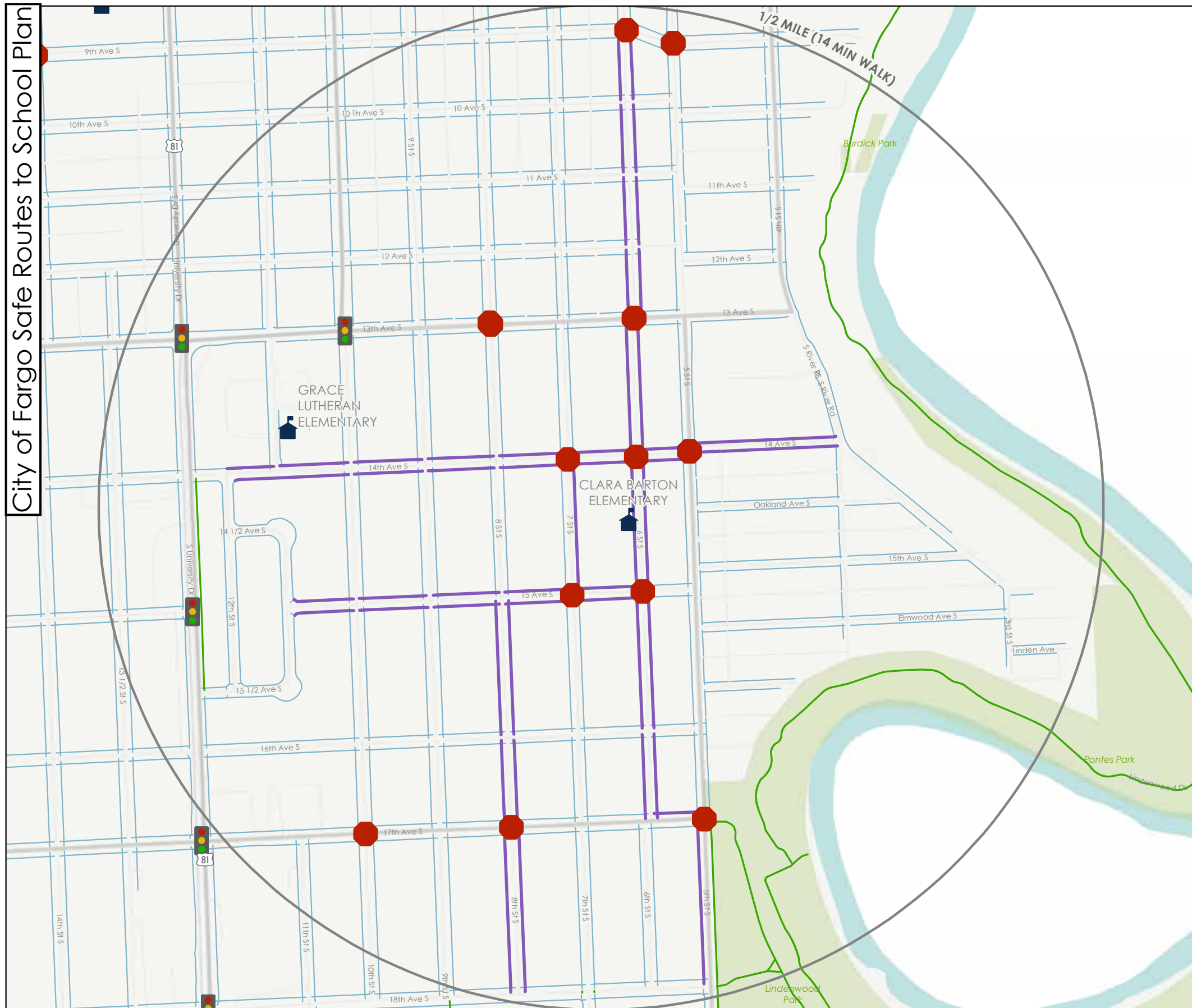


Infrastructure Opportunities
Clara Barton Elementary







-  Opportunities for Improvement Locations
-  High Impact
-  Medium Impact
-  Low Impact
-  Opportunities for Improvement Segments
-  High Impact
-  Medium Impact
-  Low Impact
-  Shared Use Path
-  Sidewalk
-  Building footprint
-  School grounds



City of Fargo Safe Routes to School Plan



Suggested Routes to School
Clara Barton Elementary

-  Suggested routes
-  Sidewalks
-  Shared Use Path
-  All-way stops
-  Traffic signal
-  Pedestrian crossing signal

