



Bennett Elementary

2000 58th Avenue S, Fargo, ND 58104

DISTRICT

Fargo Public School
District #1

GRADES

K-5

AVERAGE ENROLLMENT

536

ARRIVAL

8:20 a.m.

DISMISSAL

2:42 p.m.

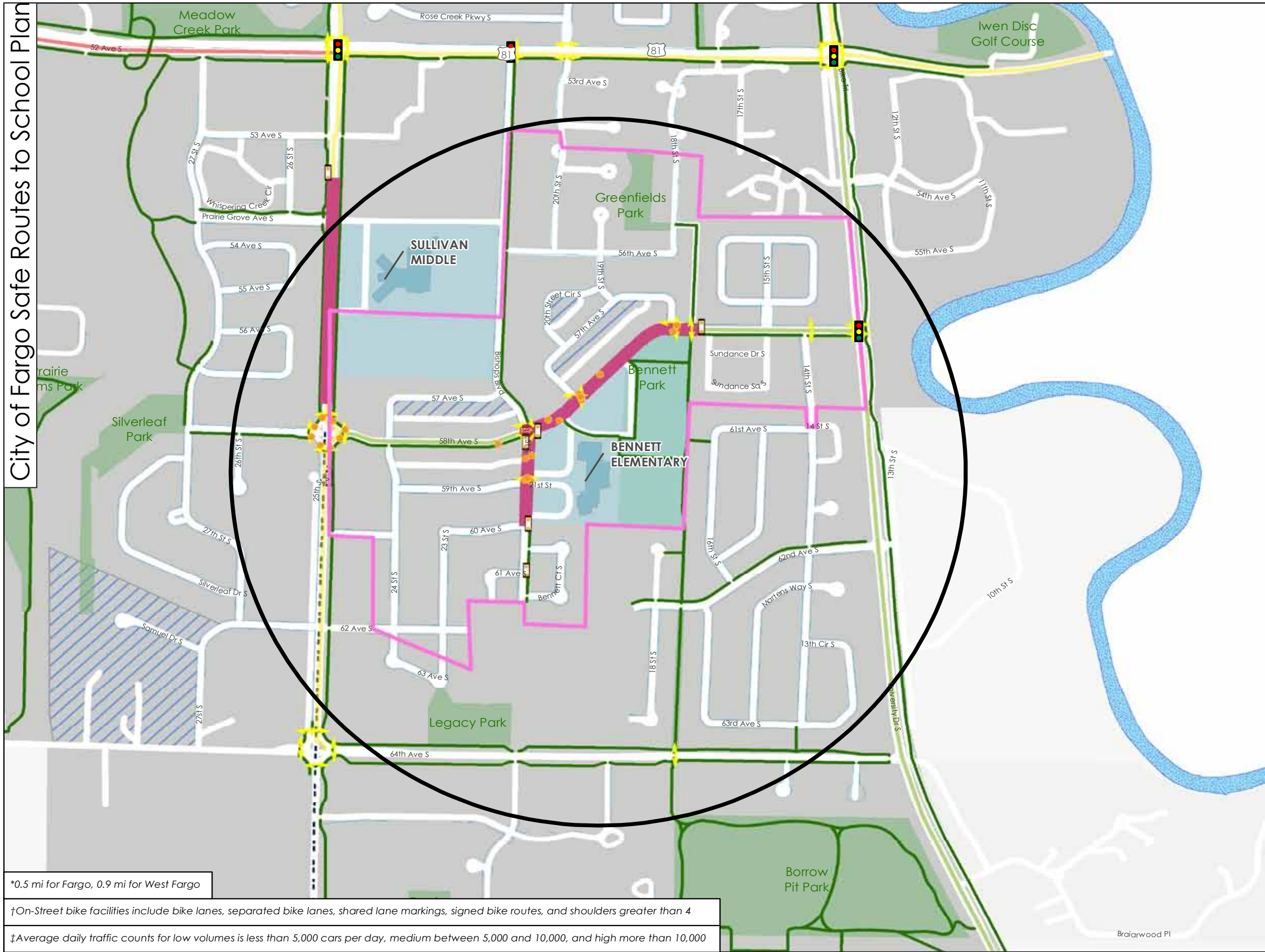
Existing Conditions

Bennett Elementary is a kindergarten through 5th grade school in the Fargo Public School District. It is located approximately six miles south of Downtown Fargo in the city's Bennett neighborhood. The neighborhood consists primarily of residential single-family homes. Within the Bennett boundaries, per capita income and household income are much higher than the district average. Seventeen percent of Bennett students are eligible for free and reduced lunch programs. Around three percent of students participate in English Language Learners programs.

The Bennett school facility was constructed in 2000. The campus is bound by 21st Street S to the west, 58th Avenue S to the north, approximately 16th Street S and Sundance Square S to the east, and 60th Avenue S to the south. The surrounding roads are generally low traffic roadways serving the residential developments. However, some speeding was observed during the field review. School speed zones are designated along 58th Avenue S from Bishops Boulevard / 21st Street S to east of Bennett Park, and along 21st Street S from 58th Avenue S to 60th Avenue S. Within the walk zone, there are some sidewalk gaps, mostly associated with undeveloped parcels.



- ▲ Along 58th Avenue, speed is observed to be an issue. There are many unprotected crosswalks along this segment.



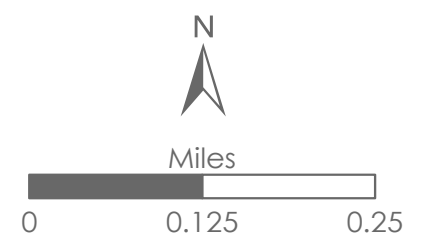
*0.5 mi for Fargo, 0.9 mi for West Fargo

†On-Street bike facilities include bike lanes, separated bike lanes, shared lane markings, signed bike routes, and shoulders greater than 4

‡Average daily traffic counts for low volumes is less than 5,000 cars per day, medium between 5,000 and 10,000, and high more than 10,000

Existing Conditions Bennett Elementary

- School Study Areas*
 - Walk Zones
 - Building Footprints
 - School Grounds
 - Park
 - Environmental Justice Areas
 - School Speed Zone
 - Shared Use Path
 - On-Street Bike Facility†
 - Sidewalk
 - Crosswalk
 - Pedestrian Crossing Sign
 - 4-Way Stop Sign
 - HAWK Signal
 - Other Flashing Sign
 - Signalized Intersection
- Traffic Volumes‡**
- Low
 - Medium
 - High



Circulation Challenges

58th Avenue S, north of the campus, is perceived by caregivers as a barrier to walking and biking. There are sidewalk gaps, observed high speed traffic, and poor yielding compliance. The field review indicated the intersection with 20th Street S has low pedestrian visibility. Drivers along the corridor do not expect to see pedestrians crossing at this location.

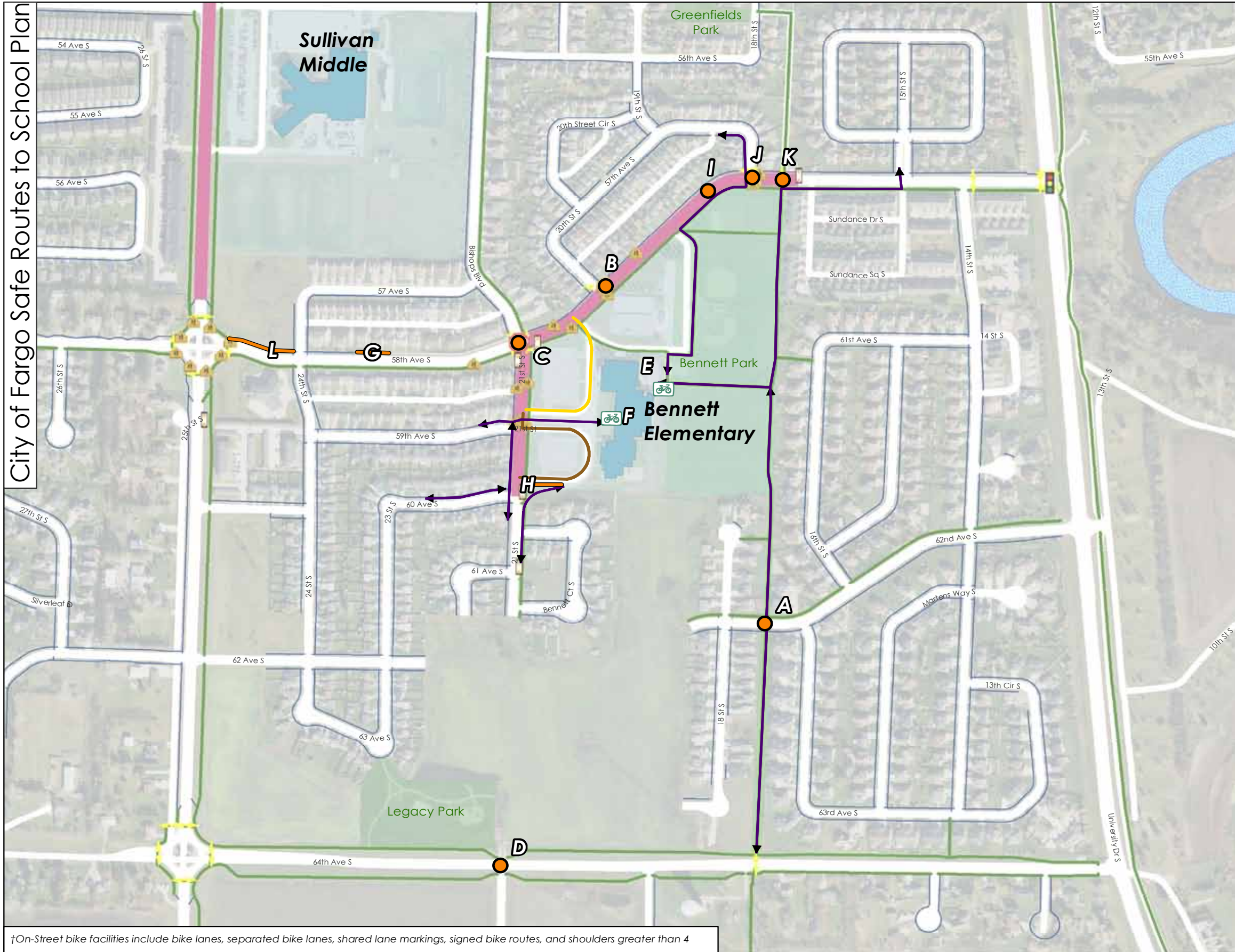
64th Avenue S is outside of the school's current walk zone but was identified as a potential barrier due to the wide lanes and observed high speed traffic.

The shared use path along the eastern edge of the property is a primary north-south circulation route for students walking and biking to school. This trail crosses 58th Avenue S and 62nd Avenue S. There is a flashing beacon at the 58th Avenue S crossing and a bicycle crossing sign at the 62nd Avenue S crossing. During the field review, it was observed that drivers were not anticipating trail users to cross at these locations.

On the west side of the property, incomplete sidewalk networks encourage students to cut across the green space to get to the building.

BENNETT ELEMENTARY CHALLENGES

LOCATION	CHALLENGE
A 62nd Ave S / trail east of 18th St S	Drivers not expecting trail users to cross
B 58th Ave S / 20th St S	Poor driving yielding and stopping compliance Pedestrian visibility is low
C 58th Ave S / 21st St S	Long crossing distances
D 64th Ave S / 21st St S	Wide roadway planned to connect Bennett to future development
E Back of school	Comb style rack does not allow locking of frame and can lead to wheel damage
F Front of school	Comb style rack does not allow locking of frame and can lead to wheel damage
G 58th Ave S between 24th St S and Bishops Blvd	No sidewalk or space for people walking
H Front of school	No sidewalk along shortest path of travel Students cut across green space as shortcut
I 58th Ave S west of 18th St S	Vehicle speeds observed to be high around curve in road
J 58th Ave S / 18th St S	Long crossing distances
K 58th Ave S / trail crossing	Drivers not expecting trail users to cross
L 58th Ave S between 24th St S and 25th St S	No sidewalk or space for people walking



†On-Street bike facilities include bike lanes, separated bike lanes, shared lane markings, signed bike routes, and shoulders greater than 4

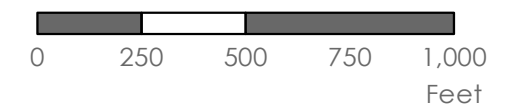
Observed Circulation & Challenges Bennett Elementary

Key*

- Bus Circulation
- Challenge
- Shared Bus and Vehicle Lane
- Vehicle Drop-off and Pick-up
- Observed Walking and Biking Routes
- Bike Rack
- Challenge

Existing Infrastructure*

- Building Footprints
- School Grounds
- School Speed Zones
- On-Street Bike Facility†
- Sidewalk
- Shared Use Path
- Crosswalk Marking
- Signalized Intersection
- HAWK Signal
- Other Flashing Sign
- Pedestrian Crossing Sign
- 4-Way Stop Sign



METROCOG

*Legend Common to All Maps -
Not all Features Present on All Maps

Opportunities for improvement

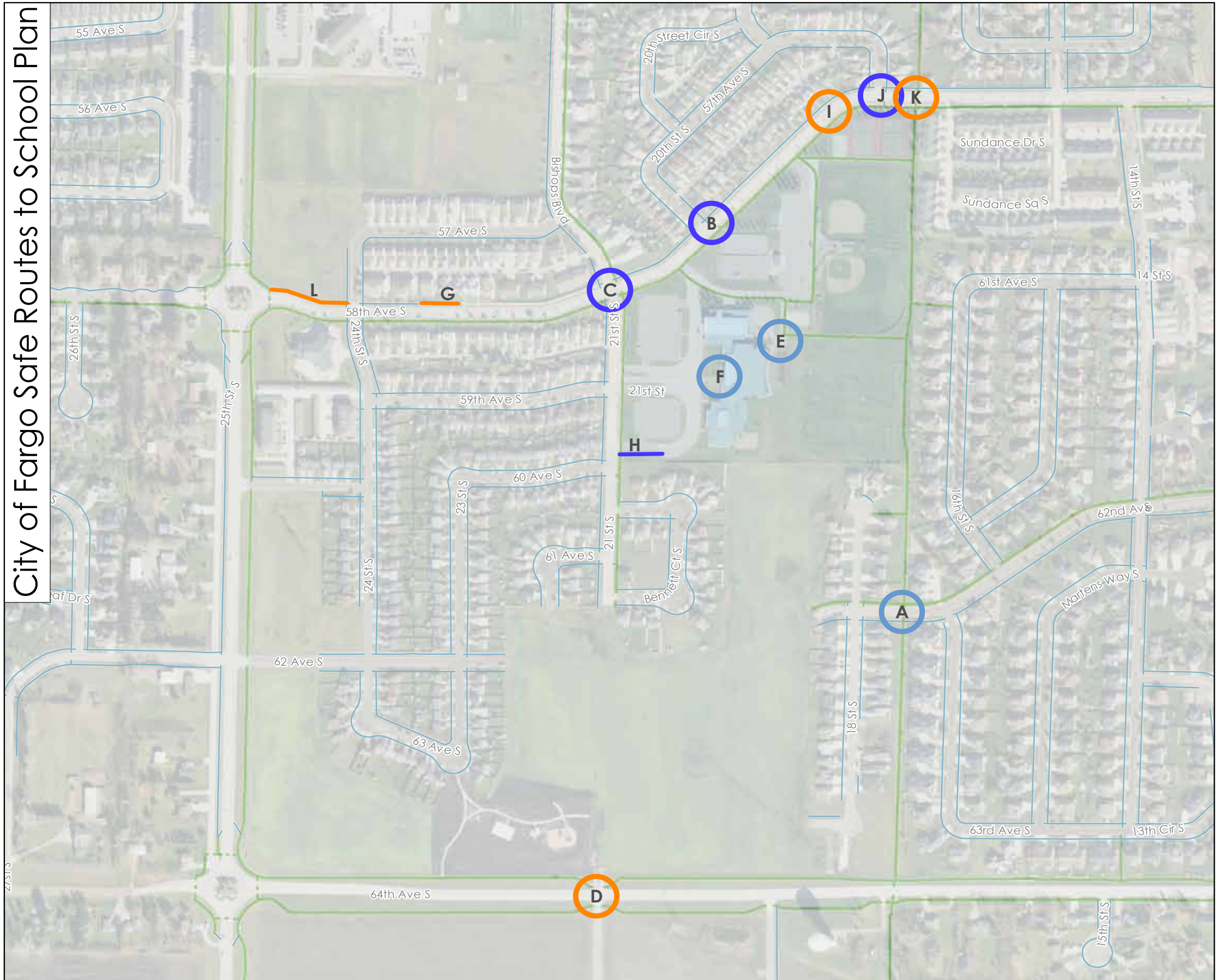
Due to the identified challenges crossing 58th Avenue S, high impact opportunities for improvement were focused along and across this street in order to make crossings more comfortable for students and families walking to Bennett Elementary. By improving visibility, shortening crossing distances and making it clearer and more obvious where drivers should expect to see people crossing, challenges will likely decrease along 58th Avenue S.

As this area of Fargo grows to the south of school, it will be important to provide comfortable and low stress connections for students and families. In particular, the crossing of 64th Avenue S at 21st Street S should be considered for improvement as more families begin living south of school.






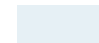
Sidewalks should be installed to connect the existing sidewalk on campus to 21st Street S because many students use and will use 21st Street S to access school.

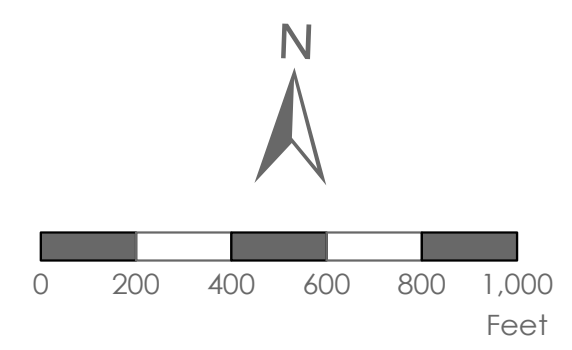
BENNETT ELEMENTARY OPPORTUNITIES FOR IMPROVEMENT

LOCATION	POTENTIAL SOLUTION	LEAD AGENCY	IMPACT
A 62nd Ave S / trail crossing	Install high visibility crosswalk; consider installing curb extensions and/or raised crosswalk	City of Fargo	Low
B 58th Ave S / 20th St S	Straighten crossing and extend median safety island; install RRFB	City of Fargo	High
C 58th Ave S / 21st St S	Evaluate the need for left turn lanes; install curb extensions	City of Fargo	High
D 64th Ave S / 21st St S	Provide enhanced pedestrian and bicycle crossing of 64th Ave S with future development	City of Fargo	Medium
E Back of school	Install bike parking to provide two points of contact with bicycle frame (e.g., Inverted U or Post and Ring style rack)	Fargo Public Schools	Low
F Front of school	Install bike parking to provide two points of contact with bicycle frame (e.g., Inverted U or Post and Ring style rack)	Fargo Public Schools	Low
G 58th Ave S between 24th St S and Bishops Blvd	Install sidewalk to fill gap	City of Fargo	Medium
H Front of school	Install sidewalk from 21st along south side of driveway	Fargo Public Schools	High
I 58th Ave S west of 18th St S	Evaluate the need for left turn lane; consider extending median from Location J to this point	City of Fargo	Medium
J 58th Ave S / 18th St S	Install traffic calming including median safety island	City of Fargo	High
K 58th Ave S / trail crossing	Install RRFB; install traffic calming including median safety island	City of Fargo	Medium
L 58th Ave S between 24th St S and 25th St S	Install sidewalk to fill gap	City of Fargo	Medium

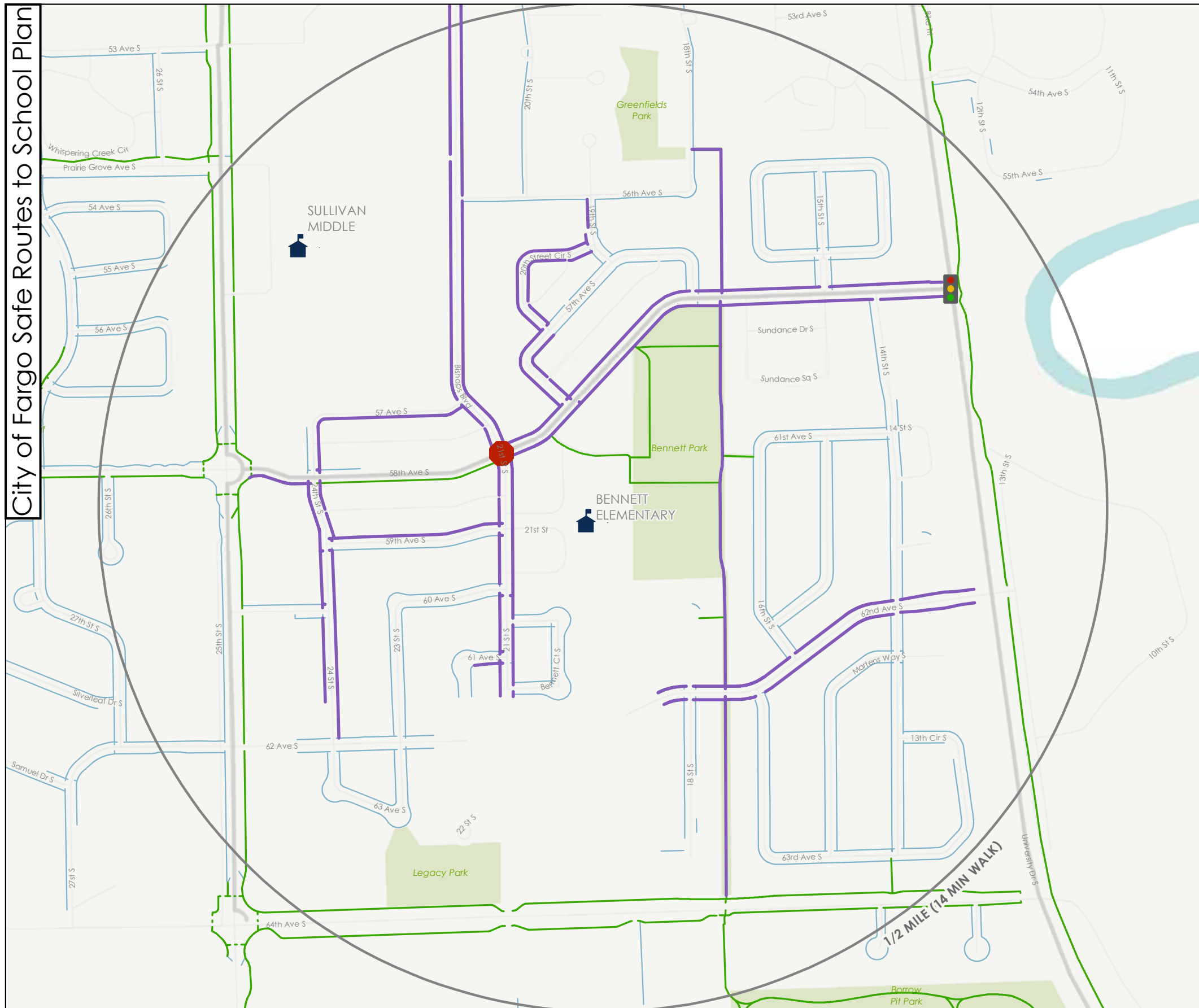


Infrastructure Opportunities Bennett Elementary







-  Opportunities for Improvement Locations
-  High Impact
-  Medium Impact
-  Low Impact
-  Opportunities for Improvement Segments
-  High Impact
-  Medium Impact
-  Low Impact
-  Shared Use Path
-  Sidewalk
-  Building footprint
-  School grounds



City of Fargo Safe Routes to School Plan



Suggested Routes to School
Bennett Elementary

-  Suggested routes
-  Sidewalks
-  Shared Use Path
-  All-way stops
-  Traffic signal
-  Pedestrian crossing signal

