



# Osgood Elementary

5550 44th Avenue S, Fargo, ND 58104

## DISTRICT

---

West Fargo Public School District #6

## GRADES

---

K-5

## AVERAGE ENROLLMENT

---

413

## ARRIVAL

---

8:00 a.m.

## DISMISSAL

---

2:40 p.m.

### Existing Conditions

Osgood Elementary is a kindergarten through 5th grade school in the West Fargo Public School District. The school is located approximately 4 miles south of downtown West Fargo. Approximately 31 percent of Osgood Elementary students qualify for free and reduced meals and 7.4 percent are English language learners.

The school was constructed in 2009 and since then has gone through additions in 2012 and 2013. The school is bound by Veterans Boulevard to the west, 44th Avenue S to the north, and Osgood School Park to the south and east. Surrounding land uses are primarily medium to lower density residential. Sheyenne High School is located approximately a quarter mile north of Osgood Elementary.

Veterans Boulevard is a high traffic volume roadway that is uncomfortable to cross, but has adequate infrastructure in place for safe walking parallel to it.

Shared use paths exist along Veterans Boulevard, 44th Avenue S, and through Osgood School Park. Most surrounding residential streets have sidewalks on both sides of the street. However, sidewalks are missing in the developments east of 53rd Street S.

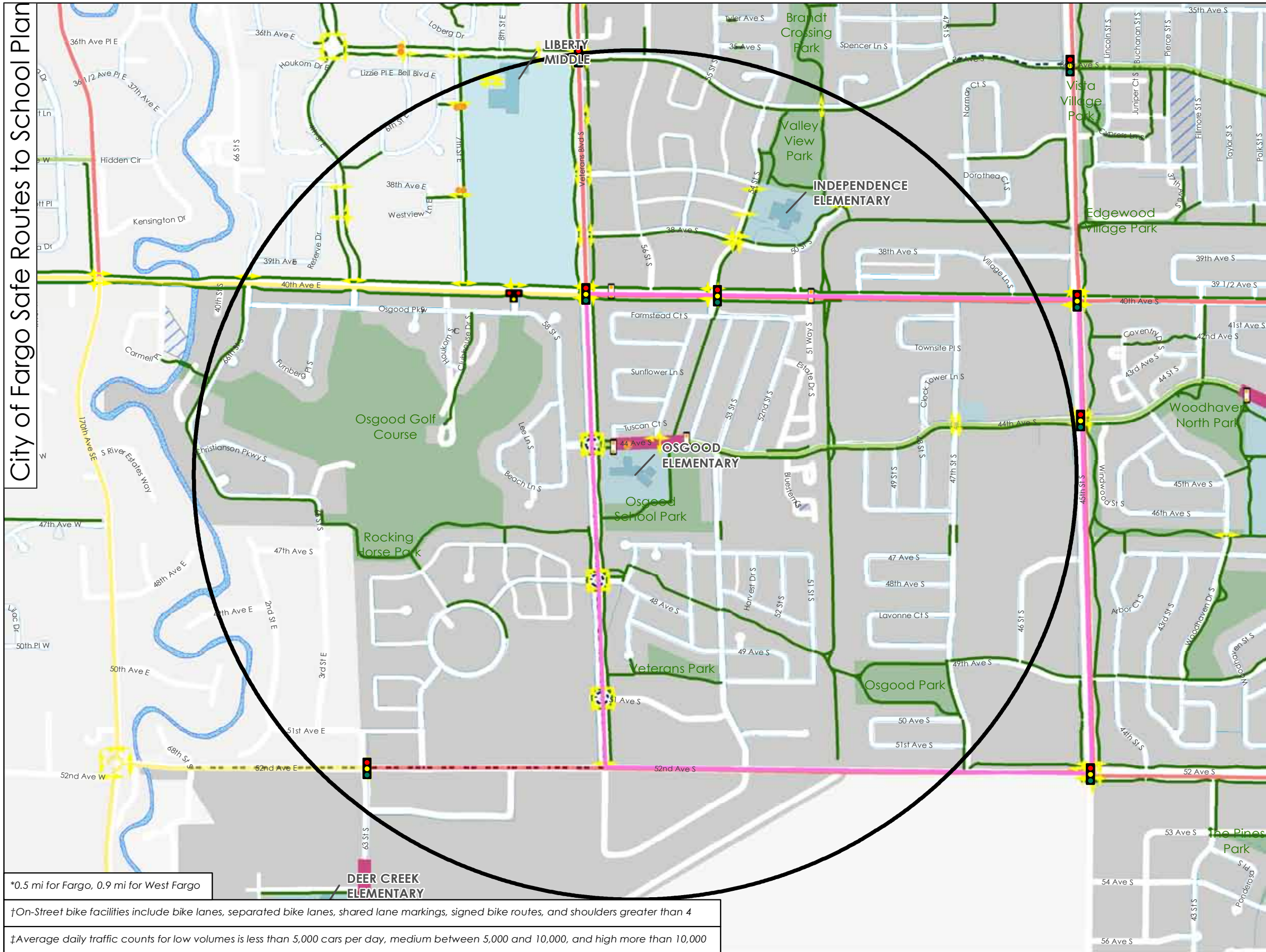


▲ There is a lack of pedestrian space around the school building and parking lots.



▲ There is limited visibility of people crossing at the 44th Avenue S and 55th Street S intersection, especially during the winter.





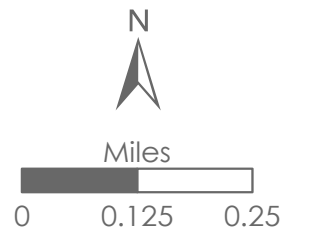
\*0.5 mi for Fargo, 0.9 mi for West Fargo

†On-Street bike facilities include bike lanes, separated bike lanes, shared lane markings, signed bike routes, and shoulders greater than 4

‡Average daily traffic counts for low volumes is less than 5,000 cars per day, medium between 5,000 and 10,000, and high more than 10,000

### Existing Conditions Osgood Elementary

- School Study Areas\*
  - Walk Zones
  - Building Footprints
  - School Grounds
  - Park
  - Environmental Justice Areas
  - School Speed Zone
  - Shared Use Path
  - On-Street Bike Facility†
  - Sidewalk
  - Crosswalk
  - Pedestrian Crossing Sign
  - 4-Way Stop Sign
  - HAWK Signal
  - Other Flashing Sign
  - Signalized Intersection
- Traffic Volumes‡**
- Low
  - Medium
  - High



## Circulation Challenges

Osgood Elementary is located in a suburban style development with limited connectivity across housing developments. There are multiple sidewalk gaps surrounding the Osgood Elementary campus, specifically connecting existing sidewalks around the school building and to trails on the property's perimeter. There is no pedestrian circulation route along the south parking lot connecting to Veterans Boulevard, or along the north parking lot around the school.

44th Avenue S is the primary east-west circulation route for students walking and biking to school. There is limited visibility of crossing pedestrians at the 55th Street S intersection, especially in the winter.

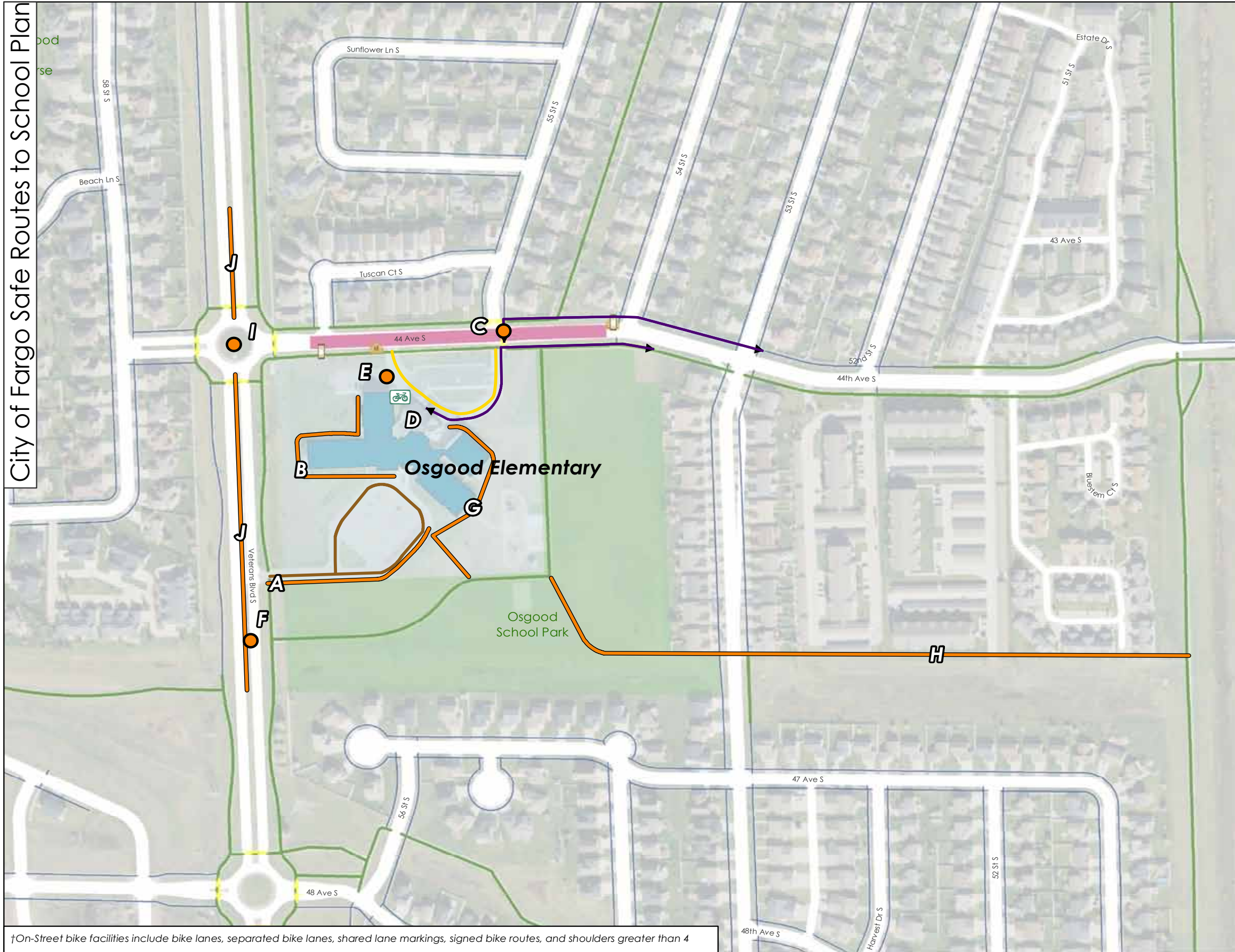
Veterans Boulevard is a major barrier for students walking and biking to school. It is a high traffic volume corridor, with observed high-speed traffic and many observed distracted drivers at the round-a-bout at 44th Avenue S. The south school access does not include protected pedestrian crossing infrastructure. The driveway is wide with large curb radii that encourages high speed turns in to and out of the parking lot.

A school speed zone exists on 44th Avenue S along the school property. However, no school speed zone is installed on any portion of Veterans Boulevard along Osgood.

### OSGOOD ELEMENTARY CHALLENGES

LOCATION	CHALLENGE
<b>A</b> South parking lot entrance	No pedestrian space along driveway to Veterans Blvd
<b>B</b> West side of school	No pedestrian space around school
<b>C</b> 44th Ave S / 55th St S	Limited visibility of people crossing, especially in the winter
<b>D</b> North side of school	Comb style rack does not allow locking of frame and can lead to wheel damage
<b>E</b> North parking lot	Conflict between parking lot entrance/exit and sidewalk
<b>F</b> Veterans Blvd / trail crossing south of school	Long crossing distances ..... No crosswalk marking ..... Observed high traffic volumes
<b>G</b> East side of school	No pedestrian space around the school connecting doors to playground
<b>H</b> Green space / park to the south east of school to trail along drain	No pedestrian space connecting school to adjacent neighborhoods
<b>I</b> Veterans Blvd / 44th Ave S roundabout	Distracted drivers with low yield behavior
<b>J</b> Veterans Blvd adjacent to school and north of 44th Ave S	No school speed zone





†On-Street bike facilities include bike lanes, separated bike lanes, shared lane markings, signed bike routes, and shoulders greater than 4

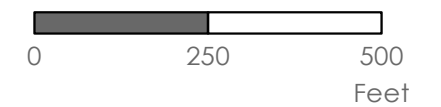
## Observed Circulation & Challenges Osgood Elementary

### Key\*

- Bus Circulation
- Challenge
- Shared Bus and Vehicle Lane
- Vehicle Drop-off and Pick-up
- Observed Walking and Biking Routes
- Bike Rack
- Challenge

### Existing Infrastructure\*

- Building Footprints
- School Grounds
- School Speed Zones
- On-Street Bike Facility†
- Sidewalk
- Shared Use Path
- Crosswalk Marking
- Signalized Intersection
- HAWK Signal
- Other Flashing Sign
- Pedestrian Crossing Sign
- 4-Way Stop Sign



**METROCOG**

\*Legend Common to All Maps -  
Not all Features Present on All Maps

### Opportunities for Improvement

With no pedestrian space existing to connect students and families from Veterans Boulevard to the school, installing a sidewalk or shared use path along the entrance loop should be a high impact. Students were also observed walking to the southeast of school through the open field. Installing a shared use path or sidewalk here would connect these neighborhoods to Osgood.

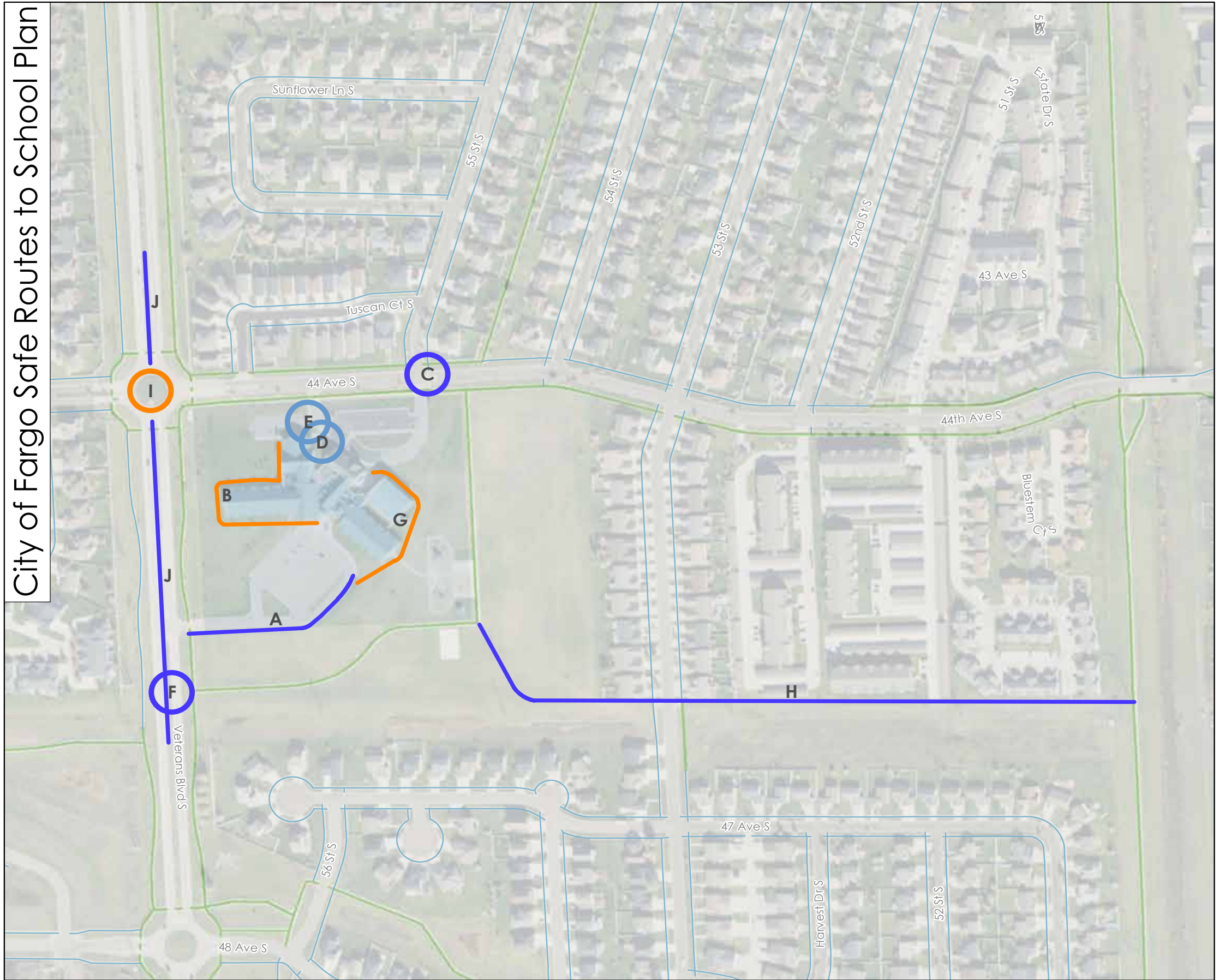
Off campus, a median safety island and RRFB exists at the crossing at 55th Street S and 44th Avenue S. However, families mentioned that students are difficult to see in the dark and when snow is stored at the crossing.

On Veterans Boulevard, improvements should be made where the existing shared use path intersects south of campus. Shortening the crossing distance and using the existing median would provide students and families with a more comfortable crossing of this high traffic volume street. In addition, installing flashing school speed zone signs on Veterans Boulevard would help bring awareness to the school area and pedestrians.

OSGOOD ELEMENTARY OPPORTUNITIES FOR IMPROVEMENT				
LOCATION	POTENTIAL SOLUTION	LEAD AGENCY	IMPACT	
<b>A</b> South parking lot entrance	Install sidewalk or shared-use path along driveway connecting to existing sidewalk	West Fargo Public Schools	High	
<b>B</b> West side of school	Install sidewalk or shared-use path around the perimeter of school; coordinate with Location G & H	West Fargo Public Schools	Medium	
<b>C</b> 44th Ave S / 55th St S	Install pedestrian scale lighting on the north side of 44th Ave S and on the median safety island; change snow storage practices to improve sightlines in winter	City of Fargo	High	
<b>D</b> North side of school	Install bike parking to provide two points of contact with bicycle frame (e.g., Inverted U or Post and Ring style rack)	West Fargo Public Schools	Low	
<b>E</b> North parking lot	Install curb extensions to narrow crossing and decrease curb radii in entrance/exit of parking lot; install high visibility crosswalk	West Fargo Public Schools	Low	
<b>F</b> Veterans Blvd / trail crossing south of school	Install extension of boulevard or curb space to existing fog line; install RRFB; install high visibility crosswalks; install space for pedestrians in median; install forward stop bar	City of Fargo	High	
<b>G</b> East side of school	Install sidewalk or shared-use path around perimeter of building; coordinate with Locations B & H	West Fargo Public Schools	Medium	
<b>H</b> Green space / park to the south east of school to trail along drain	Install sidewalk or shared-use path connecting existing trail to sidewalk on 53rd St S; coordinate with Location G	City of Fargo; West Fargo Public Schools; Fargo Park District	High	
<b>I</b> Veterans Blvd / 44th Ave S roundabout	Install forward stop bars; install RRFB on all crossings	City of Fargo	Medium	
<b>J</b> Veterans Blvd adjacent to school and north of 44th Ave S	Install school speed zone signage consistent with similar signs in Fargo	City of Fargo	High	


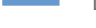



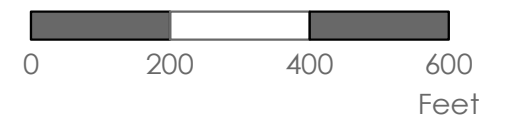
City of Fargo Safe Routes to School Plan



Infrastructure Opportunities

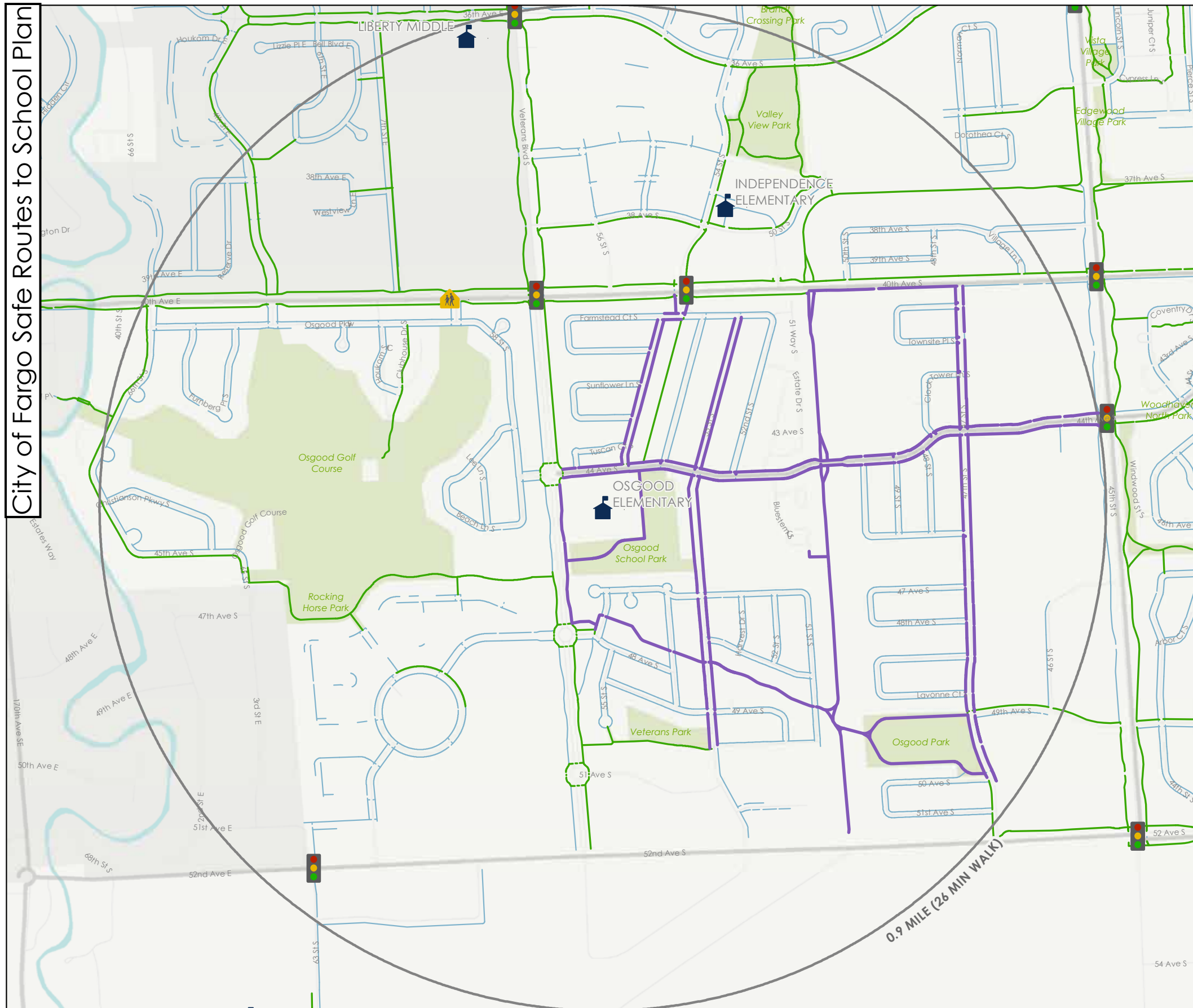
Osgood Elementary

-  Opportunities for Improvement Locations
-  High Impact
-  Medium Impact
-  Low Impact
-  Opportunities for Improvement Segments
-  High Impact
-  Medium Impact
-  Low Impact
-  Shared Use Path
-  Sidewalk
-  Building footprint
-  School grounds









**METROCOG**

City of Fargo Safe Routes to School Plan



### Suggested Routes to School Osgood Elementary

-  Suggested routes
-  Sidewalks
-  Shared Use Path
-  All-way stops
-  Traffic signal
-  Pedestrian crossing signal

