



# Sullivan Middle

5600 25th Street S, Fargo, ND 58104

## DISTRICT

---

## St. John Paul II Catholic Schools Network

## GRADES

---

6-8

## AVERAGE ENROLLMENT

---

280

## ARRIVAL

---

8:00 a.m.

## DISMISSAL

---

M, T, Th, F: 3:32 p.m.  
W: 2:45 p.m.

## Existing Conditions

Sullivan Middle is a 6th through 8th grade private Catholic school and part of St. John Paul II (JPII) Catholic Schools Network. It is located approximately 5.5 miles south of downtown Fargo in the city's Bennett neighborhood.

The school was constructed in 2002. The Sullivan Middle campus is bound by Deacon Drive to the north, 25th Street S to the west, 57th Avenue S to the south, and Bishop Boulevard to the east.

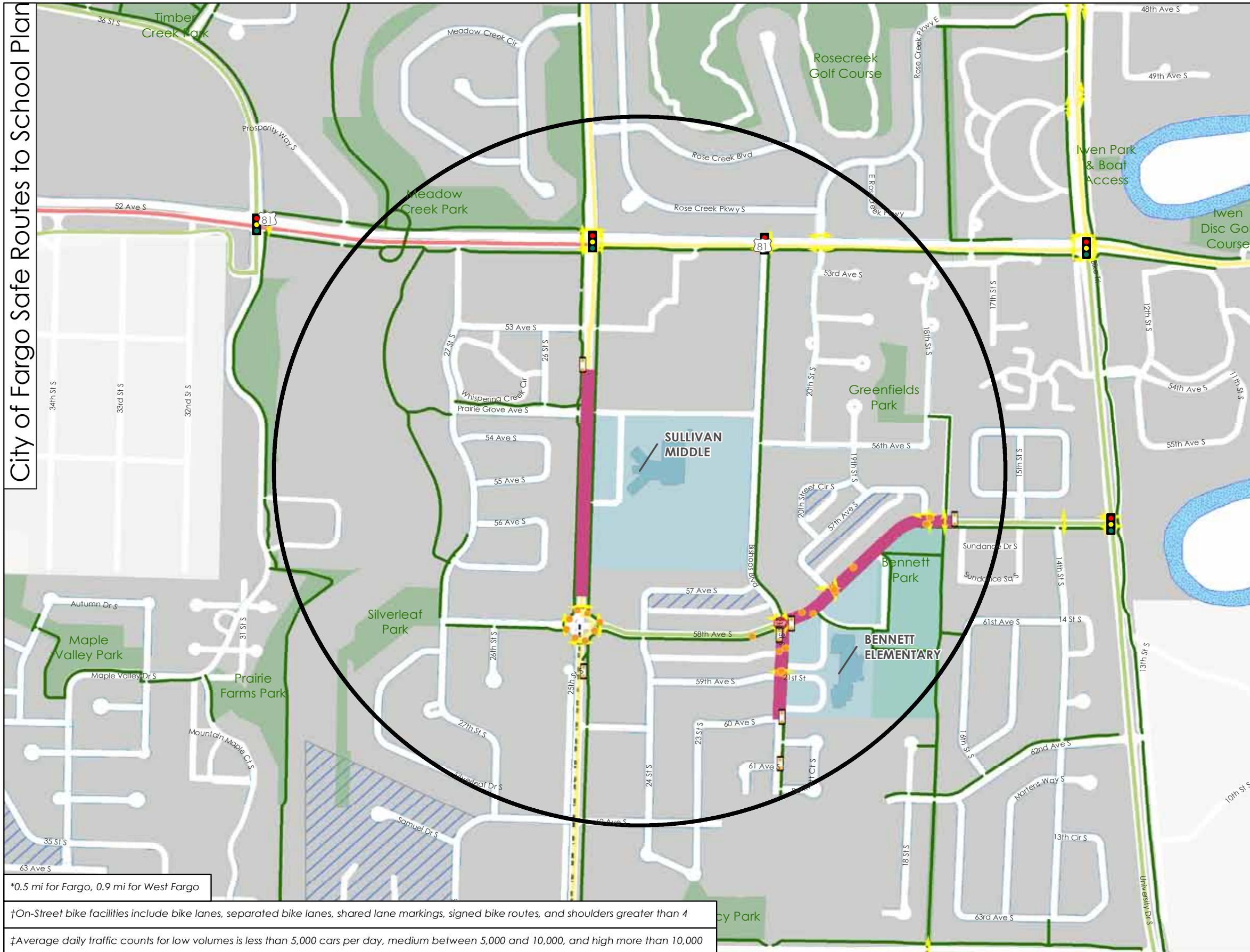
25th Street S and 52nd Avenue S are both medium- and high-volume traffic roadways. School speed zone signage is present on 25th Street S approaching Sullivan Middle's campus.



▲ The 52nd Avenue S and 25th Street S intersection is a major barrier and causes long wait times for students walking and biking.



▲ Missing sidewalks along the parking lot and circulation loops.



\*0.5 mi for Fargo, 0.9 mi for West Fargo

†On-Street bike facilities include bike lanes, separated bike lanes, shared lane markings, signed bike routes, and shoulders greater than 4

‡Average daily traffic counts for low volumes is less than 5,000 cars per day, medium between 5,000 and 10,000, and high more than 10,000

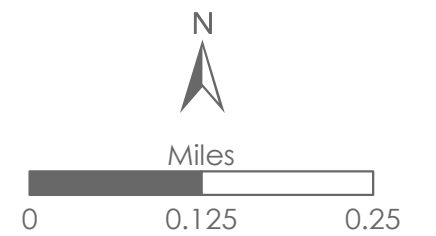
### Existing Conditions Sullivan Middle

- School Study Areas\*
- Walk Zones
- Building Footprints
- School Grounds
- Park
- Environmental Justice Areas
- School Speed Zone
- Shared Use Path
- On-Street Bike Facility†
- Sidewalk
- Crosswalk
- Pedestrian Crossing Sign
- 4-Way Stop Sign
- HAWK Signal
- Other Flashing Sign
- Signalized Intersection

### Traffic Volumes‡

- Low
- Medium
- High

\*Shanley provides a shuttle service and has no walk zone.



### Circulation Challenges

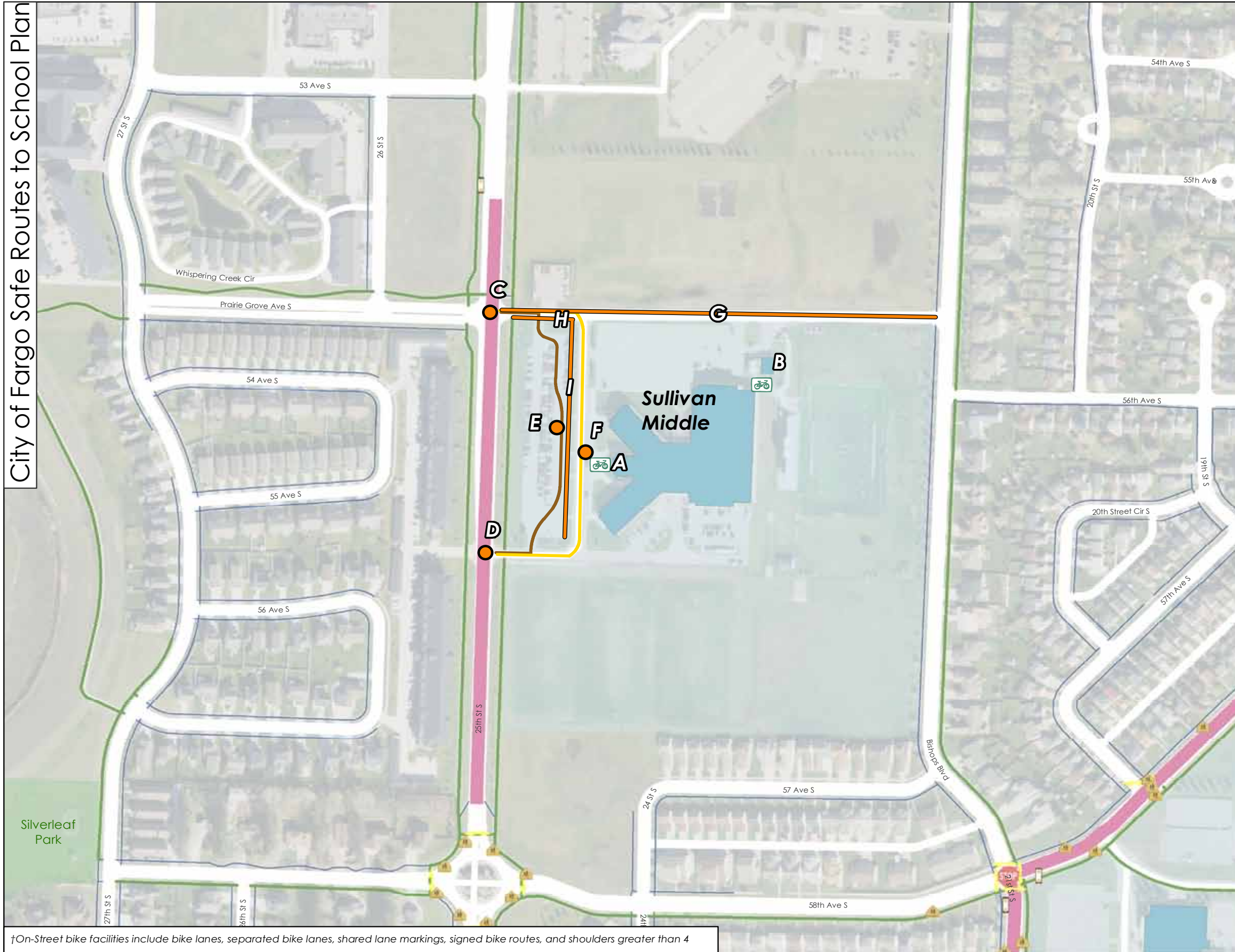
Two intersections along 25th Street S were identified as barriers in the caregiver survey.

The intersection at 25th Street S and Deacon Drive/Prairie Grove Avenue does not have any pavement marking or crosswalk signs. The 25th Street S and south driveway access to Sullivan Middle has no pedestrian crossing markings, but does include ADA compliant receiving ramps.

There are opportunities along the perimeter of campus to improve pedestrian circulation, including providing a sidewalk along Deacon Drive. There are also opportunities to improve vehicular circulation to improve safety for students walking and biking, and being picked up by parents/caregivers.

### SULLIVAN MIDDLE CHALLENGES

LOCATION	CHALLENGE
<b>A</b> Front of school	Comb style rack does not allow locking of frame and can lead to wheel damage
<b>B</b> Back of school	Comb style rack does not allow locking of frame and can lead to wheel damage ..... Bike rack placed out of site behind storage and too close to fence
<b>C</b> 25th St S / Prairie Grove Ave S	No pedestrian crossing to higher density housing
<b>D</b> 25th St S / south school access	No pedestrian crossing to higher density housing
<b>E</b> Parent loop	Wide, undefined parent circulation area ..... Drivers double park
<b>F</b> Bus loop	Long crossing distances
<b>G</b> Deacon Dr	Sidewalk gap
<b>H</b> Western parking lot and driveway	No sidewalk or clear walking route between Sullivan Middle School and 25th Street to the north
<b>I</b> Parent loop	Sidewalk gap along parent circulation area



†On-Street bike facilities include bike lanes, separated bike lanes, shared lane markings, signed bike routes, and shoulders greater than 4

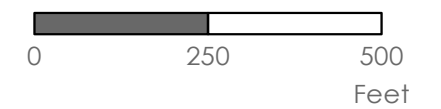
## Observed Circulation & Challenges Sullivan Middle

### Key\*

- Bus Circulation
- Challenge
- Shared Bus and Vehicle Lane
- Vehicle Drop-off and Pick-up
- ↔ Observed Walking and Biking Routes
- Bike Rack
- Challenge

### Existing Infrastructure\*

- Building Footprints
- School Grounds
- School Speed Zones
- On-Street Bike Facility†
- Sidewalk
- Shared Use Path
- ⚡ Crosswalk Marking
- Signalized Intersection
- HAWK Signal
- Other Flashing Sign
- Pedestrian Crossing Sign
- 4-Way Stop Sign



**METROCOG**

\*Legend Common to All Maps -  
Not all Features Present on All Maps

### Opportunities for Improvement

Many of the recommendations at Sullivan Middle are on campus with a focus on improving pedestrian safety and connectivity between the school's main entrance and 25th Street S. Proposed improvements include narrowing the bus pick-up and drop-off area to include a curbside lane and bypass lane, installing a sidewalk along the median between the parking lot and the bus lane, and better delineating the caregiver pick-up and drop-off areas within the western parking lot.

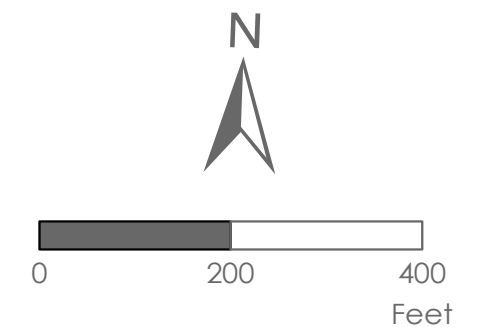
Additional recommendations include installing a sidewalk along Deacon Drive between 25th Street S and Bishops Boulevard, upgrading and relocating bicycle parking to more prominent locations, and installing pedestrian crossing improvements across 25th Street S directly west of campus.

SULLIVAN MIDDLE OPPORTUNITIES FOR IMPROVEMENT				
LOCATION	POTENTIAL SOLUTION	LEAD AGENCY	IMPACT	
<b>A</b> Front of school	Install bike parking to provide two points of contact with bicycle frame (e.g., Inverted U or Post and Ring style rack)	JPII Catholic Schools	Low	
<b>B</b> Back of school	Locate bike parking in a visible and convenient location on campus; install bike parking to provide two points of contact with bicycle frame (e.g., Inverted U or Post and Ring style rack)	JPII Catholic Schools	Low	
<b>C</b> 25th St S / Prairie Grove Ave S	Install geometric improvements to simplify pedestrian crossing such as a median safety island; install high visibility crosswalk; consider RRFB or HAWK	City of Fargo	Medium	
<b>D</b> 25th St S / south school access	Install ADA compliant curb ramps; install median safety island on south crossing; install high visibility crosswalk; consider RRFB	City of Fargo	Medium	
<b>E</b> Parent loop	Separate vehicle drop-off and pick-up from general parking; install curb, sidewalk, signage, and other hardscape and striping treatments to define vehicle circulation area	JPII Catholic Schools	Medium	
<b>F</b> Bus loop	Reduce width of bus circulation area to include one loading/unloading lane and one bypass lane; install high visibility crosswalks from front door to sidewalk/parking area	JPII Catholic Schools	Medium	
<b>G</b> Deacon Dr	Install sidewalk or shared-use path to fill existing gap	JPII Catholic Schools	High	
<b>H</b> Western parking lot and driveway	Install sidewalk or shared-use path to connect students from Sullivan to Prairie Grove Ave S	JPII Catholic Schools	High	
<b>I</b> Parent loop	Install sidewalk along west side of median where curbside pick-up and drop-off occurs	JPII Catholic Schools	High	

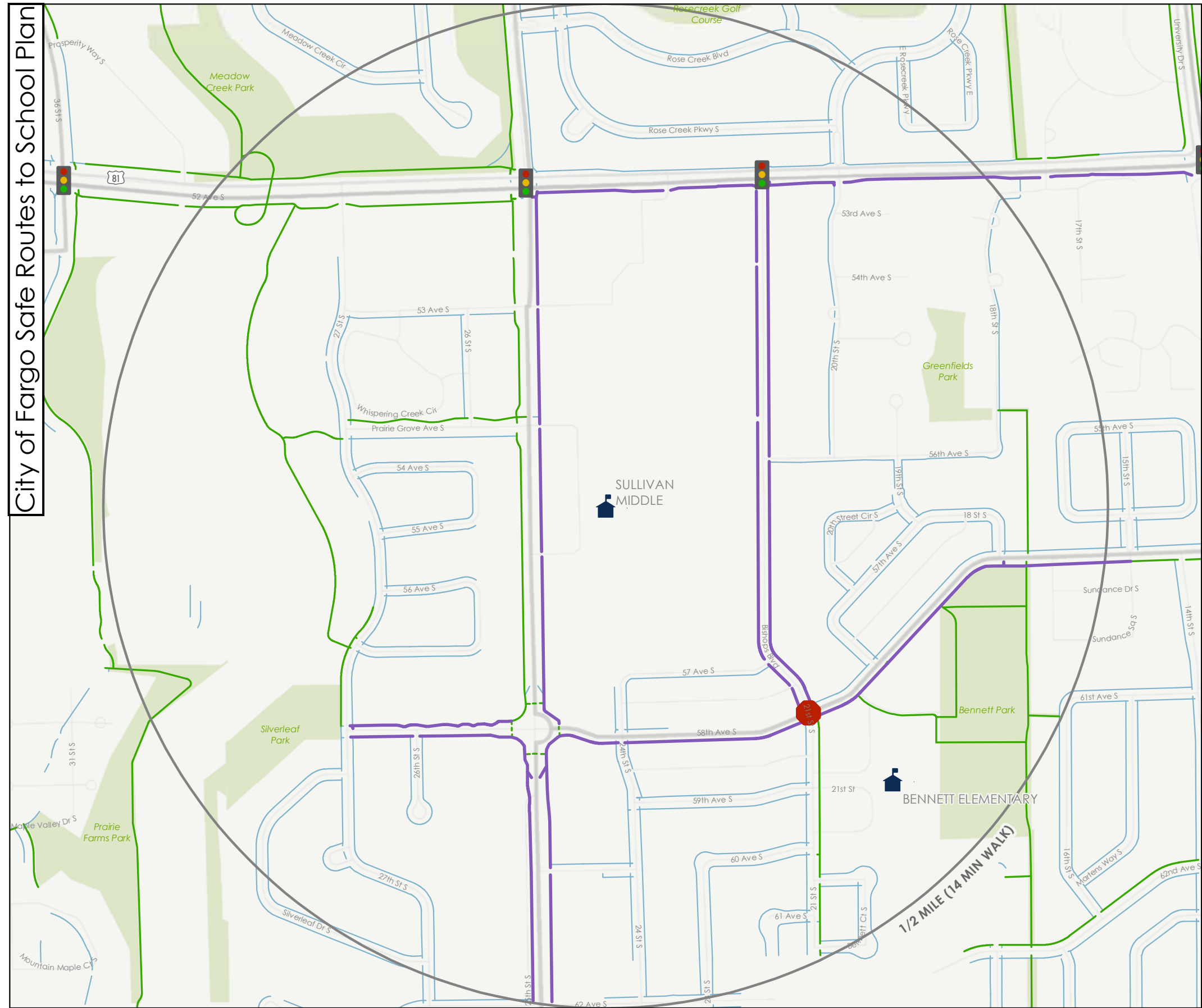


### Infrastructure Opportunities Sullivan Middle

-  Opportunities for Improvement Locations
-  High Impact
-  Medium Impact
-  Low Impact
-  Opportunities for Improvement Segments
-  High Impact
-  Medium Impact
-  Low Impact
-  Shared Use Path
-  Sidewalk
-  Building footprint
-  School grounds



City of Fargo Safe Routes to School Plan



Suggested Routes to School  
Sullivan Middle

- Suggested routes
- Sidewalks
- Shared Use Path
- All-way stops
- Traffic signal
- Pedestrian crossing signal

