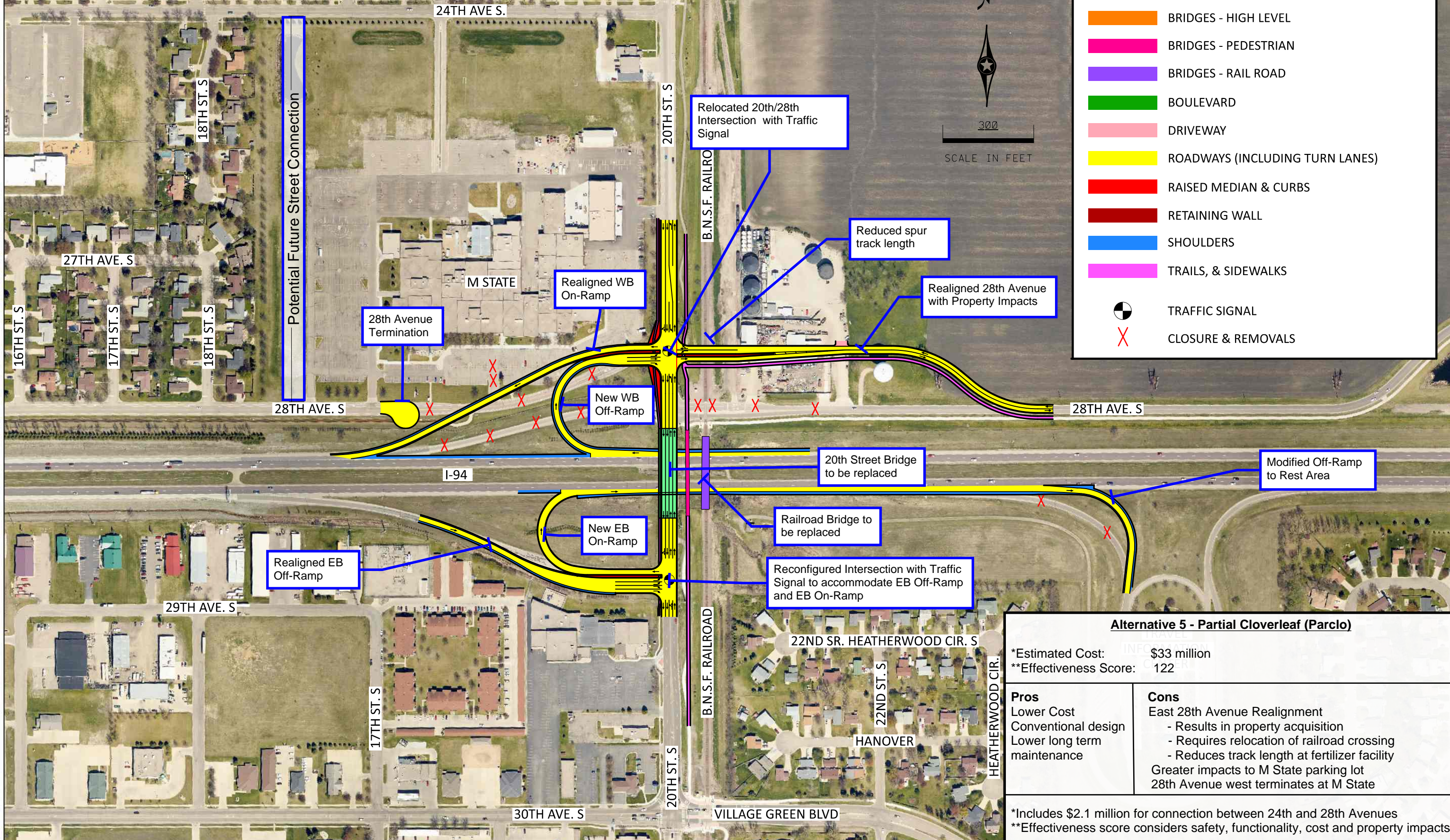


Partial Cloverleaf Interchange

LEGEND	
	BRIDGES - CONVENTIONAL
	BRIDGES - HIGH LEVEL
	BRIDGES - PEDESTRIAN
	BRIDGES - RAIL ROAD
	BOULEVARD
	DRIVEWAY
	ROADWAYS (INCLUDING TURN LANES)
	RAISED MEDIAN & CURBS
	RETAINING WALL
	SHOULDERS
	TRAILS, & SIDEWALKS
	TRAFFIC SIGNAL
	CLOSURE & REMOVALS



Alternative 5 - Partial Cloverleaf (Parclo)	
*Estimated Cost:	\$33 million
**Effectiveness Score:	122
Pros	Cons
<ul style="list-style-type: none"> Lower Cost Conventional design Lower long term maintenance 	<ul style="list-style-type: none"> East 28th Avenue Realignment <ul style="list-style-type: none"> - Results in property acquisition - Requires relocation of railroad crossing - Reduces track length at fertilizer facility Greater impacts to M State parking lot 28th Avenue west terminates at M State
*Includes \$2.1 million for connection between 24th and 28th Avenues	
**Effectiveness score considers safety, functionality, cost and property impacts	

PLOTTED/REVISED:

MODEL NAME: Default
PATH & FILENAME: PV: stm_bh_infra01...193806854/193806354_ Exhibit-Alt_5.dgn

NO	DATE	APPR	REVISION	SURVEY



FARGO-MOORHEAD METROPOLITAN COUNCIL OF GOVERNMENTS
I-94 & 20TH STREET INTERCHANGE

ALTERNATIVE 5
PARTIAL CLOVERLEAF

STATE PROJ. NO.	-	SHEET NO.	6
TRUNK HWY.	194	TOTAL SHEETS	6