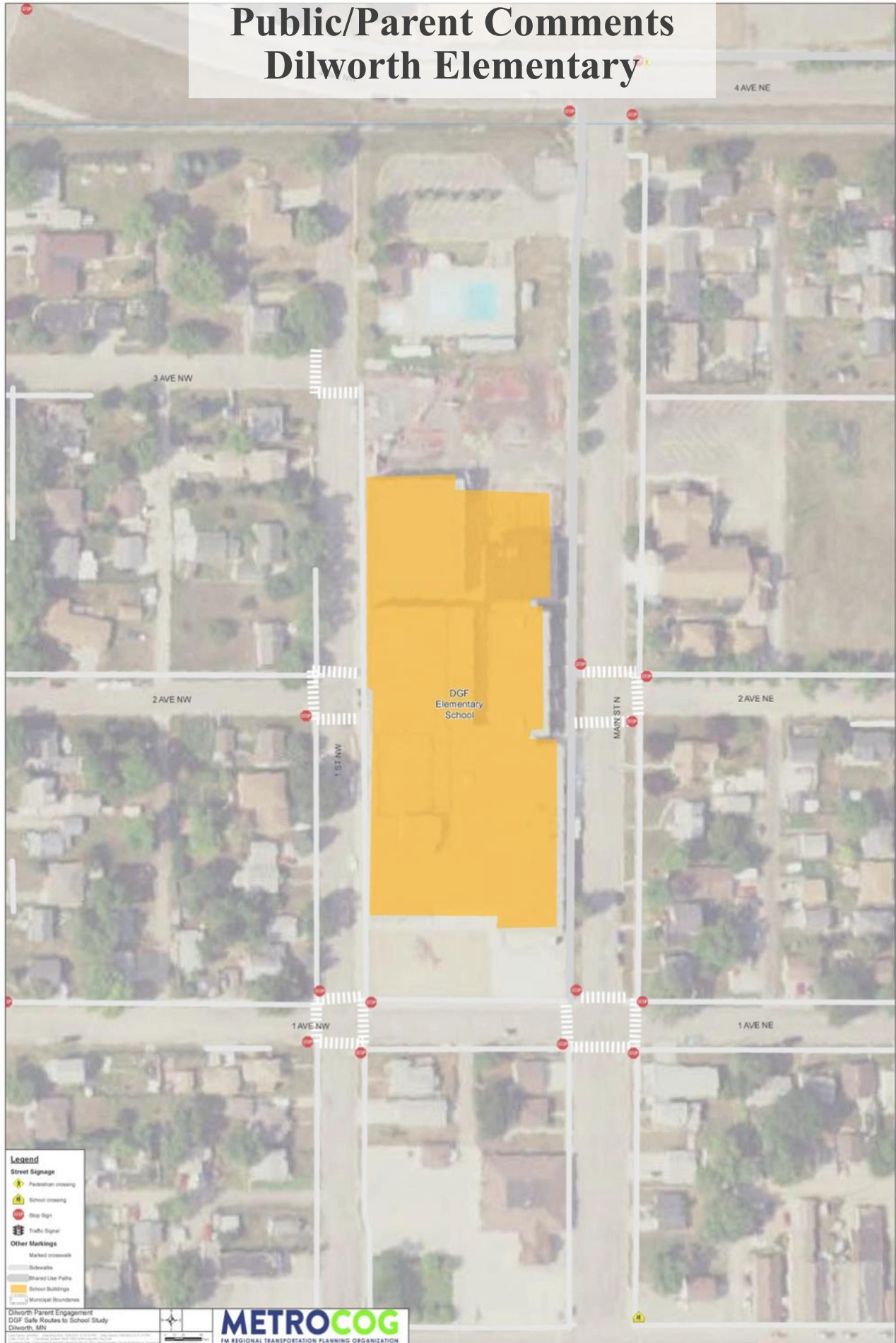


Public/Parent Comments Dilworth Elementary



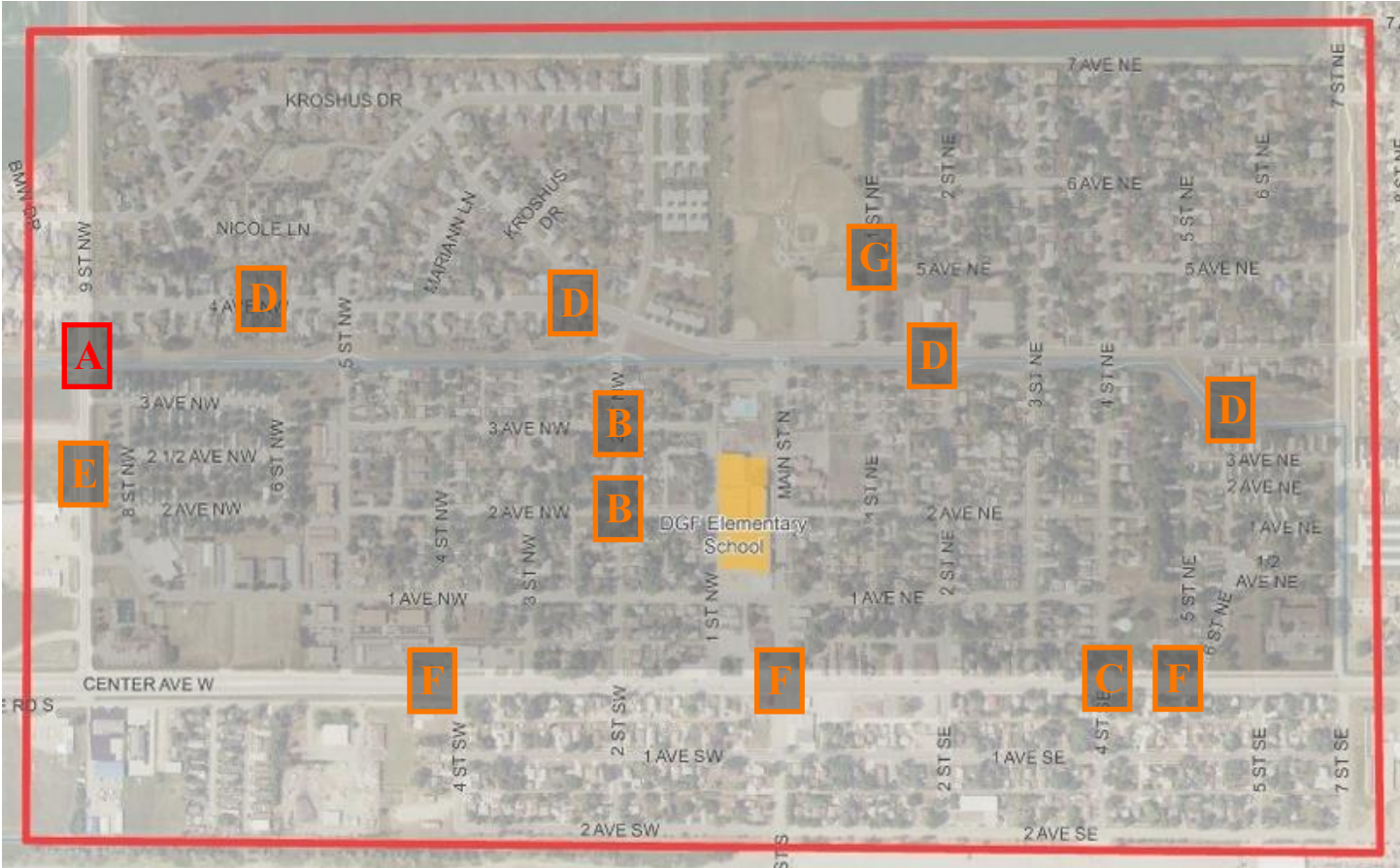
Legend
Street Signage
 Pedestrian crossing
 School crossing
 Stop Sign
 Traffic Signal
Other Markings
 Marked crosswalk
 Sidewalk
 Shared Use Paths
 School Buildings
 Municipal Boundaries

Dilworth Parent Engagement
 DGF Safe Routes to School Study
 Dilworth, MN



METROCOG
 FM REGIONAL TRANSPORTATION PLANNING ORGANIZATION

Public/Parent Comments Dilworth Elementary



Public/Parent Comments Dilworth Elementary School

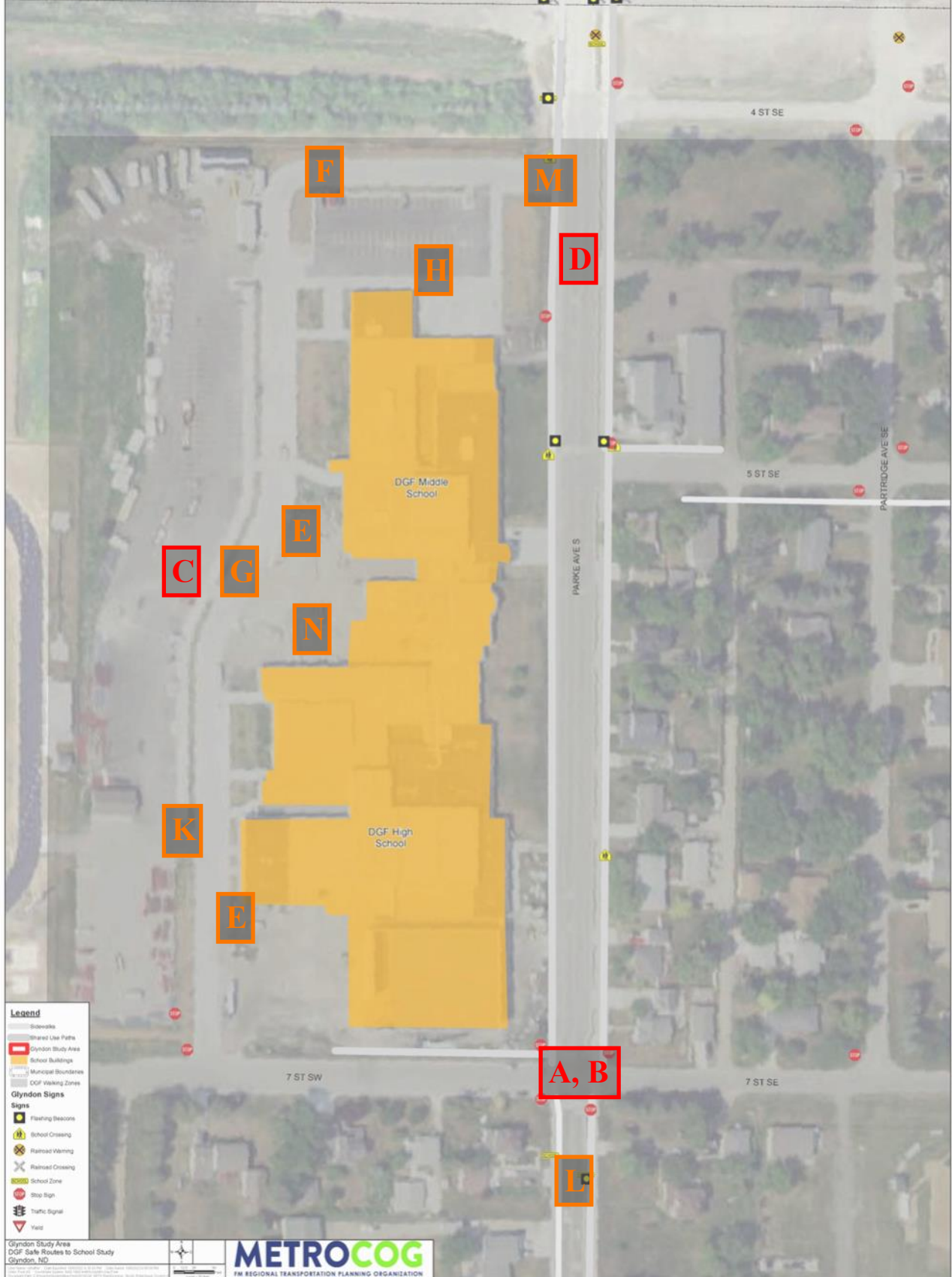
3+ Comments

- A** Concerns at this crosswalk. People don't stop for pedestrians or slow down at this crosswalk. This crosswalk should have flashing beacons.

1-2 Comments

- B** These intersections could use stop signs
- C** Nobody stops for pedestrians at this intersection. There should be a stop light.
- D** Shared use path on north side of 4th Ave not cleared of snow in winter.
Vehicles speed on 4th Ave.
Opportunity to have a 'walking school bus' and/or 'bike train' along 4th Ave.
- E** There should be a sidewalk or shared use path along CR 9
- F** Hwy 10 is a big safety concern, particularly for those that live south of the Hwy.
- G** There should be sidewalks along 1st St NE

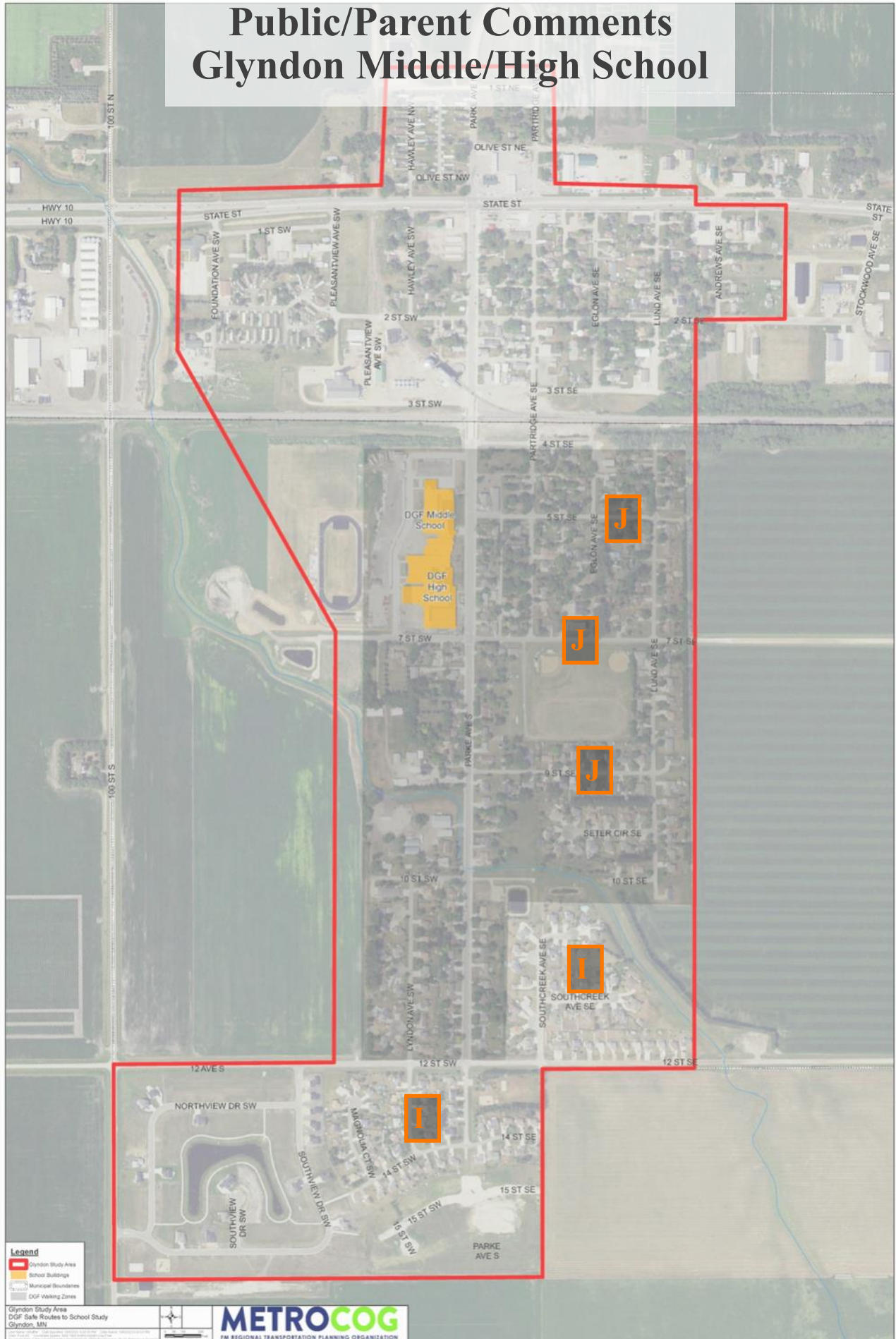
Public/Parent Comments Glyndon Middle/High School



- Legend**
- Bikepaths
 - Shared Use Paths
 - Glyndon Study Area
 - School Buildings
 - Municipal Boundaries
 - DGF Walking Zones
- Glyndon Signs**
- Flashing Beacon
 - School Crossing
 - Railroad Warning
 - Railroad Crossing
 - School Zone
 - Stop Sign
 - Traffic Signal
 - Yield

Glyndon Study Area
DGF Safe Routes to School Study
Glyndon, ND

Public/Parent Comments Glyndon Middle/High School



Public/Parent Comments Glyndon Middle/High School

3+ Comments

- A** This intersection is a concern. Need one or more crossing guard at this intersection.
- B** This intersection is a concern. Drivers often don't fully stop at this intersection.
- C** Parents drop off students within the parking lot at this location. It is the closest and most convenient drop-off for parents. However there are vehicles traveling in both directions, vehicles are backed-up, students are crossing, and vehicles are trying to back out.
- D** School buses heading north can't find a gap in traffic to turn left into school driveway. Cars often have to voluntarily stop to allow buses to turn left.

1-2 Comments

- E** Staff monitoring needed
- F** This should be a one-way (westbound) rather than two-way
- G** Kids won't necessarily watch for oncoming busses when crossing. Make this a bus lane plus a vehicle drop-off lane.
- H** Very few parents drop off students here. There should be more communication to parents that this is a drop-off area
- I** Students in these areas should also have to walk to school since most of the rest of the town is not bussed and needs to walk
- J** There are no sidewalks on 9th St, 7th St, and 5th St. Students use these corridors to get to school. The lack of sidewalks on 7th St is most concerning since this street is busier and students use this corridor to access the ball fields.
- K** Too tight of a corner for turning
- L** This flashing beacon/school zone should be moved further south.
- M** Extremely difficult to exit when heading north, especially when train is present.
- N** The school needs to provide bike racks by the front entrance