

# 2022 Bicycle and Pedestrian Count Report

Counts located in: West Fargo, Fargo, Moorhead, Dilworth  
Data from 2013—2021



Prepared by:

The Fargo-Moorhead Metropolitan Council of Governments

**METROCOG**  
FM REGIONAL TRANSPORTATION PLANNING ORGANIZATION

March, 2022

# 2022 Bicycle and Pedestrian Count Report

## Report background

The Fargo-Moorhead Metropolitan Council of Governments (Metro COG) is the designated metropolitan planning organization for the Fargo-Moorhead metro area. A major responsibility of Metro COG's efforts is transportation planning which includes planning for bicycle and pedestrian facilities. Understanding the demand for bicycle and pedestrian facilities allows local units of government and Metro COG to plan for future bicycle and pedestrian use in the area. This report details both manual and automated counts taken since 2013 and 2014 respectively.

This area left intentionally blank

**Automated Counts**  
**2014—2021**

# Automated Counts

## Metro COG Counters

A total of five automated counters are placed at various locations in the Fargo-Moorhead Metro Area. The five counters are TRAFx G3 Infrared Trail Counters. However three of the five TRAFx counters were replaced in the fall of 2021 with the more modern EcoCounters (MULTI system at two locations and PYRO-Box at one location). Below is a description of the counter locations.

- Broadway west sidewalk just south of 2nd Ave N, Downtown Fargo
- Eagle Run Neighborhood Trail between Rendezvous Park and 9th St W, West Fargo
- Lindenwood Park / Gooseberry Park bicycle & pedestrian bridge, Fargo/Moorhead
- Milwaukee Trail between 35th Ave S and 37th Ave S, Fargo
- Oak Grove Park / Memorial Park bicycle & pedestrian bridge, Fargo/Moorhead

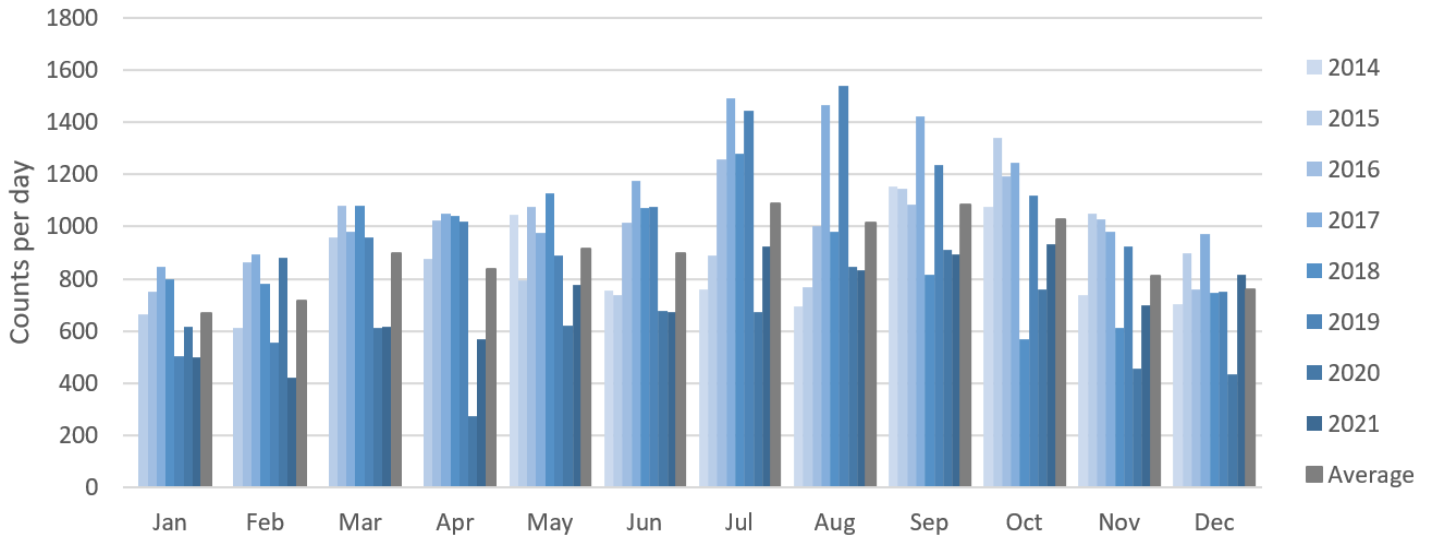
These counters count passer-byers 7 days a week, 24 hours a day, 365 days a year. It is important to note that these counters are not capable of differentiating between bicyclists and pedestrians. In addition, if two or more people are walking/biking side-by-side, the counter often records the group as one individual. Therefore, actual counts are higher than recorded. In 2020 Metro COG conducted a study to determine how many people actually passed by a counter versus the number recorded by the counter. The counter located along the Milwaukee Trail showed that 1.44 times more people actually passed by the counter than were recorded. The counter located on Broadway showed 1.77 times more people passed by than were recorded by the counter. Since not all automated counters were studied, and for data consistency, these multipliers are not incorporated in the data shown in this report.

## MnDOT Counter

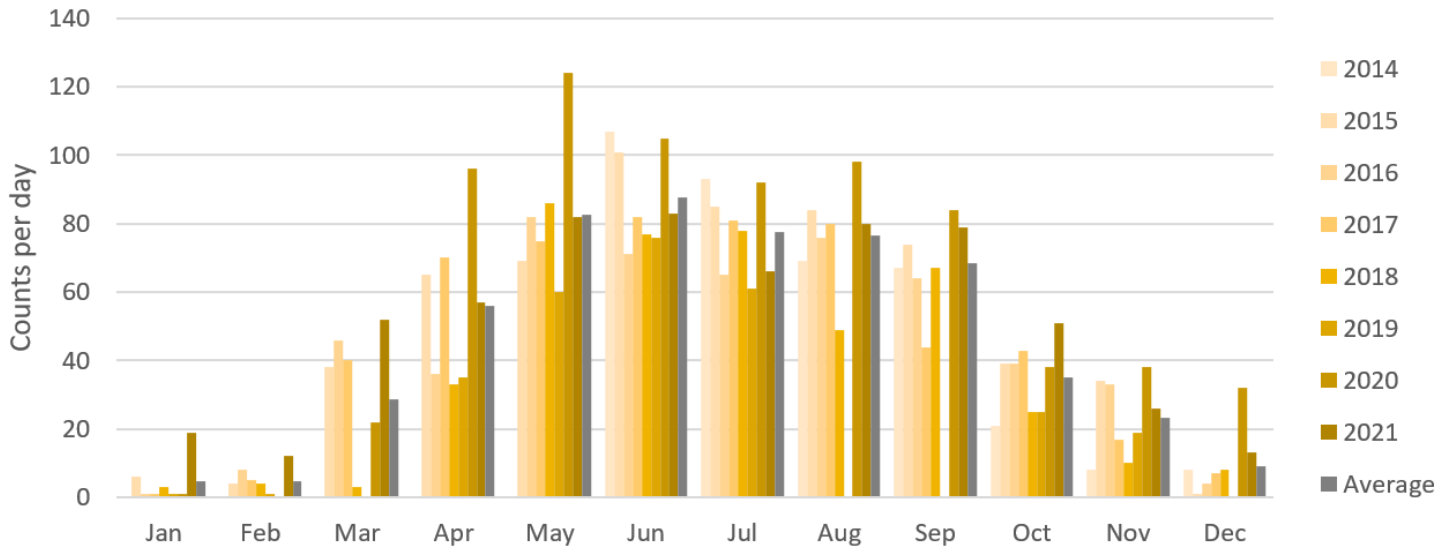
The Minnesota Department of Transportation (MnDOT) installed an automated counter in 2016 when the I-94 interchange at 8th St (US 75) was reconstructed. The counter is made by EcoCounter and uses both infrared technology and inductive pavement loop detection, allowing the counter to differentiate between bicycles and pedestrians. In addition, this counter is capable of detecting both directions of travel on the path. This counter is located on & along the shared use path on the east side of 8th St just north of the I-94 westbound off-ramp. The counter is one of 27 bicycle/pedestrian counters located across Minnesota.

The following pages show the monthly count data per counter along with an overall comparison of counts per location annually.

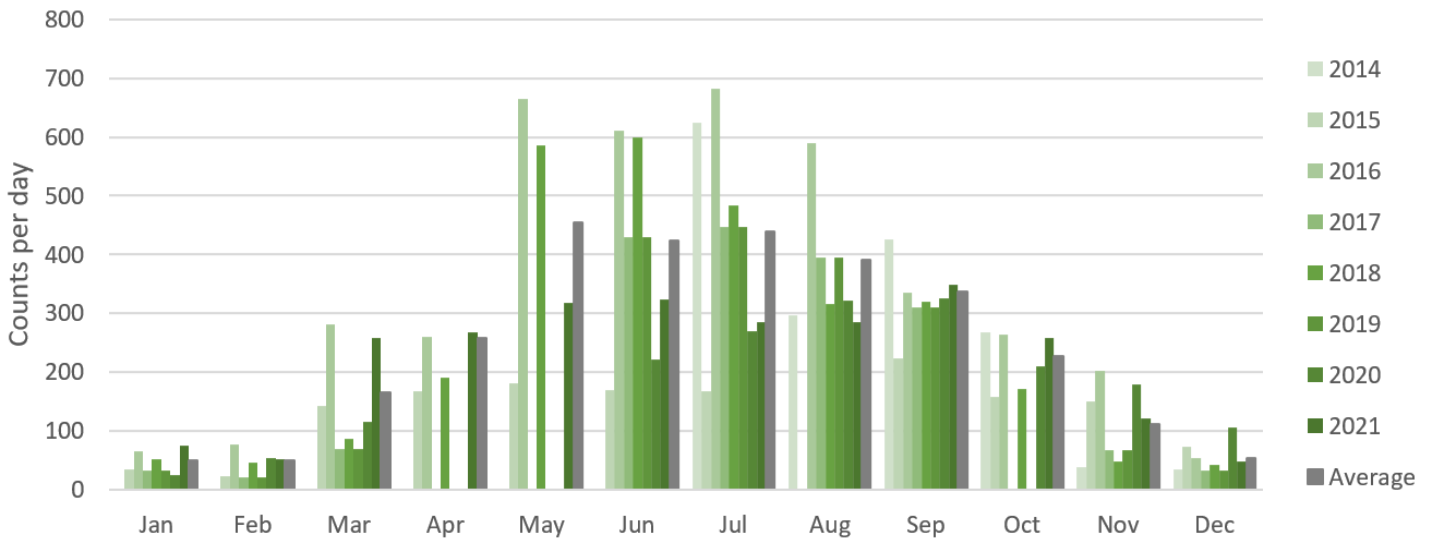
### Broadway Sidewalk - Just S. of 2nd Ave N



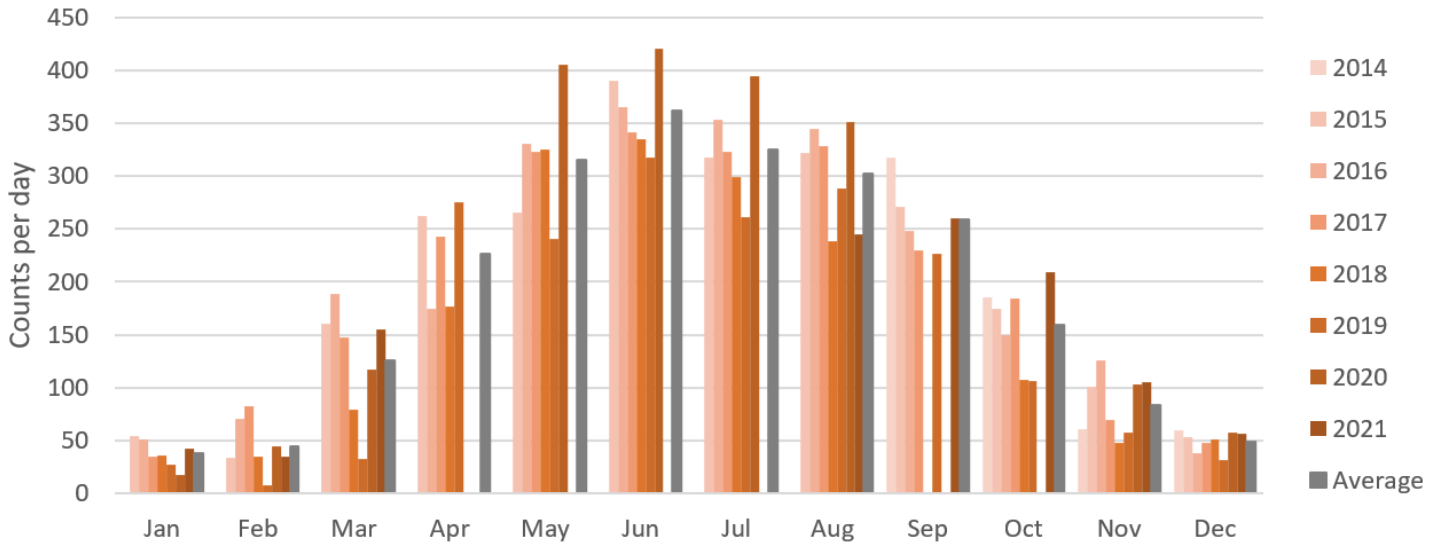
### Eagle Run Trail



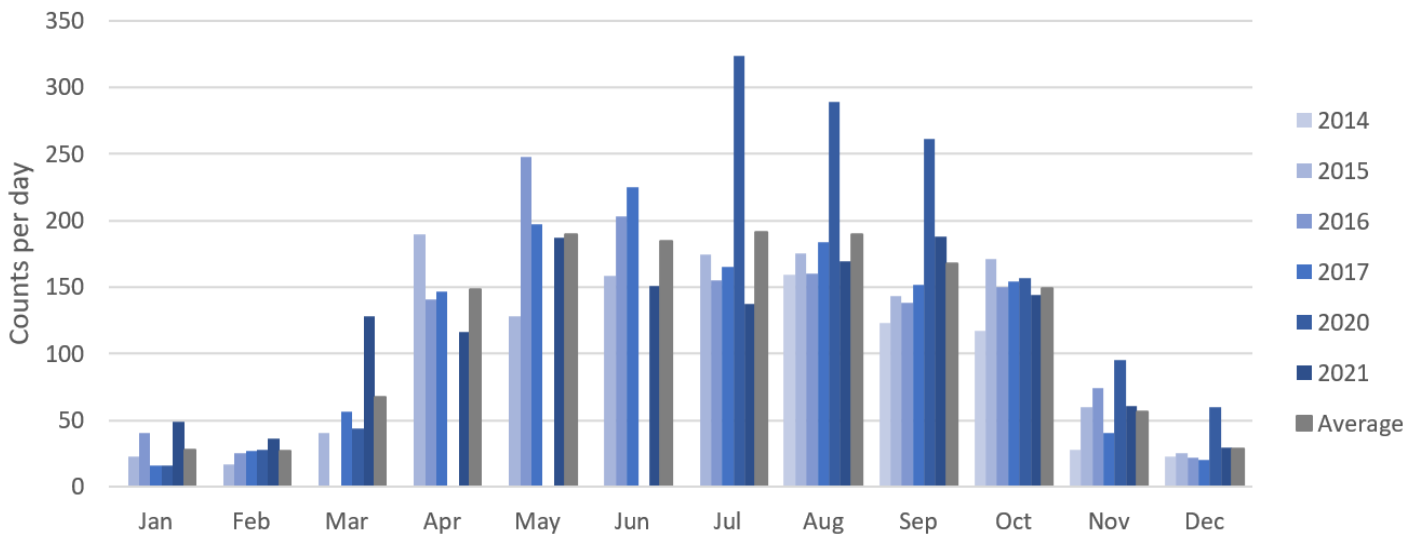
### Lindenwood/Gooseberry Park Bridge



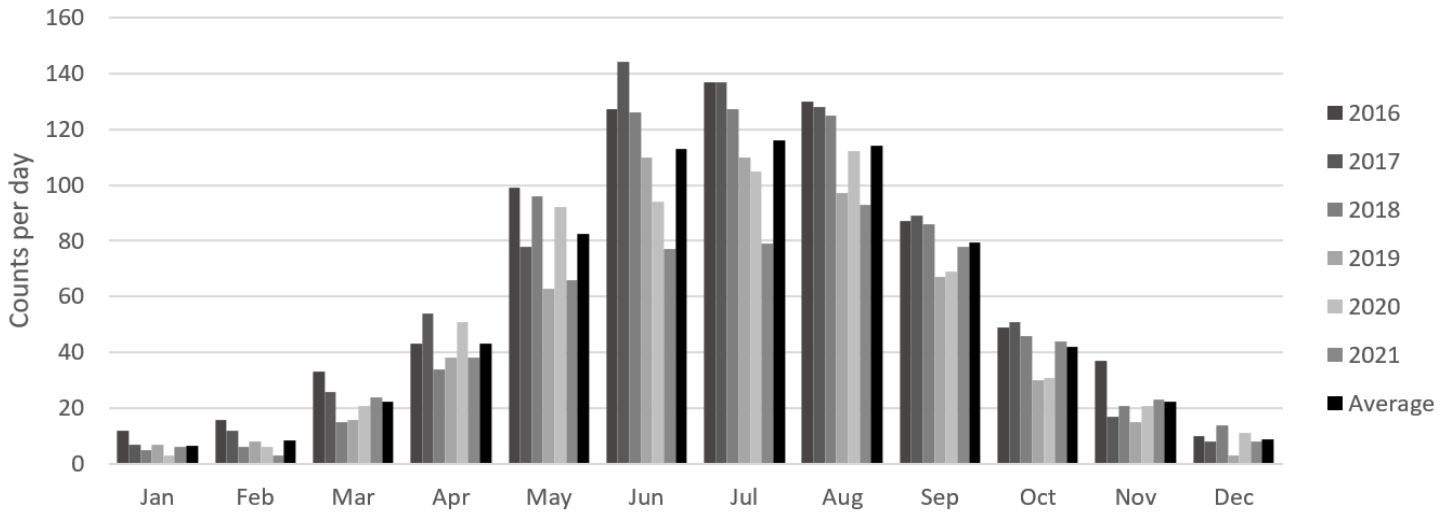
## Milwaukee Trail



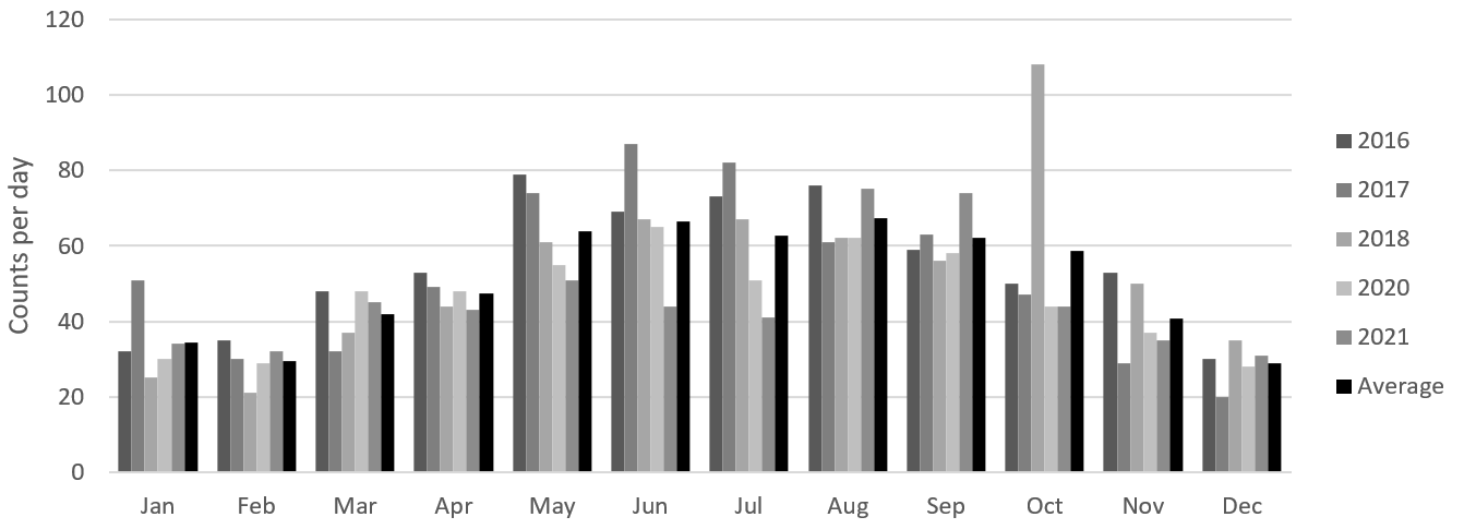
## Oak Grove/Memorial Park Bridge



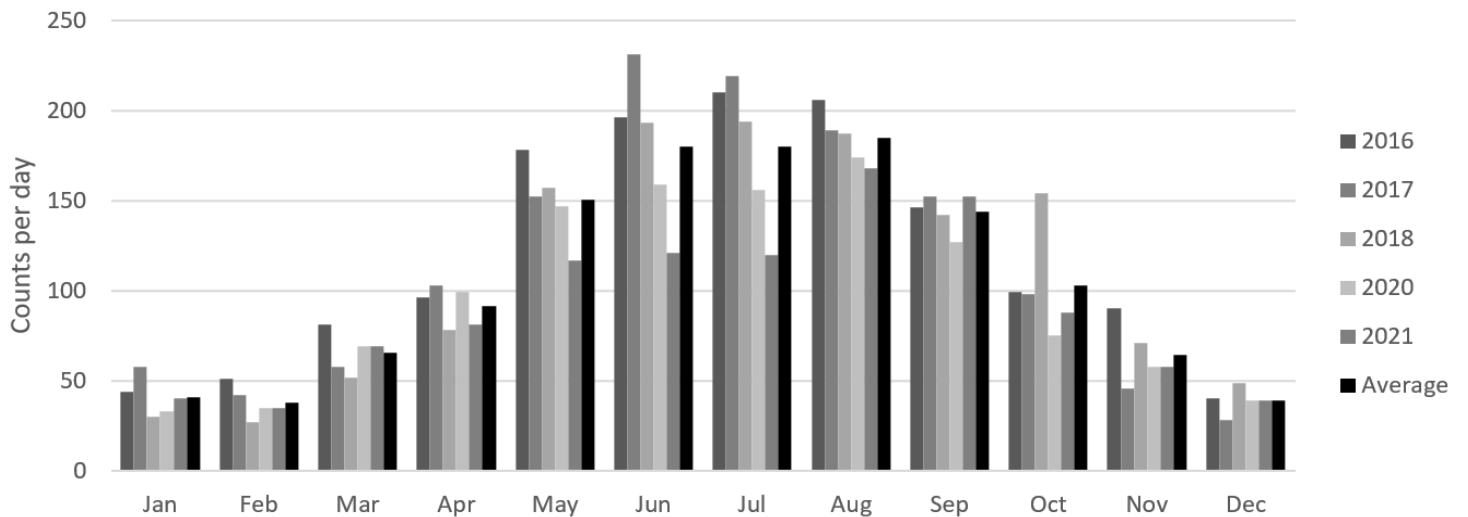
### Moorhead 8th St Trail crossing I-94 - Bicycles



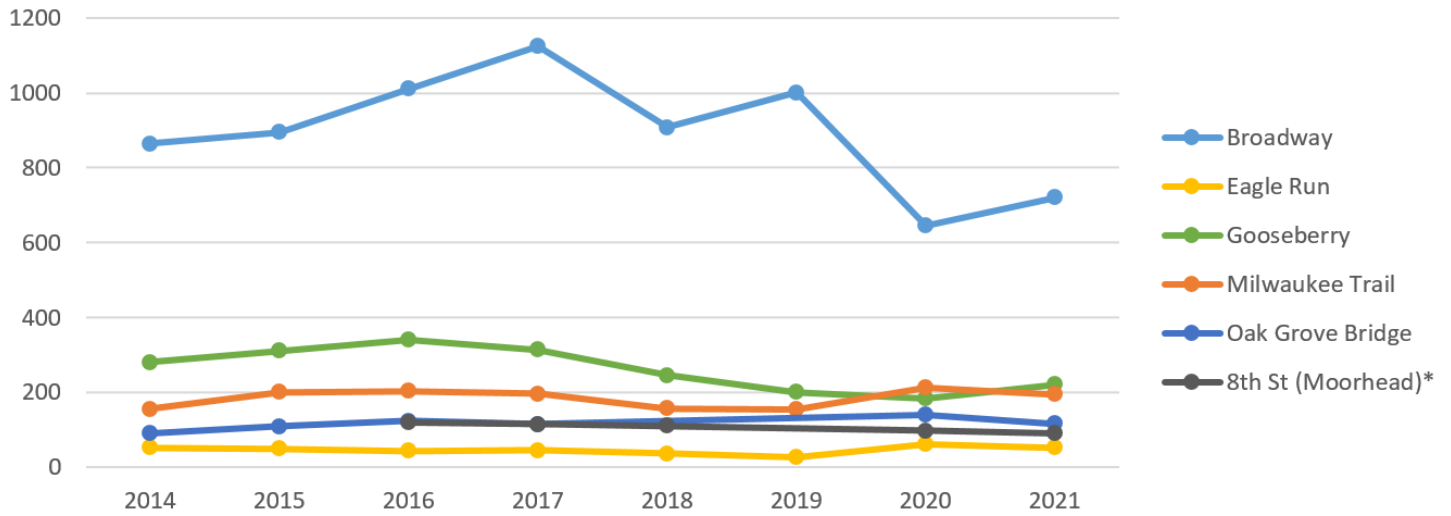
### Moorhead 8th St Trail crossing I-94 - Pedestrians



### Moorhead 8th St Trail crossing I-94 - Bike & Pedestrians



### Average Annual Daily Counts



\* Includes both bicycle & pedestrian counts

### Average Annual Daily Counts

	2014	2015	2016	2017	2018	2019	2020	2021	Average (2014-2021)
<b>Broadway</b>	865	894	1011	1124	908	1001	646	721	896
<b>Eagle Run Trail</b>	53	50	44	45	37	28	61	52	46
<b>Gooseberry Bridge</b>	281	311	341	315	245	201	183	220	262
<b>Milwaukee Trail</b>	156	200	203	196	157	156	212	195	184
<b>Oak Grove Bridge</b>	90	109	123	115	-	-	142	116	116
<b>8th St (Moorhead)*</b>	-	-	120	115	111	-	98	91	107

*\*Includes both bicycle & pedestrian counts*



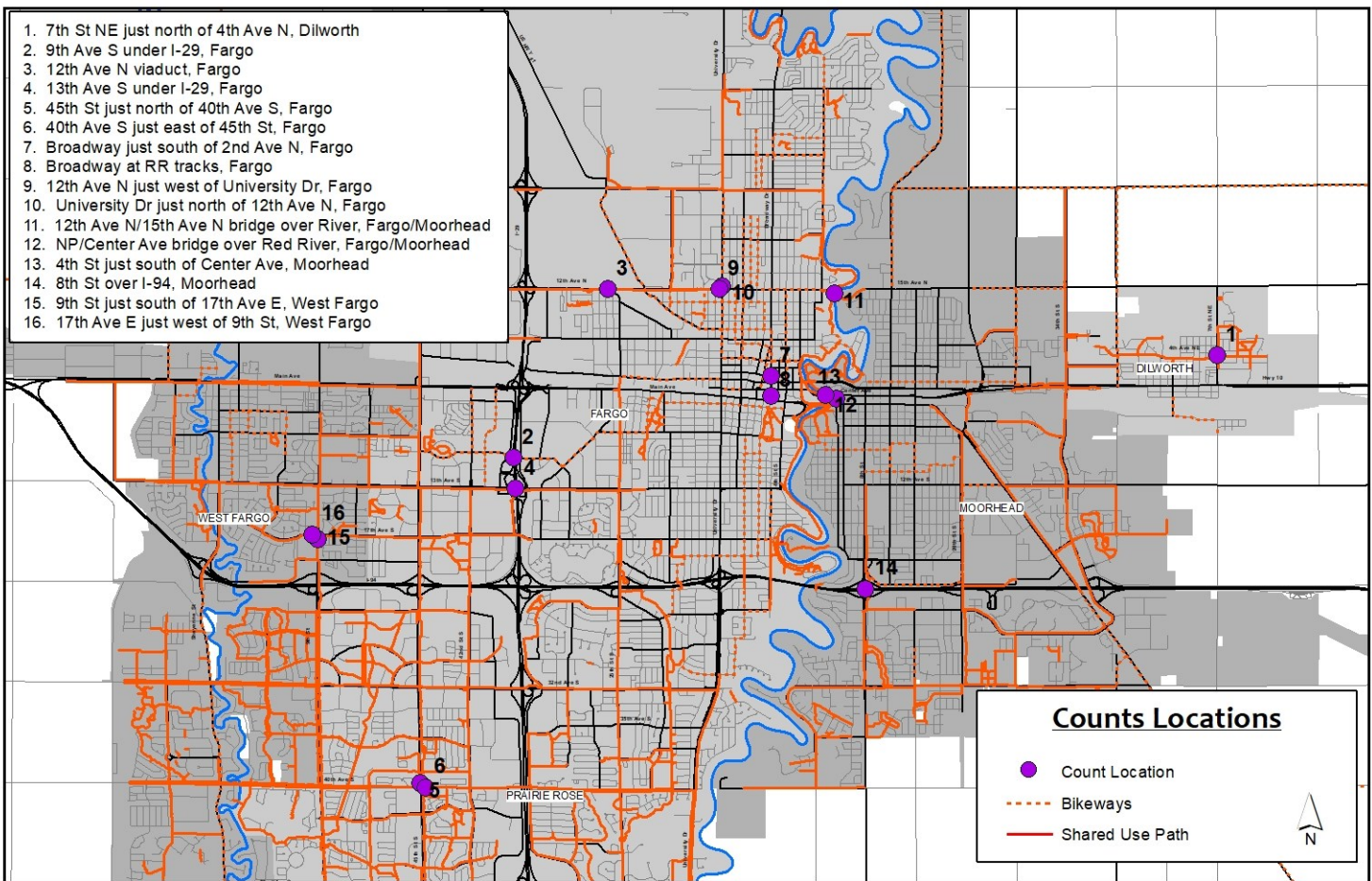
**Manual Counts**  
**2013—2021**

# Manual Counts

Manual counts are conducted once a year for a four-hour period on a typical weekday in September (Note: locations near NDSU campus are counted for a five-hour period). Based on availability of staff and resources some locations are counted for two consecutive weekdays to increase accuracy. The counts are taken at 16 locations in the Fargo-Moorhead Metro Area. These counts differentiate between pedestrians, bicyclists on the path/sidewalk, and bicyclists on the street where applicable. Poor weather conditions are avoided in order to provide a consistent count platform. However, variations in weather do occur which likely have some effect on the number of bicyclists and pedestrian from year to year.

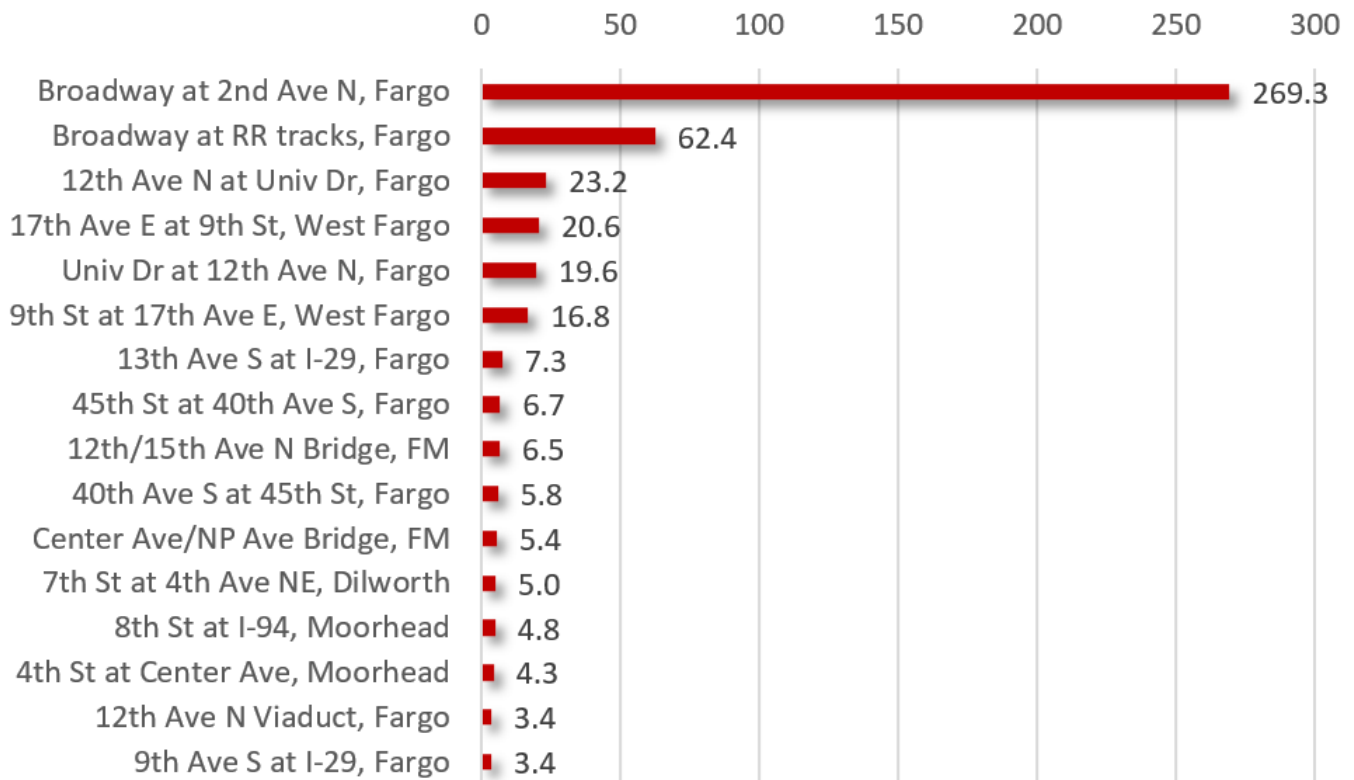
The count data shown in this section of the report includes years 2013 through 2020, however several locations may not include all years due to previous counting mythology, construction, or equipment failure. Below is a map showing the location of each manual count:

## Manual Count Locations

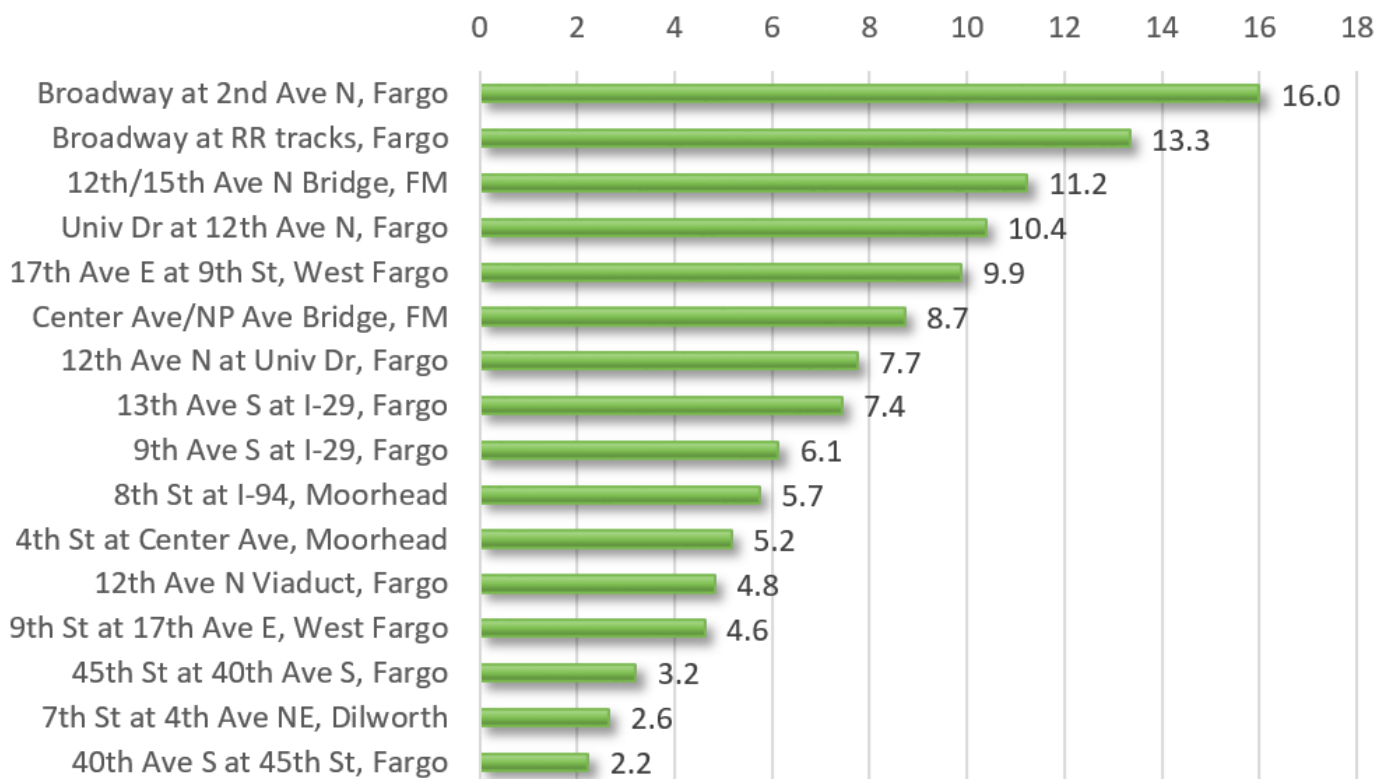


The following pages show the manual bicycle and pedestrian count data for the years 2013 through 2021.

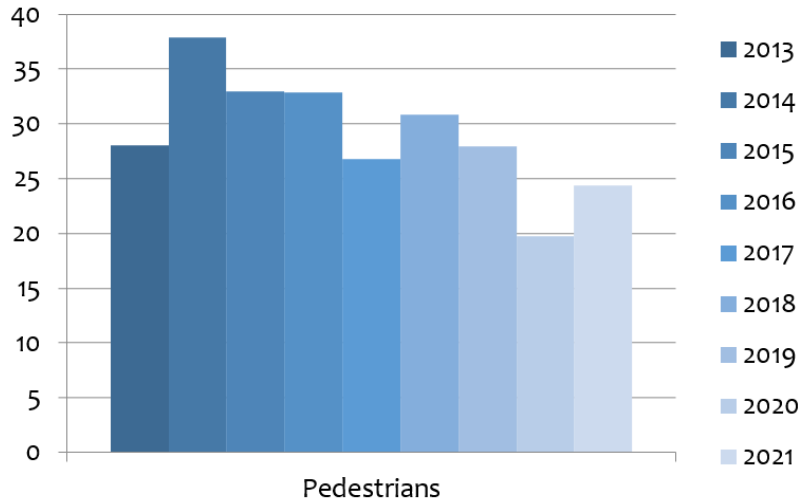
## Pedestrians per hour (Average of years 2013 - 2021)



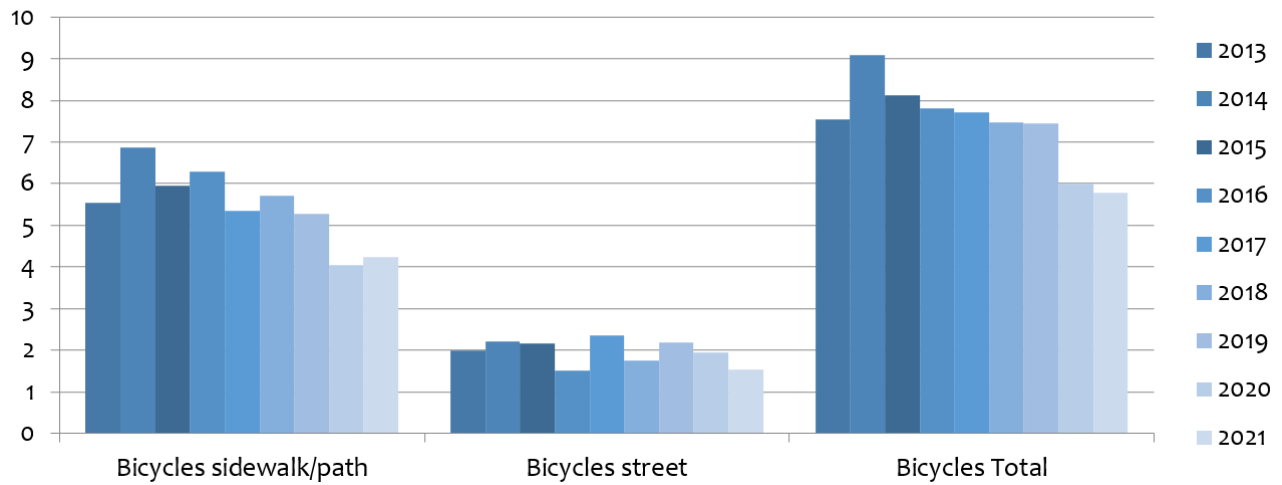
## Bicycles per hour (Average of years 2013 - 2021)



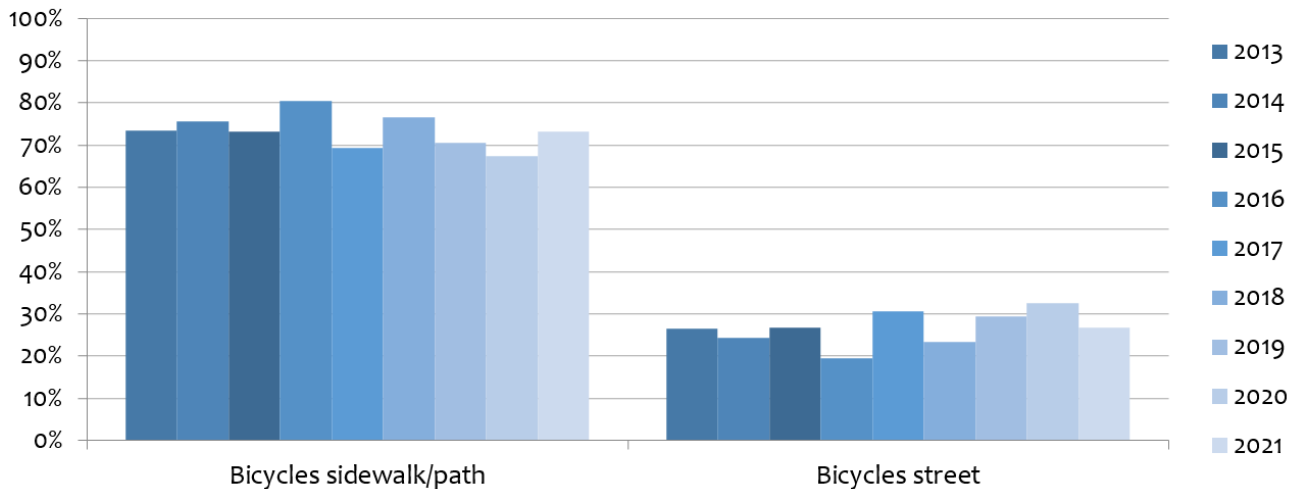
### Pedestrian counts per hour by year (average of all locations)



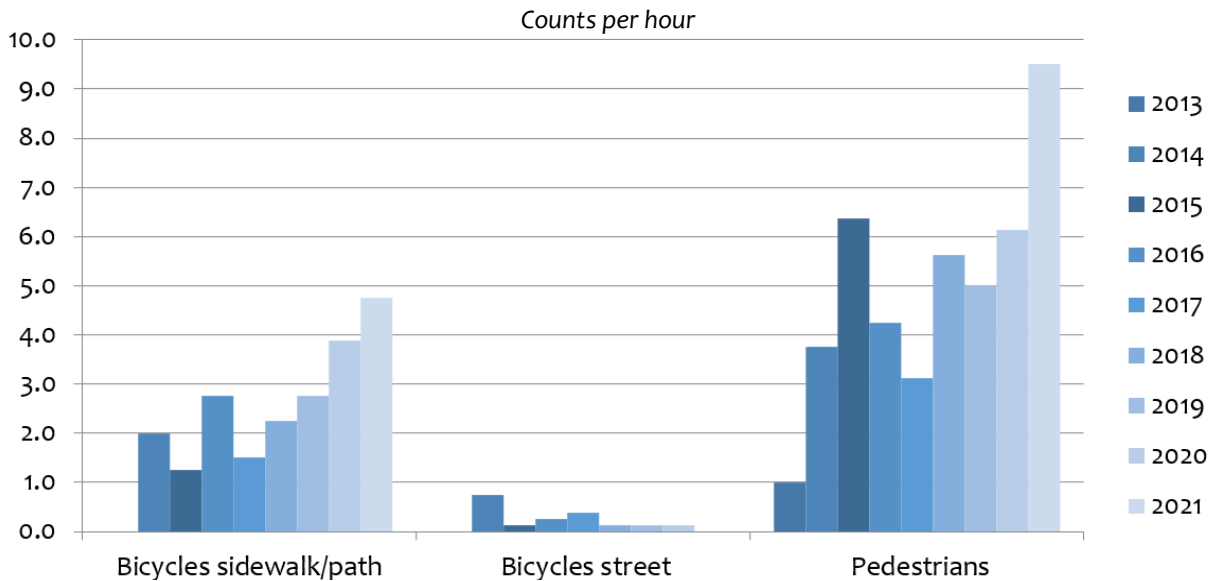
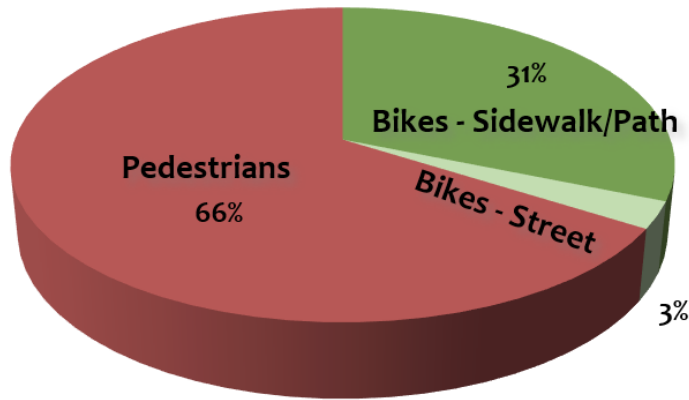
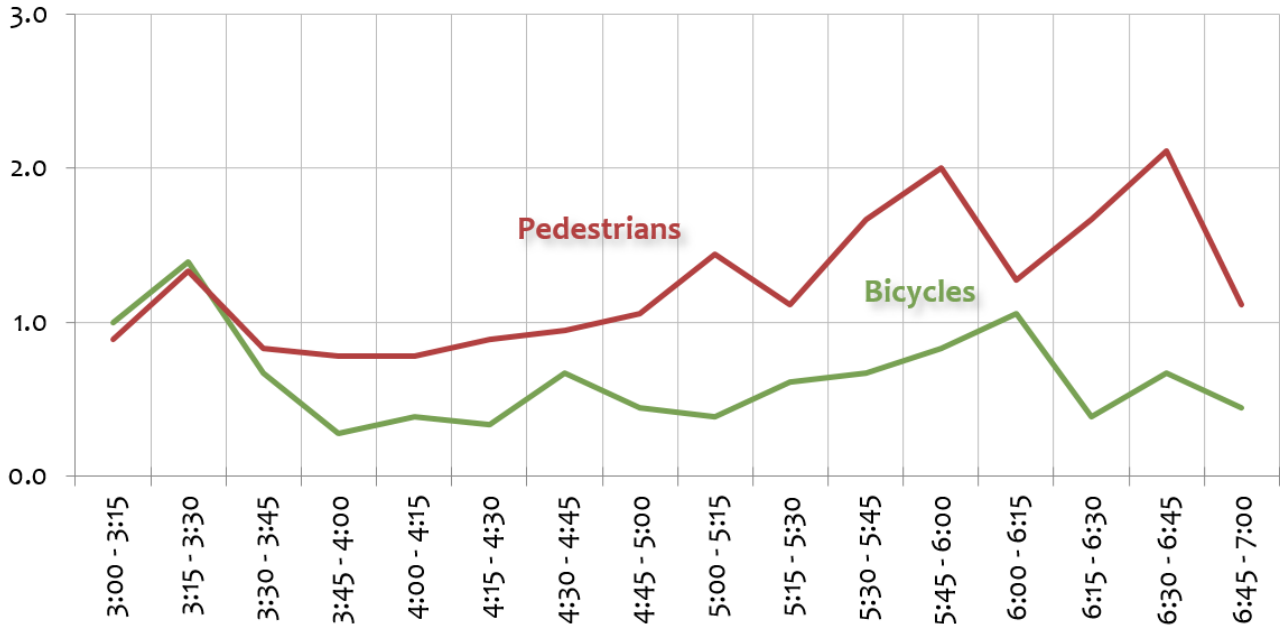
### Bicycle counts per hour by year (average of all locations)



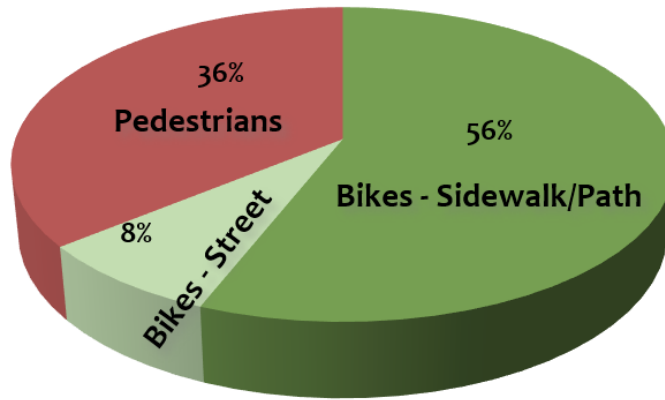
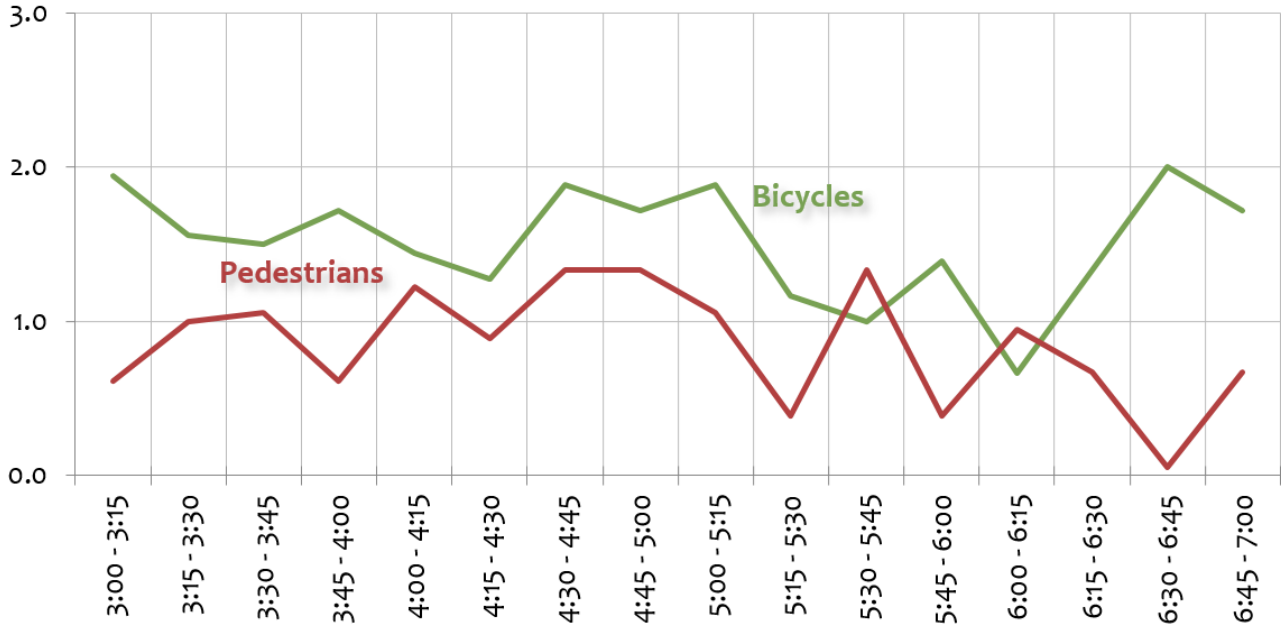
### % of bikes on sidewalk/path vs. bikes on street (average of all locations)



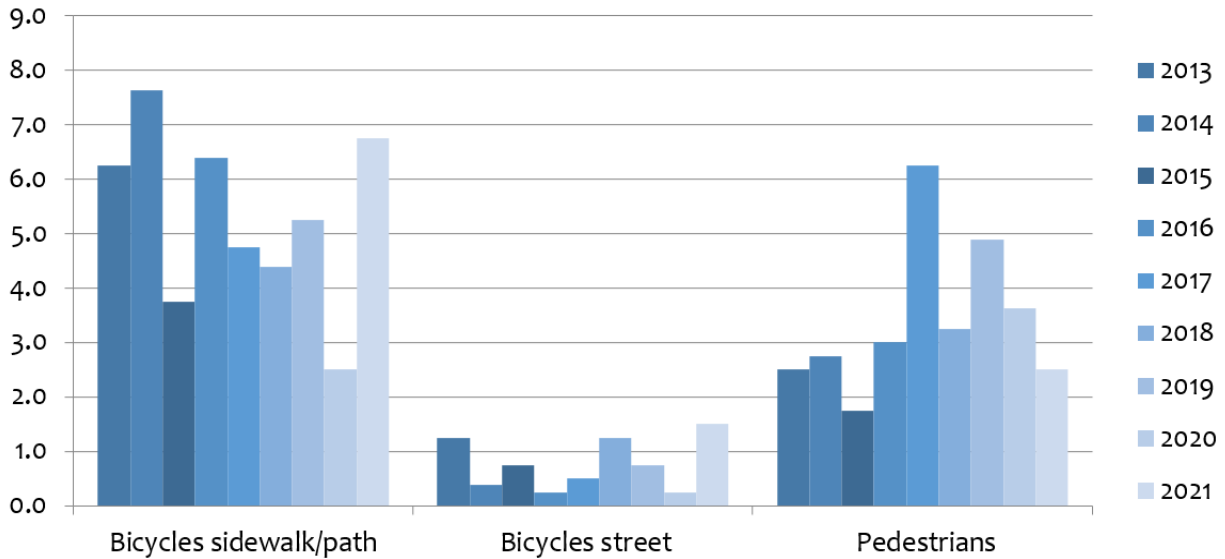
## Dilworth—7th St NE just north of 4th Ave NE (Average of years 2013-2021)



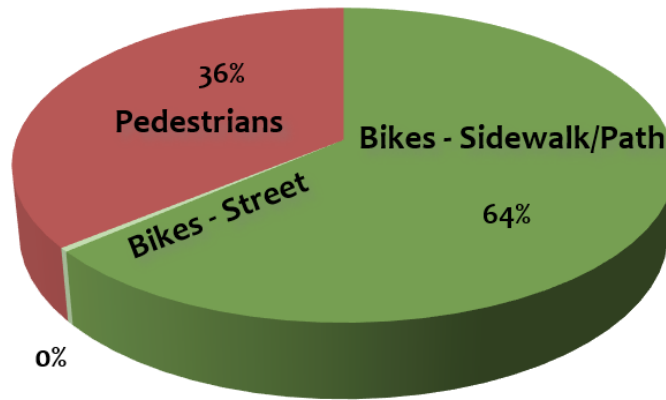
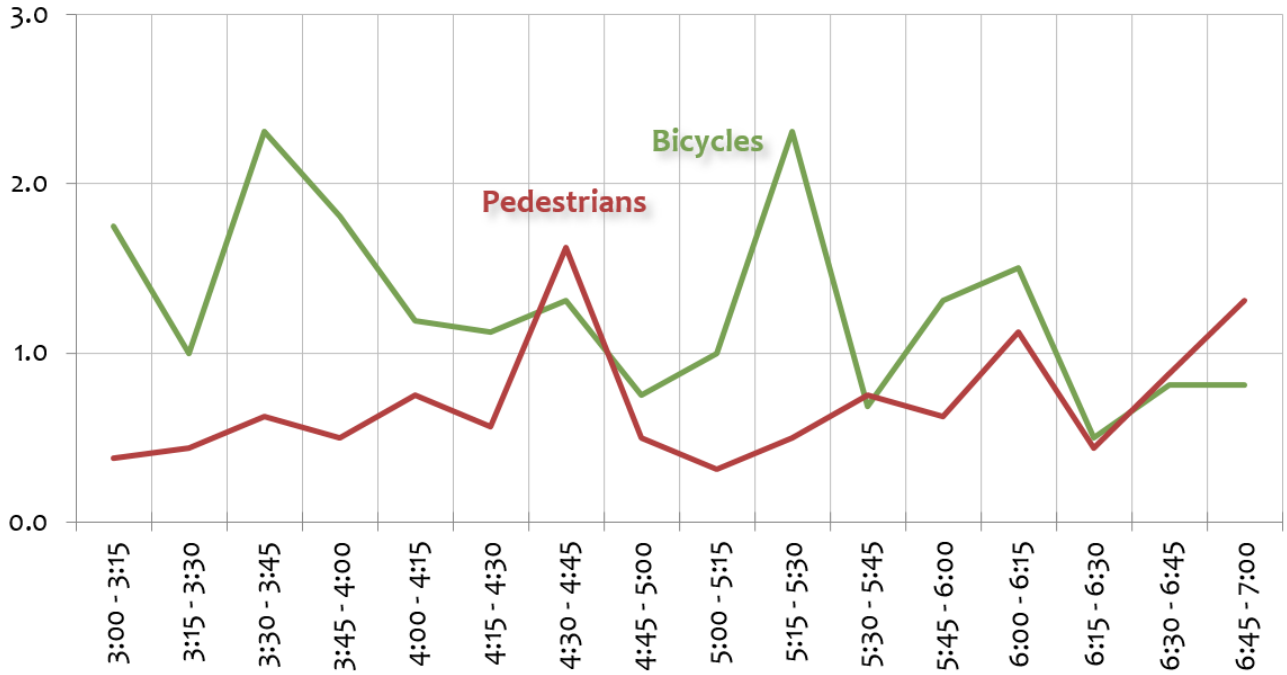
## Fargo—9th Ave S under I-29 (Average of years 2013-2021)



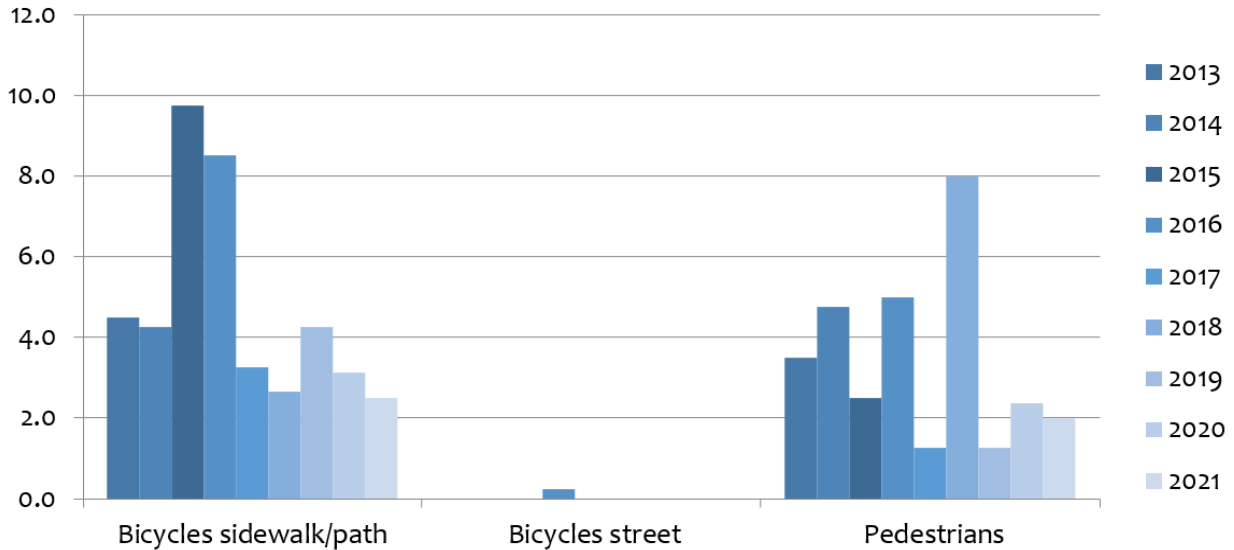
Counts per hour



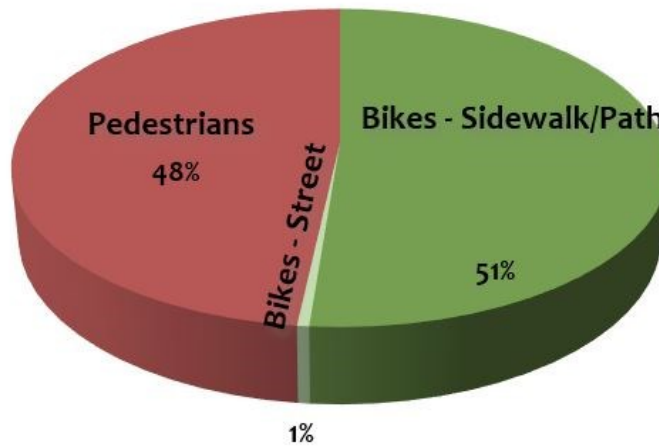
**Fargo—12th Ave N viaduct  
(between 19th St & 29th St)  
(Average of years 2013-2021)**



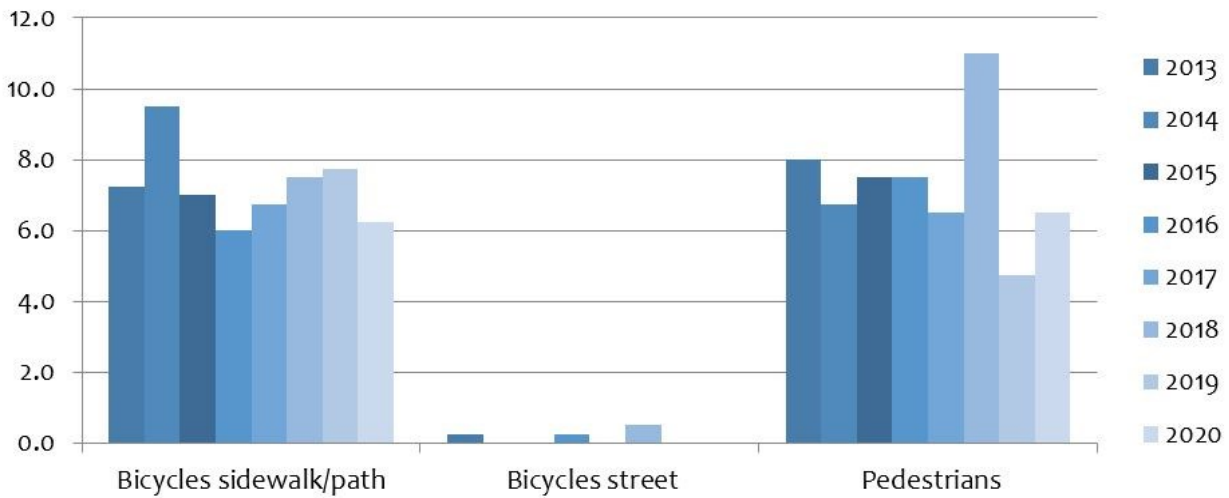
Counts per hour



## Fargo—13th Ave S under I-29 (Average of years 2013-2020)(no 2021 data)

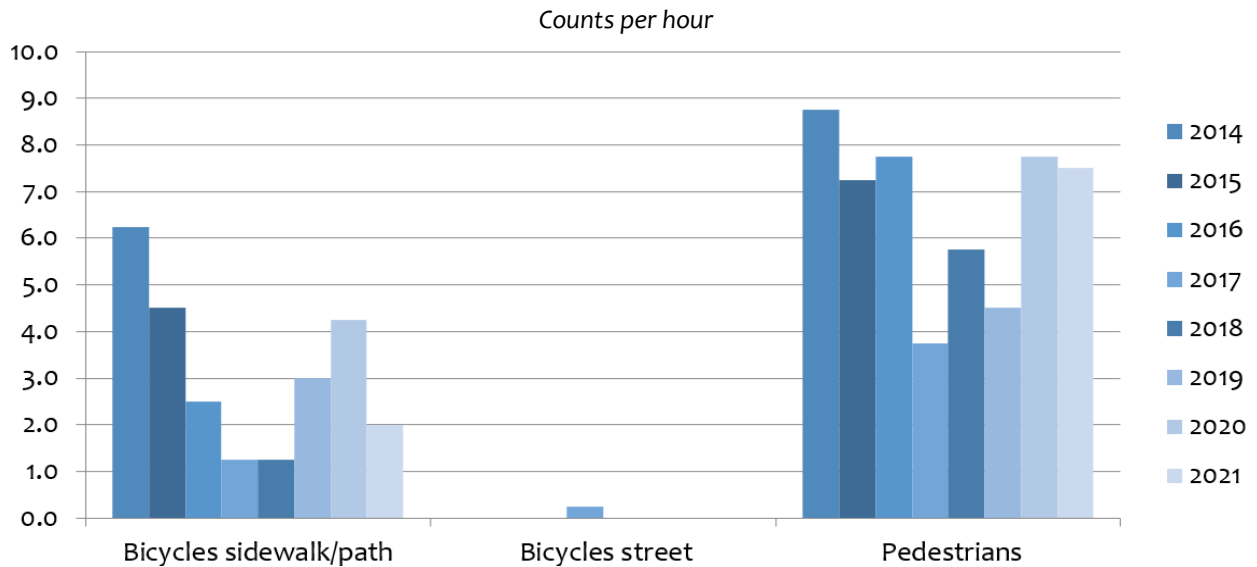
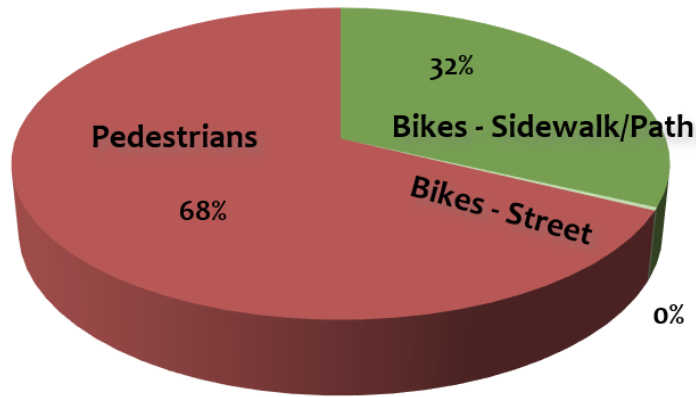
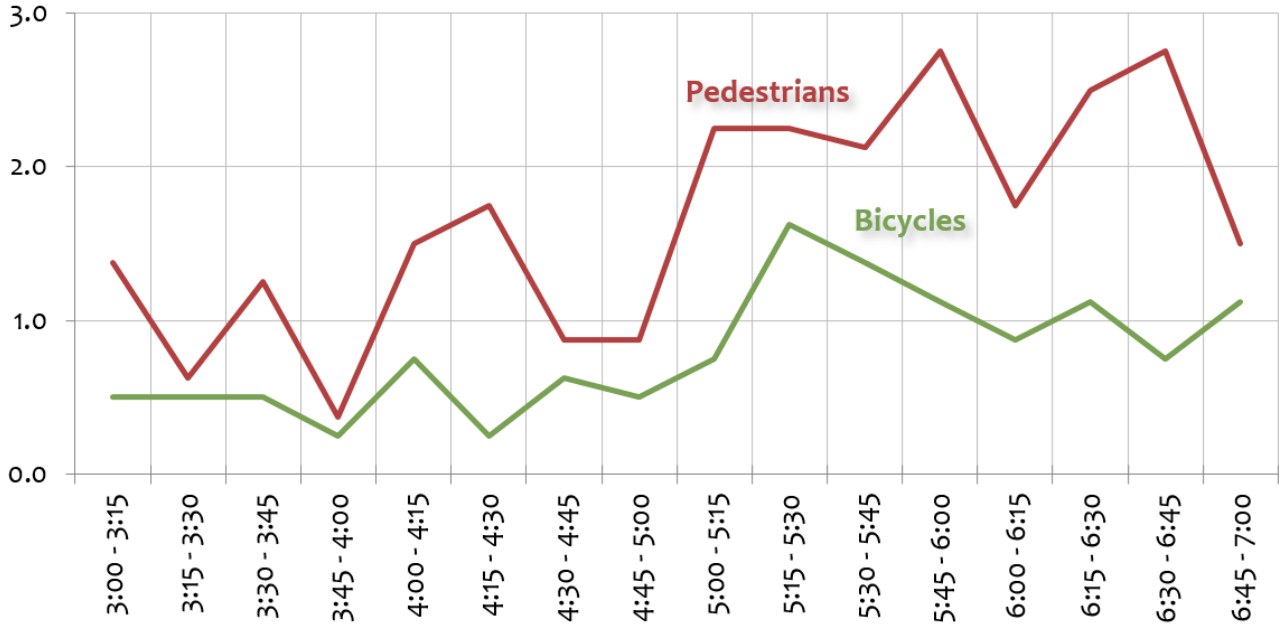


Counts per hour

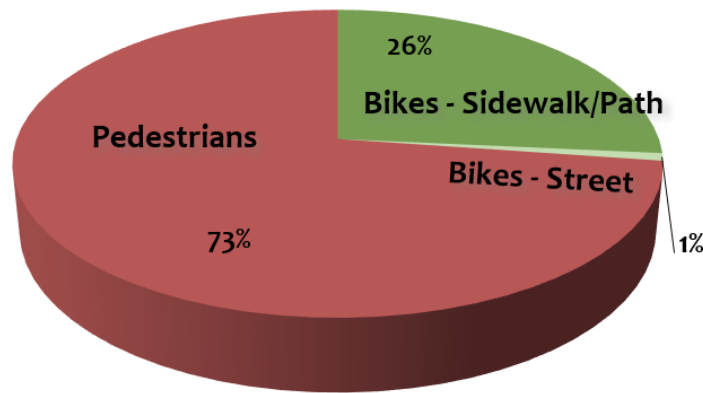
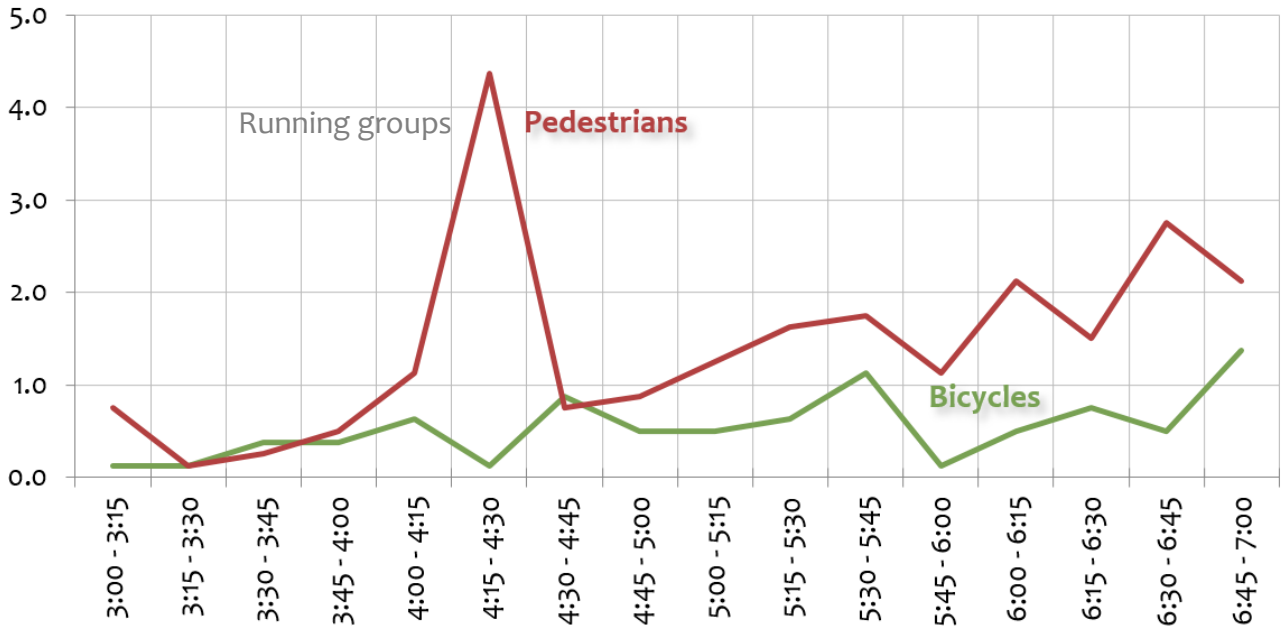




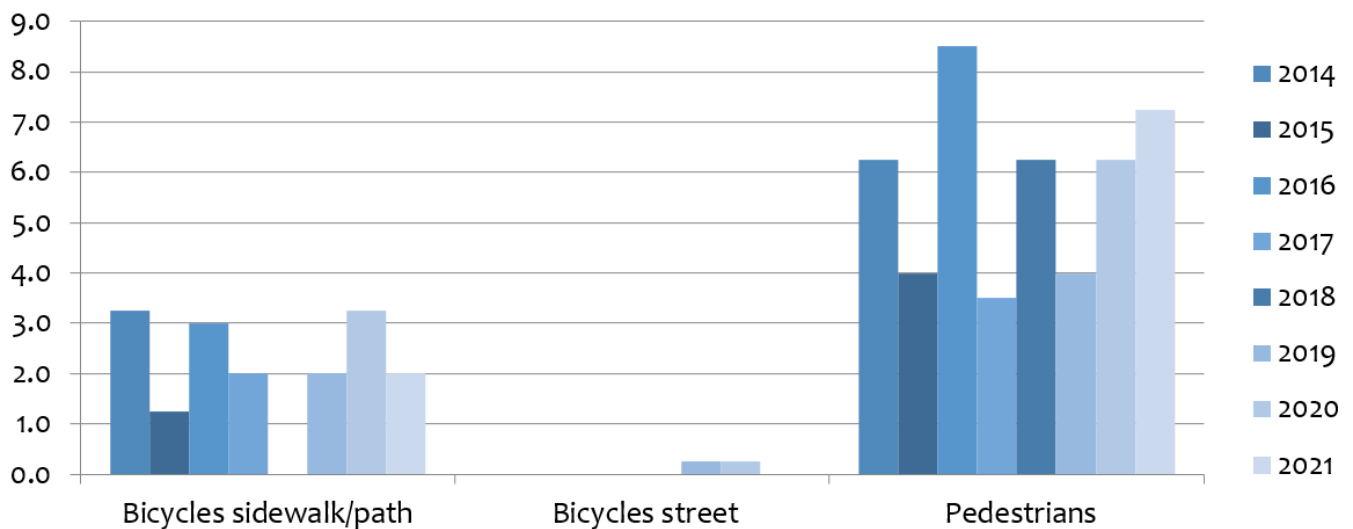
## Fargo—45th St just north of 40th Ave S (Average of years 2014-2021)



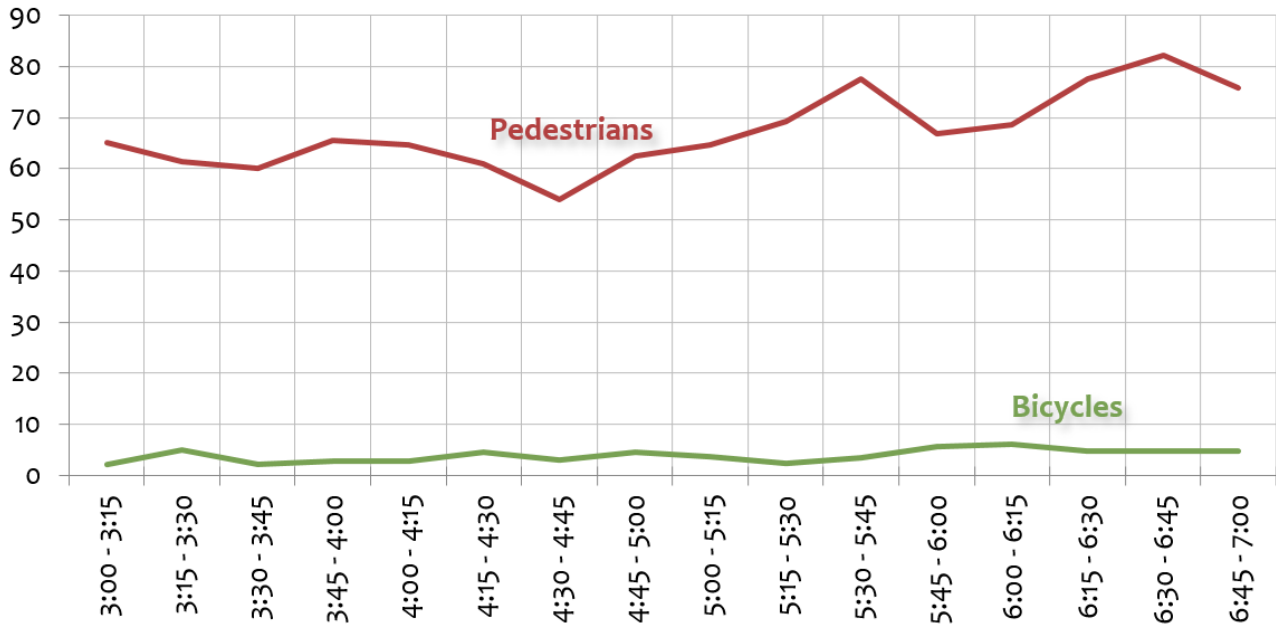
## Fargo—40th Ave S just east of 45th St (Average of years 2014-2021)



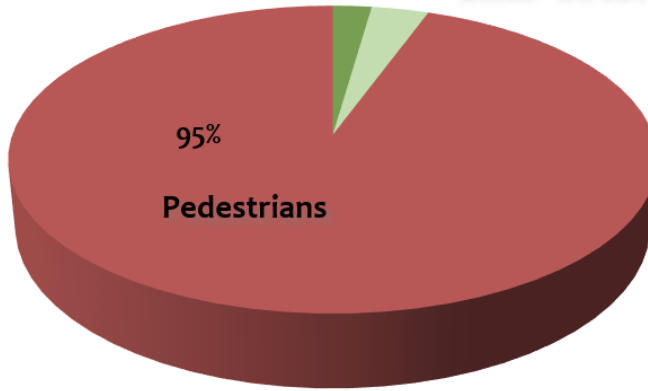
Counts per hour



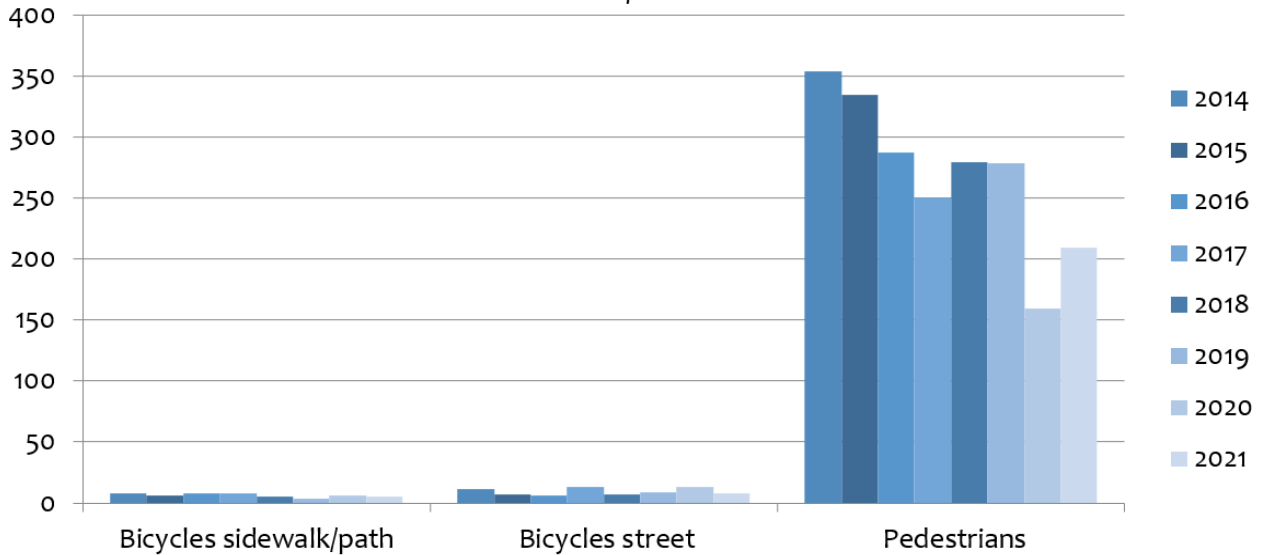
## Fargo—Broadway just south of 2nd Ave N (Average of years 2014-2021)



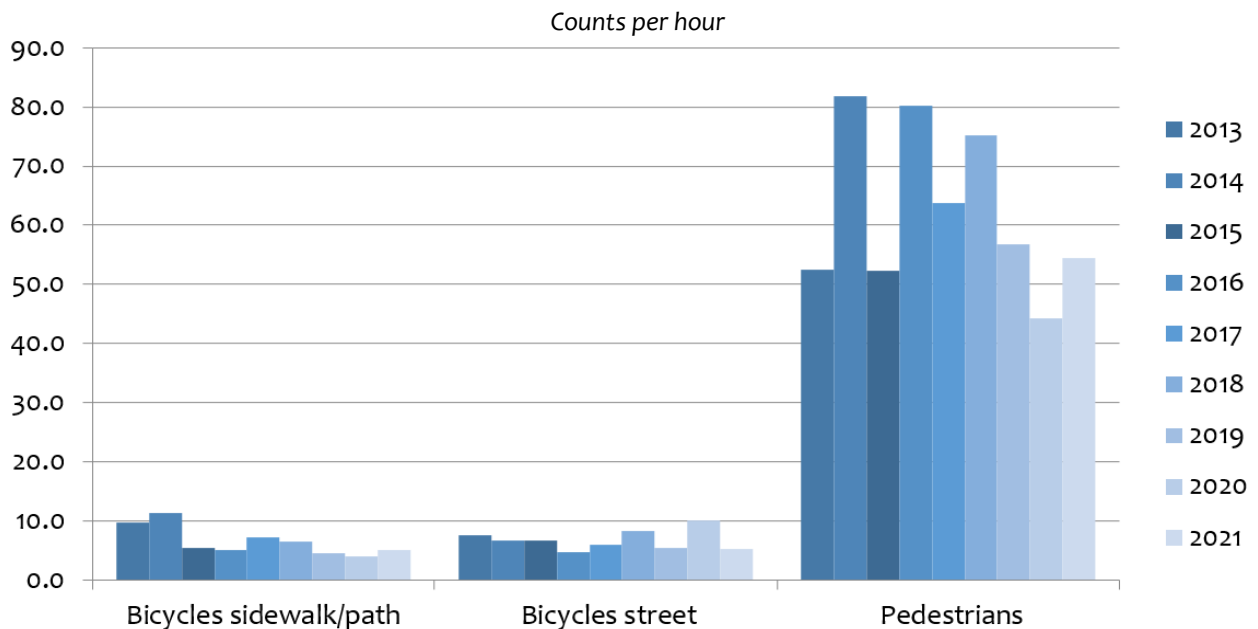
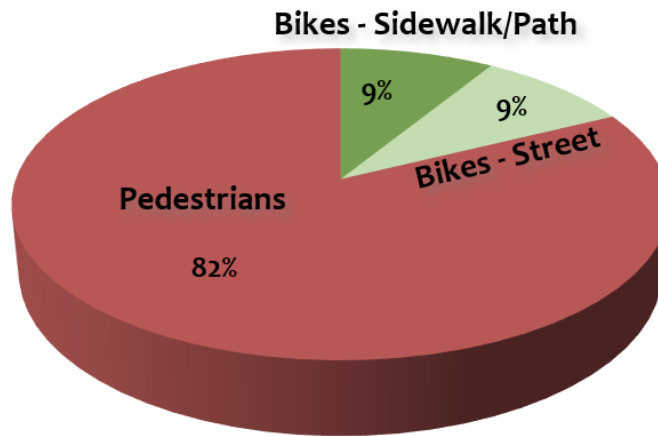
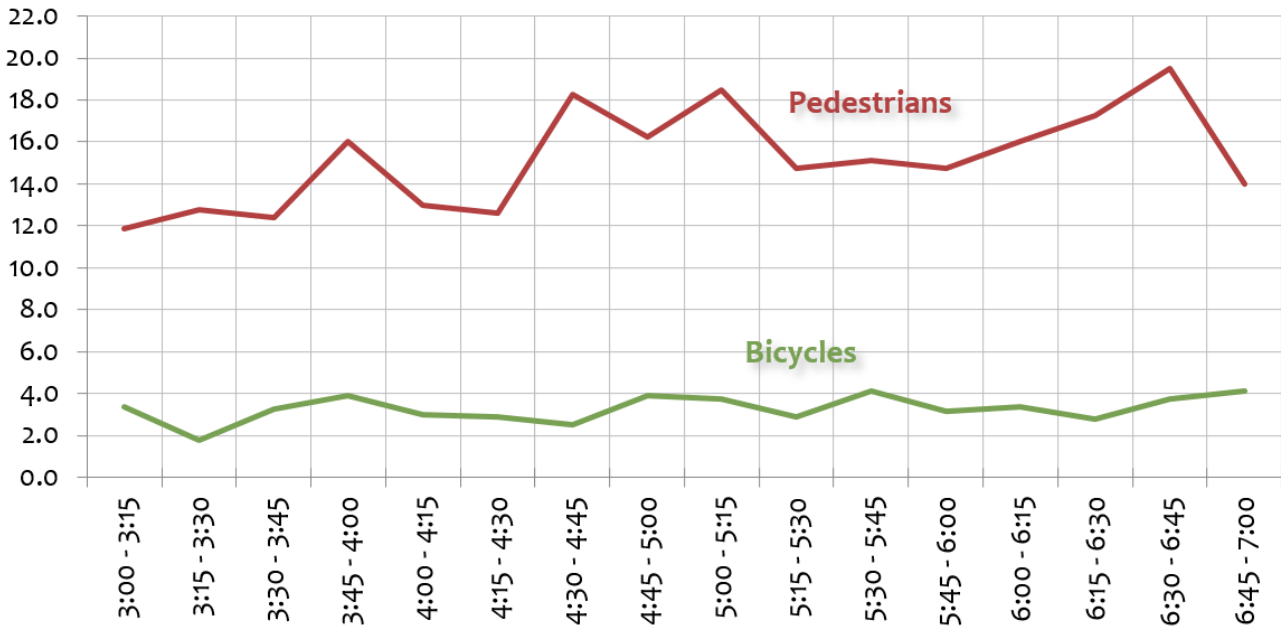
**Bikes - Sidewalk/Path 2%    3%    Bikes - Street**



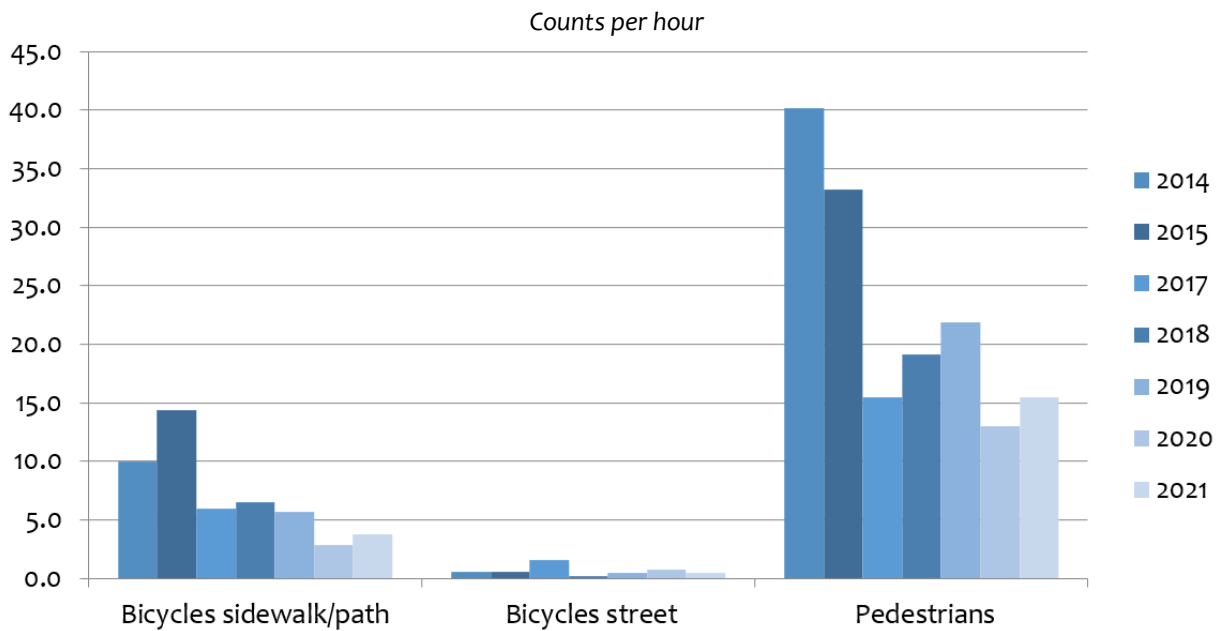
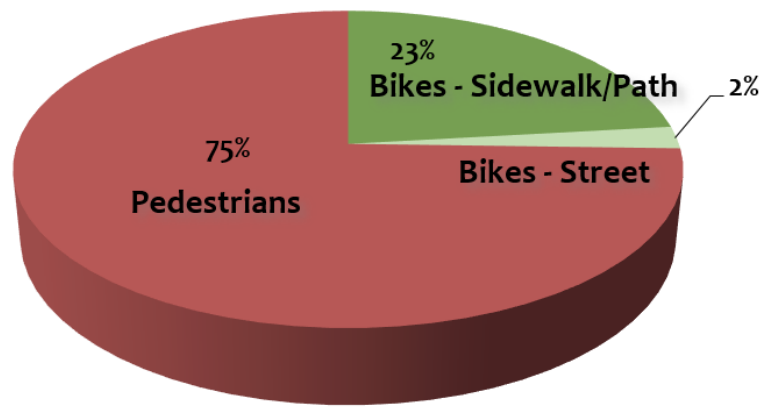
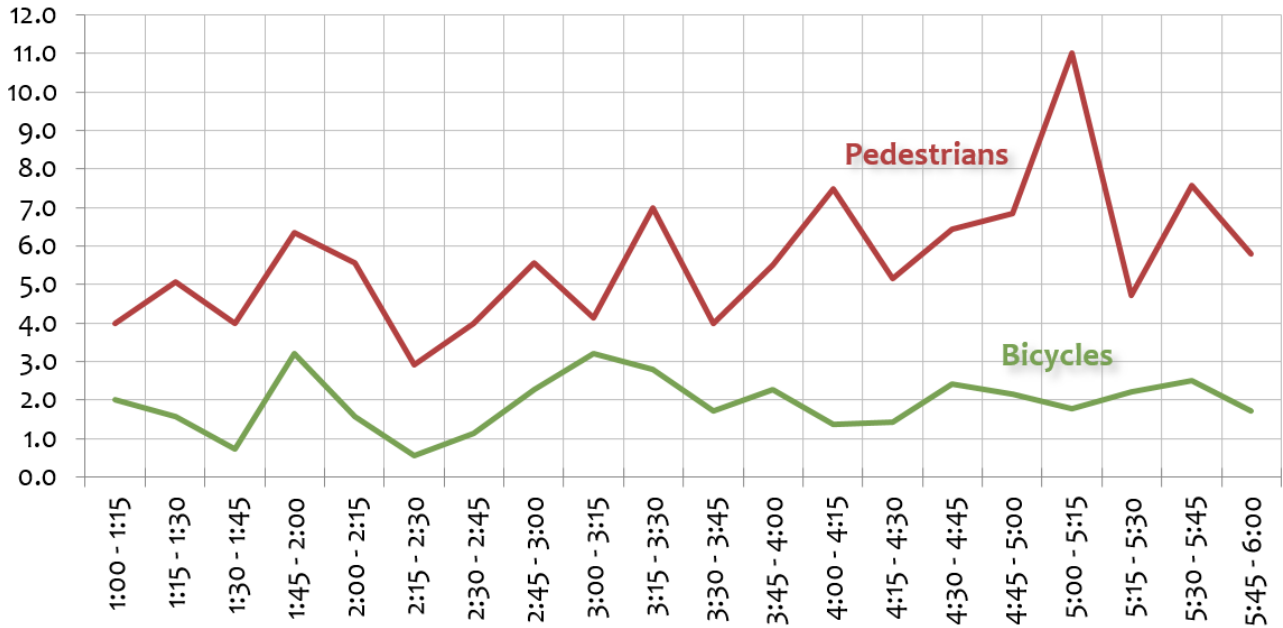
Counts per hour



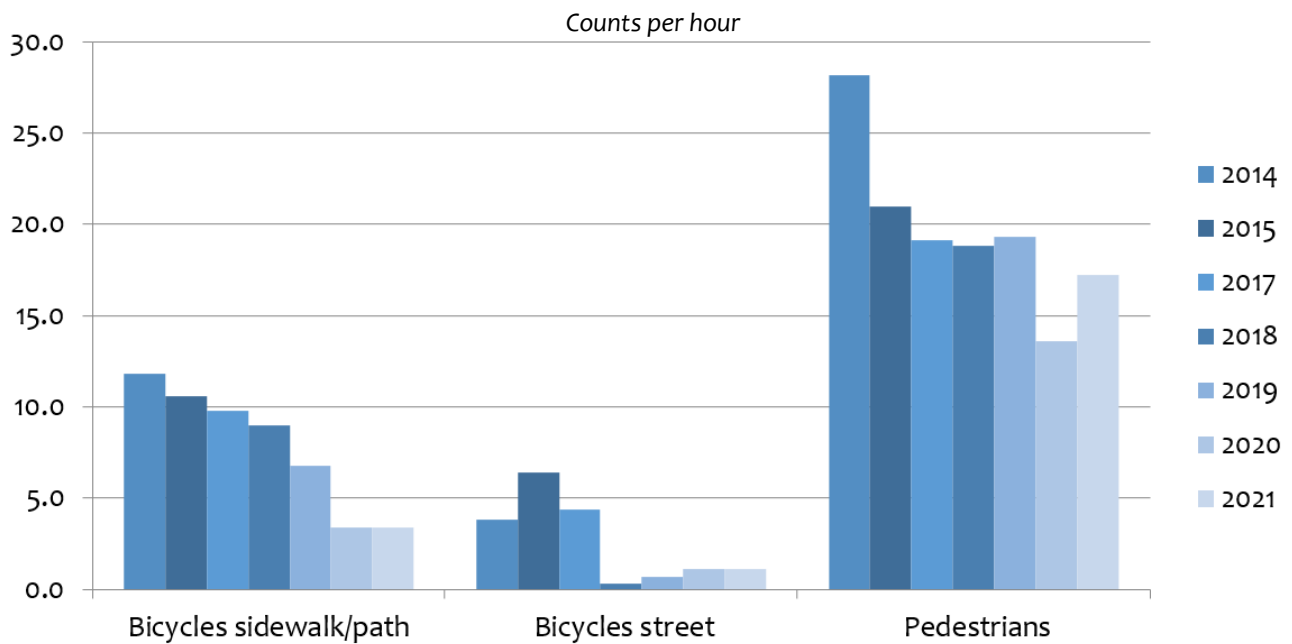
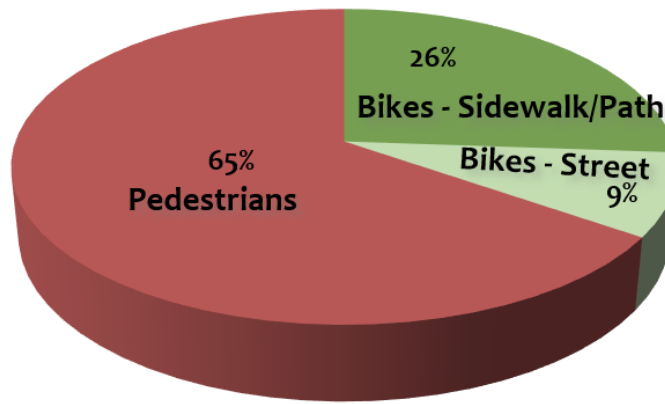
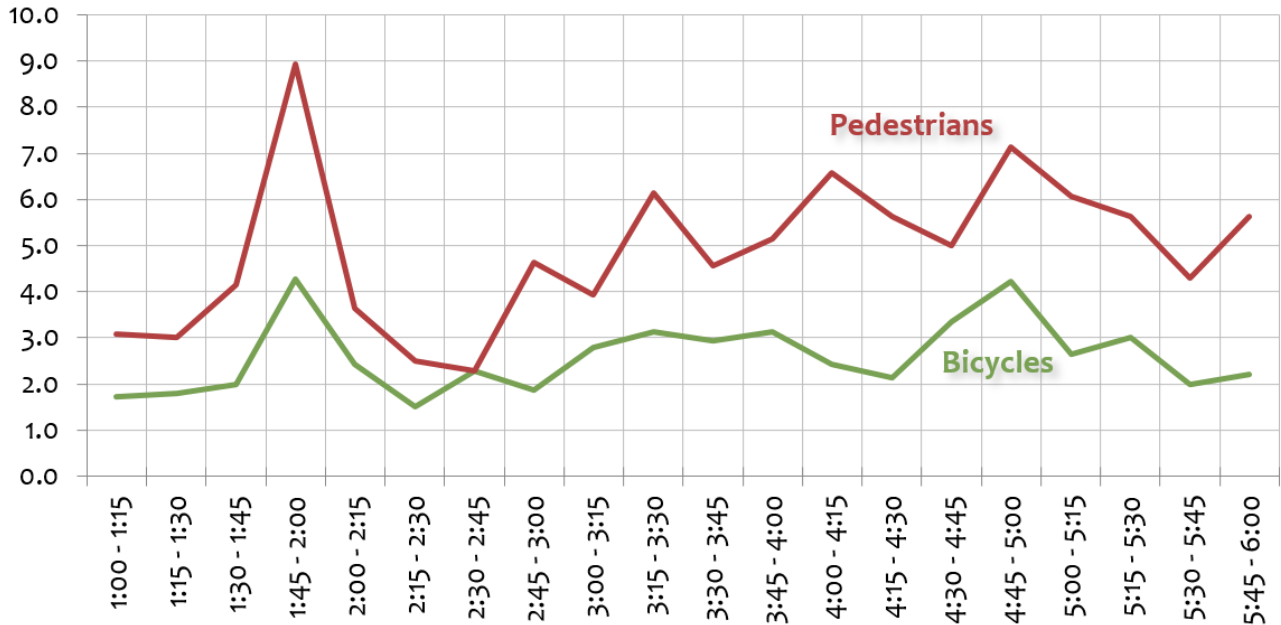
## Fargo—Broadway at RR tracks (between NP Ave & Main Ave) (Average of years 2013-2021)



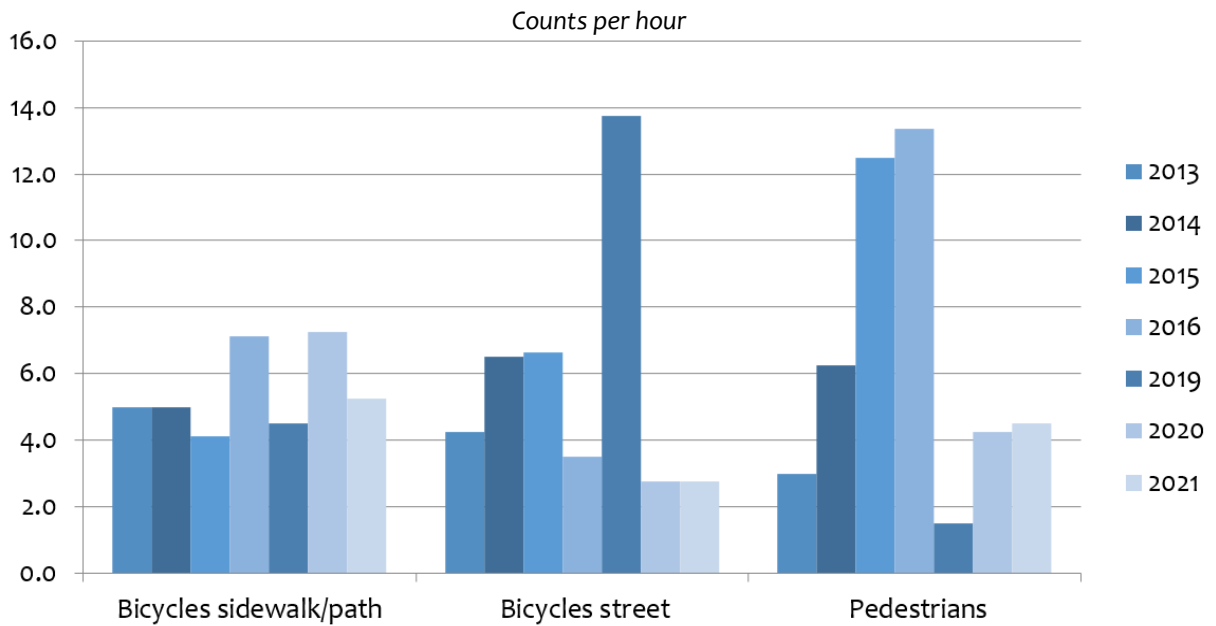
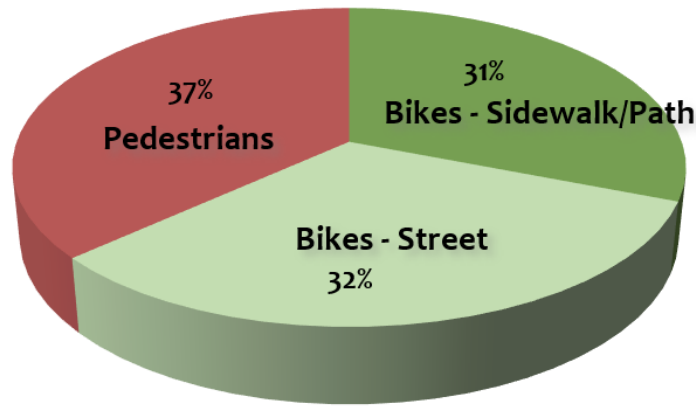
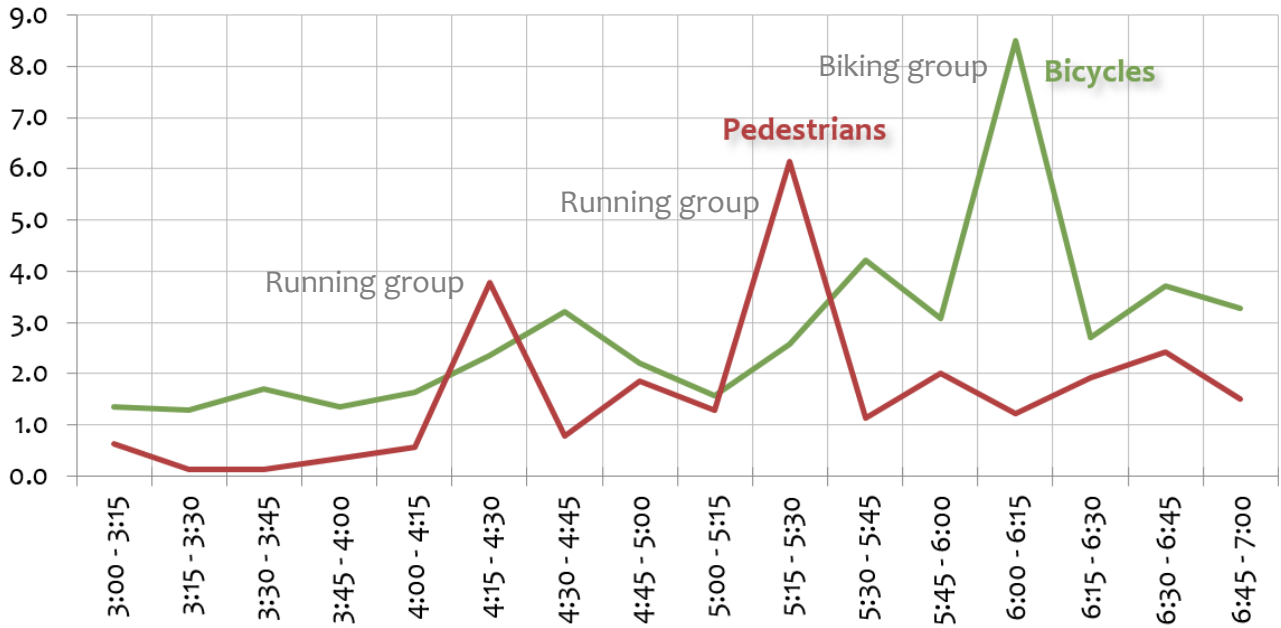
## Fargo—12th Ave N just west of University Dr. (Average of years 2014-2021)



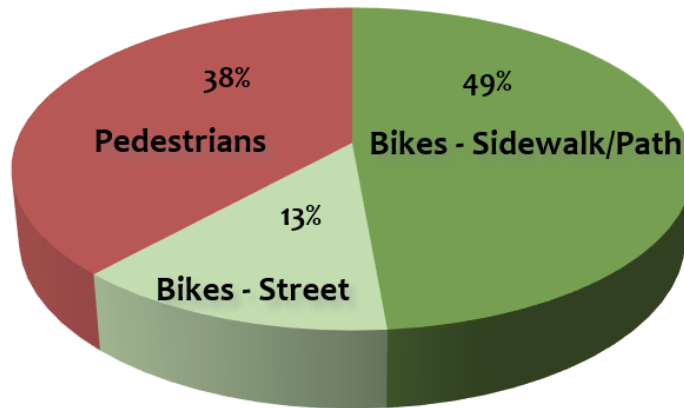
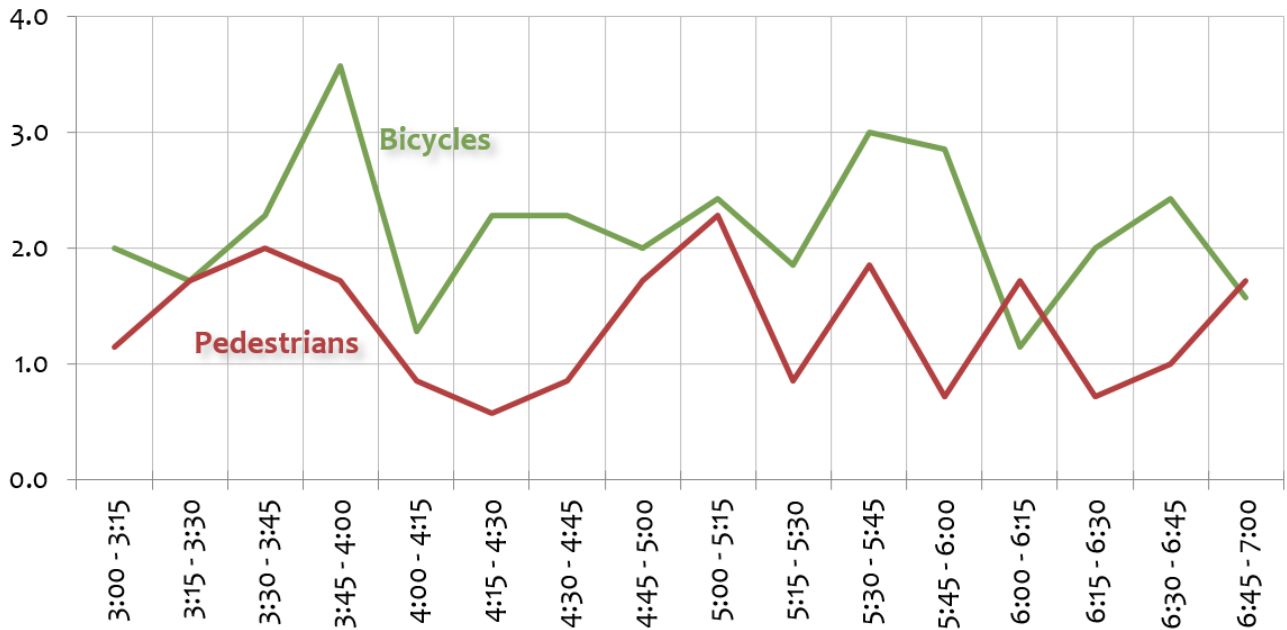
## Fargo—University Dr just north of 12th Ave N (Average of years 2014-2021)



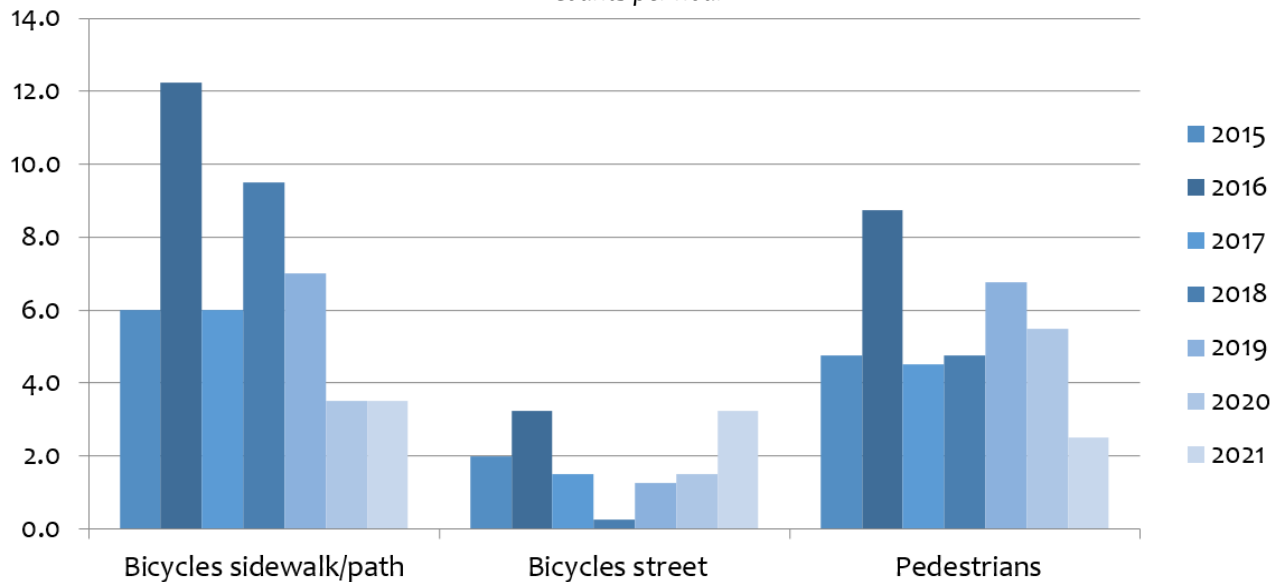
## Fargo/Moorhead—12th Ave N/15th Ave N Bridge over Red River (Average of years 2013-2021)



## Fargo/ Moorhead—NP Ave/Center Ave bridge over Red River (Average of years 2015-2021)

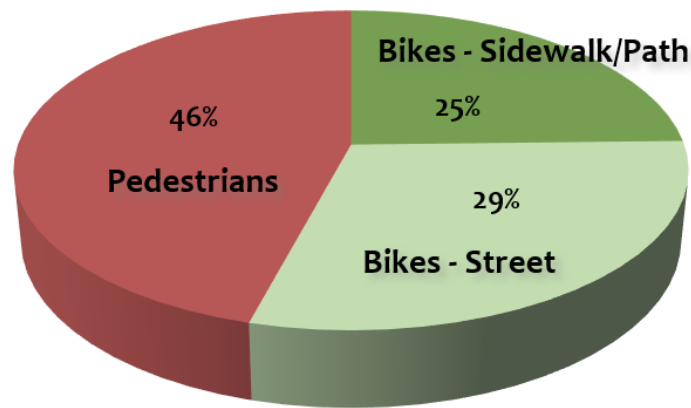
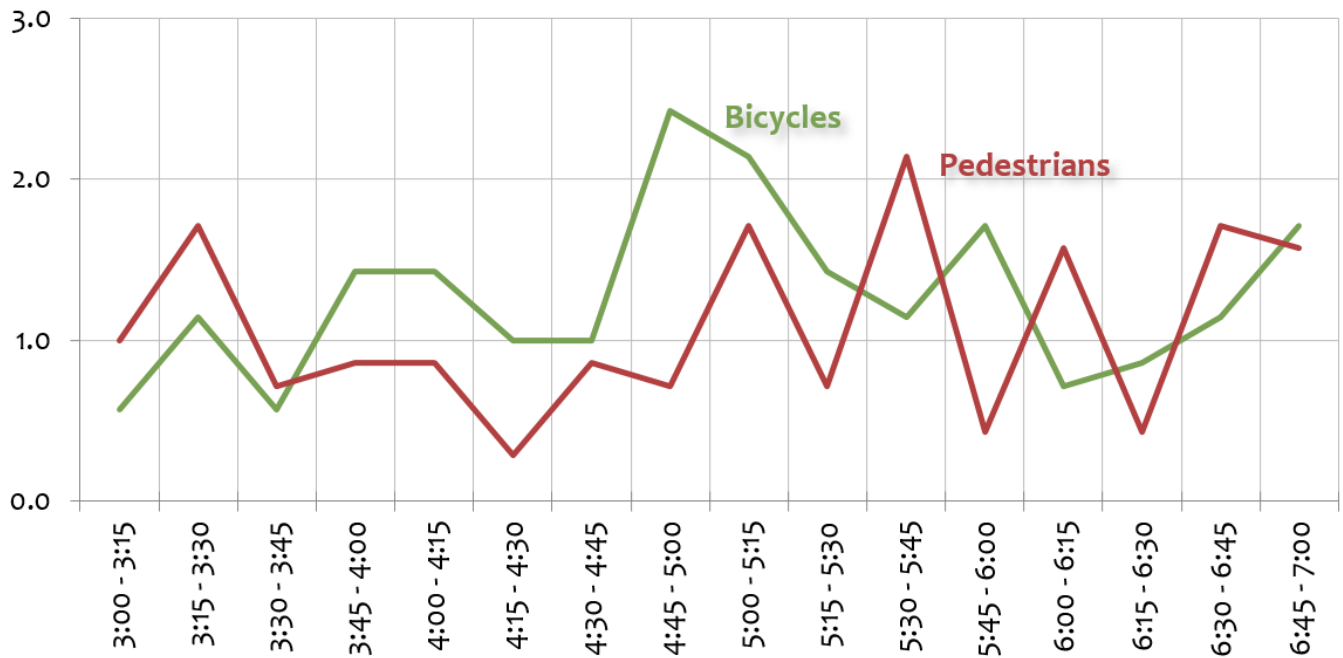


Counts per hour

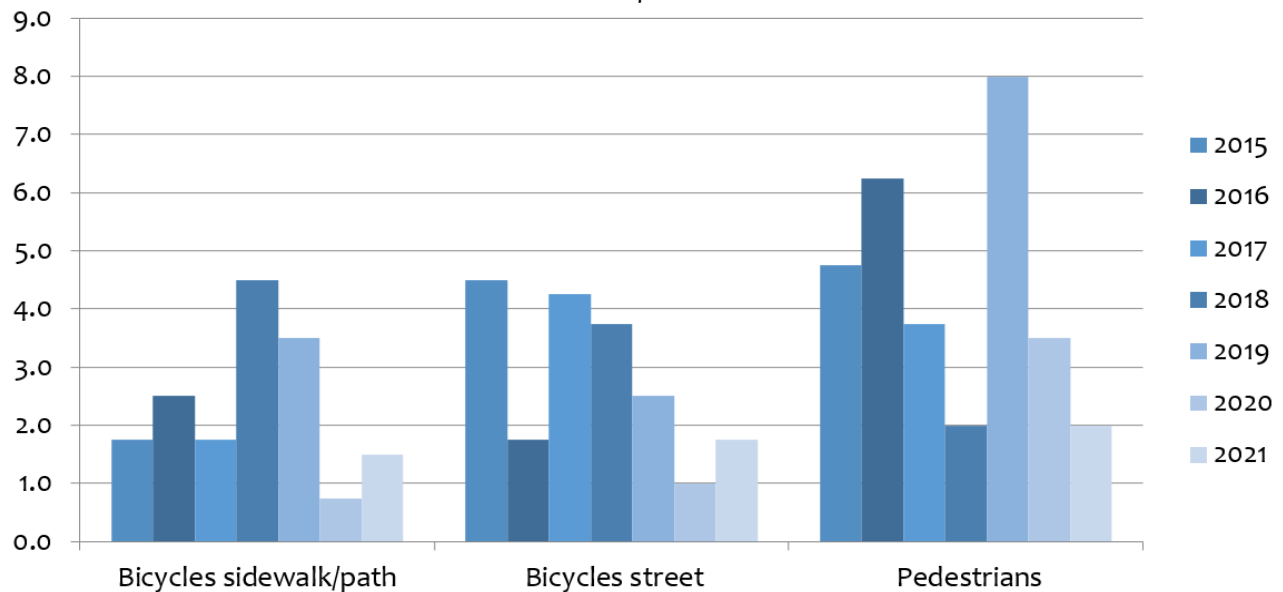




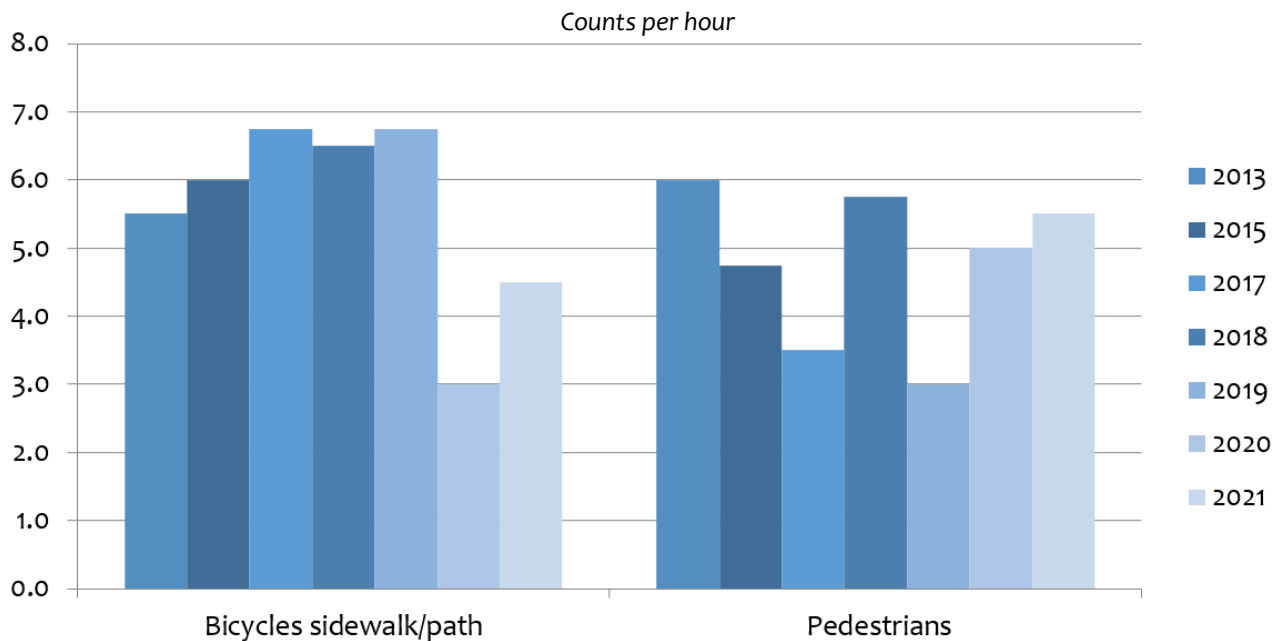
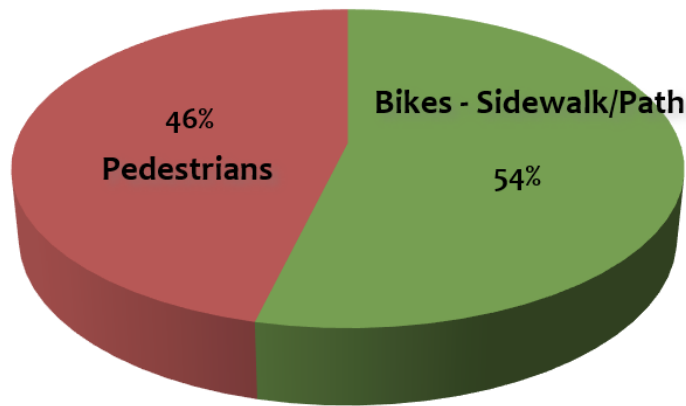
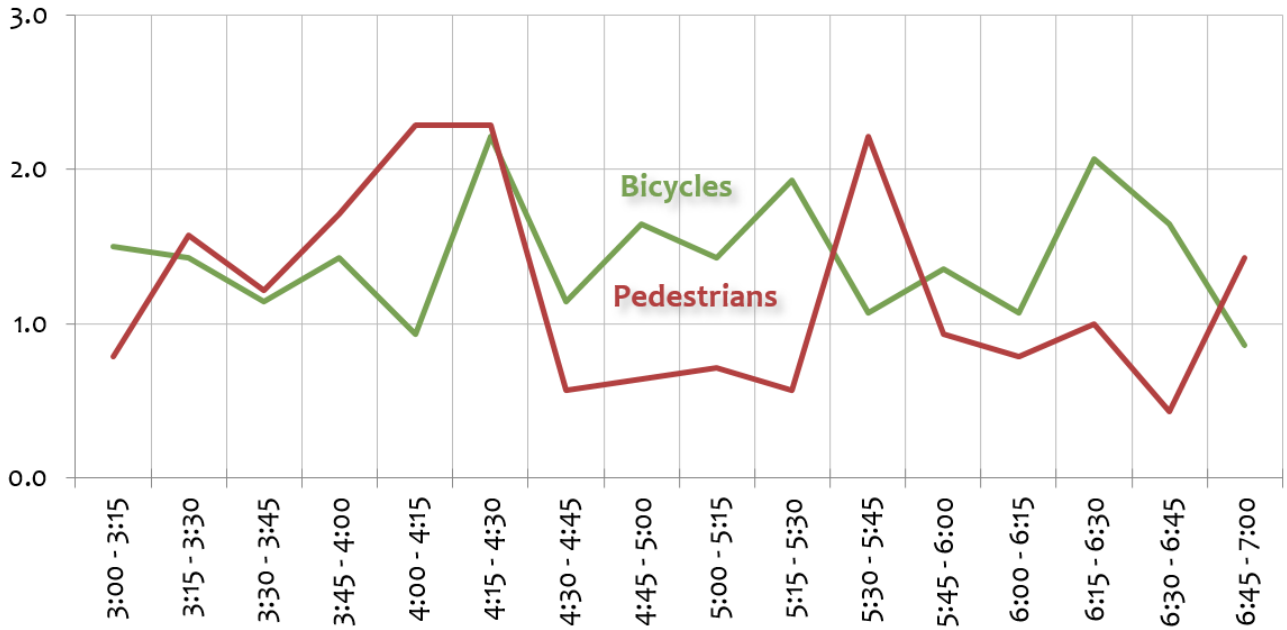
## Moorhead—4th St just south of Center Ave (Average of years 2015-2021)



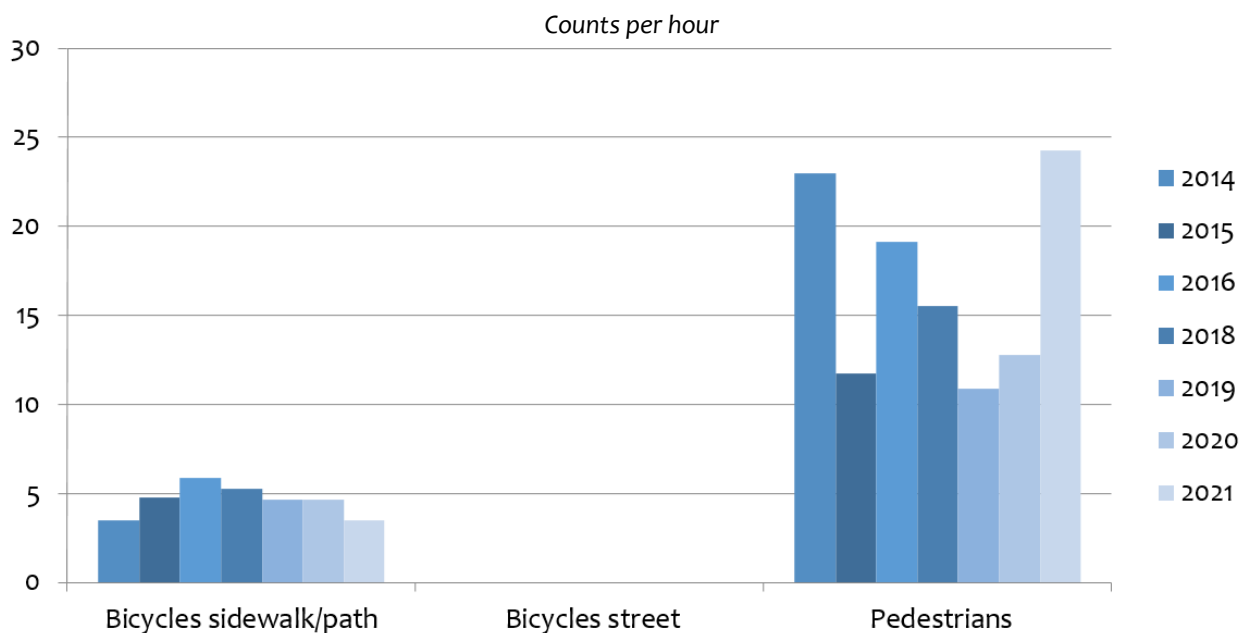
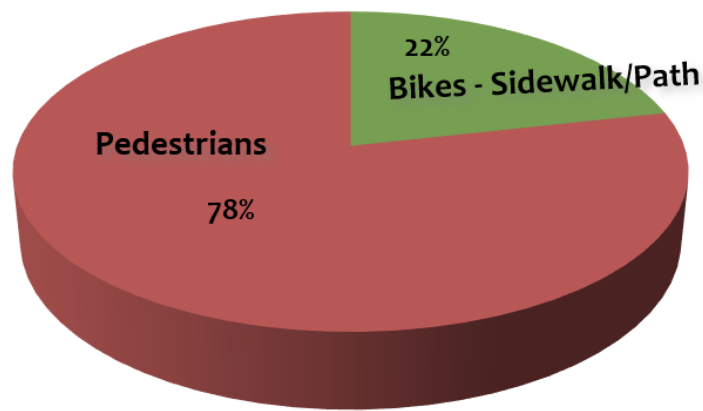
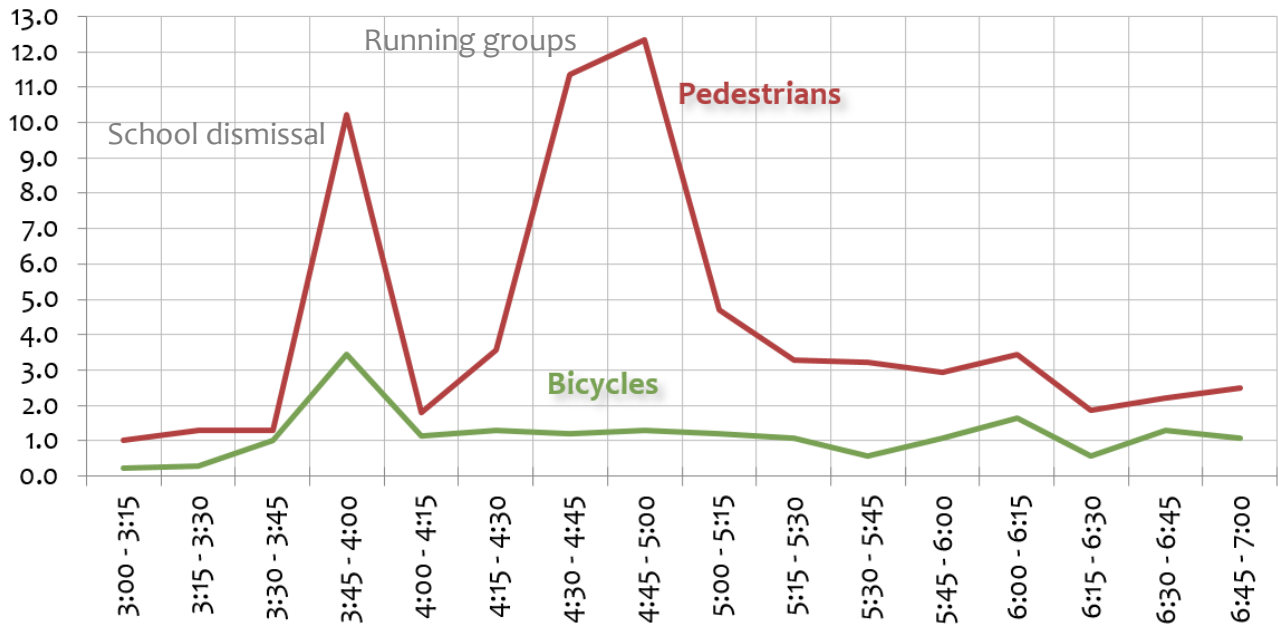
Counts per hour



## Moorhead—8th St over I-94 (Average of years 2013-2021)



## West Fargo—9th St just south of 17th Ave E (Average of years 2014-2021)



## West Fargo—17th Ave E just west of 9th St (Average of years 2014-2021)

