

The Heartland Trail Study

in Clay County



September 2024 | Phase 1 & 2 Engagement Summary

Community Engagement | Overview

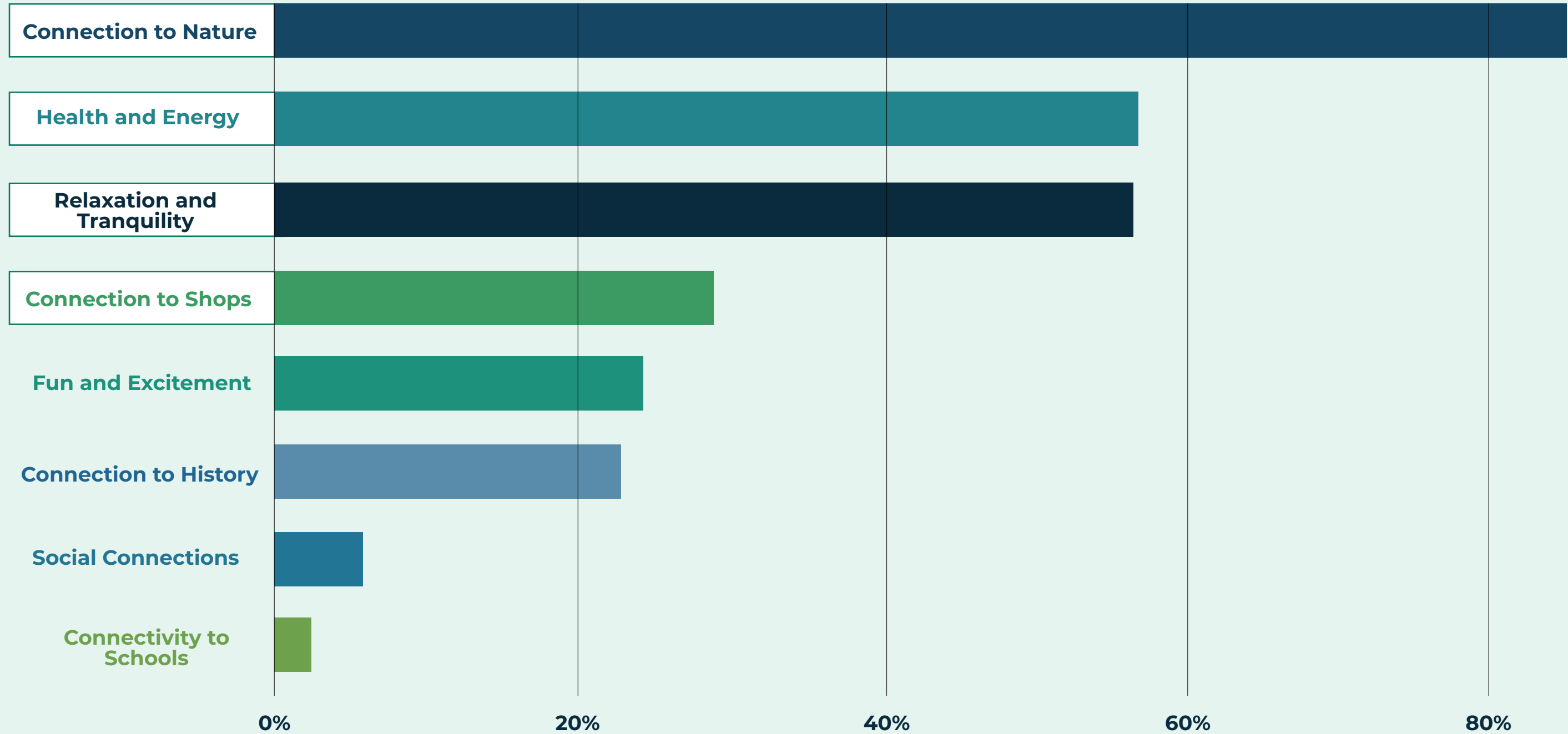


Online Engagement Totals:

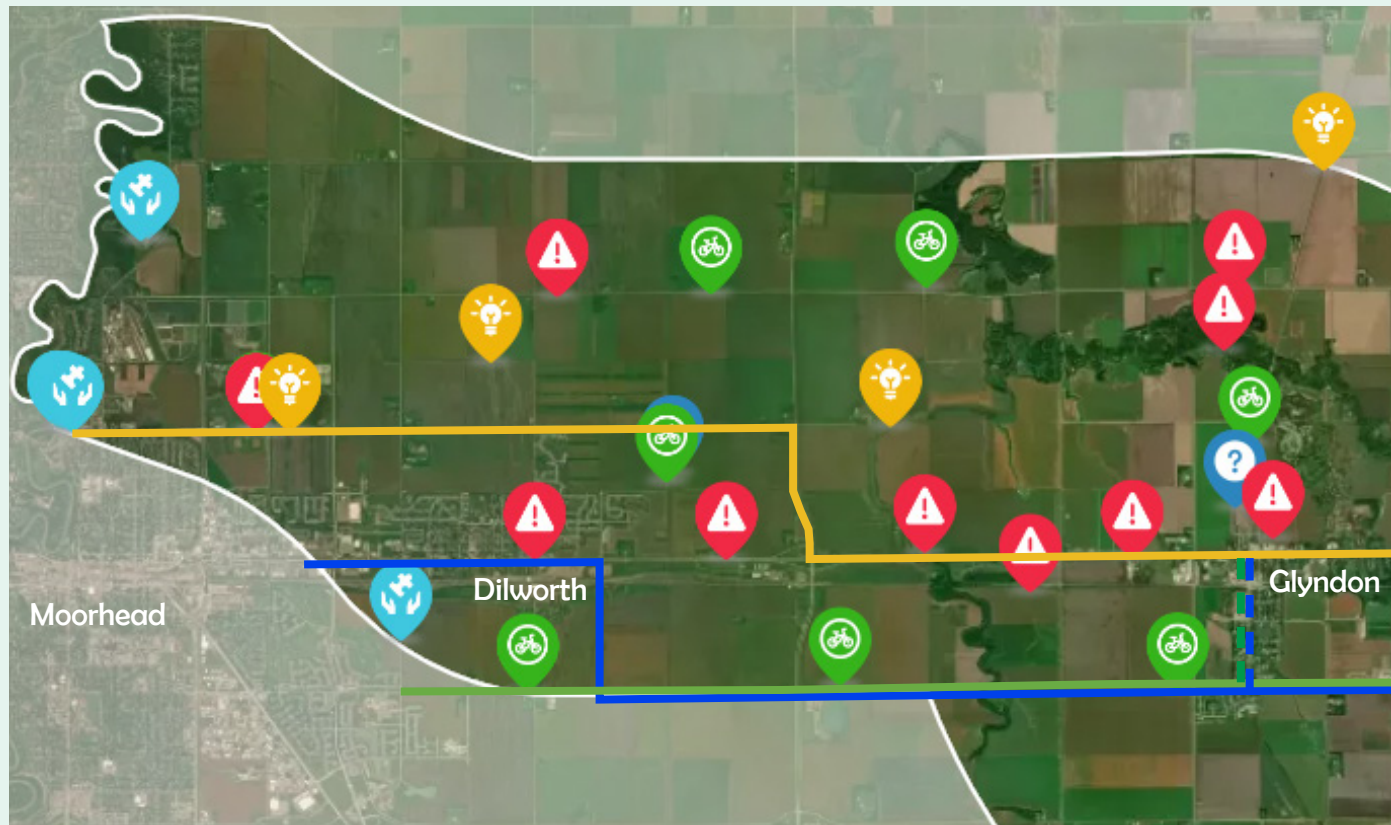
2,477 website visits
1,810 total visitors
436 Contributions
351 Contributors

Community Engagement | Overview

Q: What would you like to experience when using the Heartland Trail? | 213 Contributions



Western Segment Mapping | General Comments



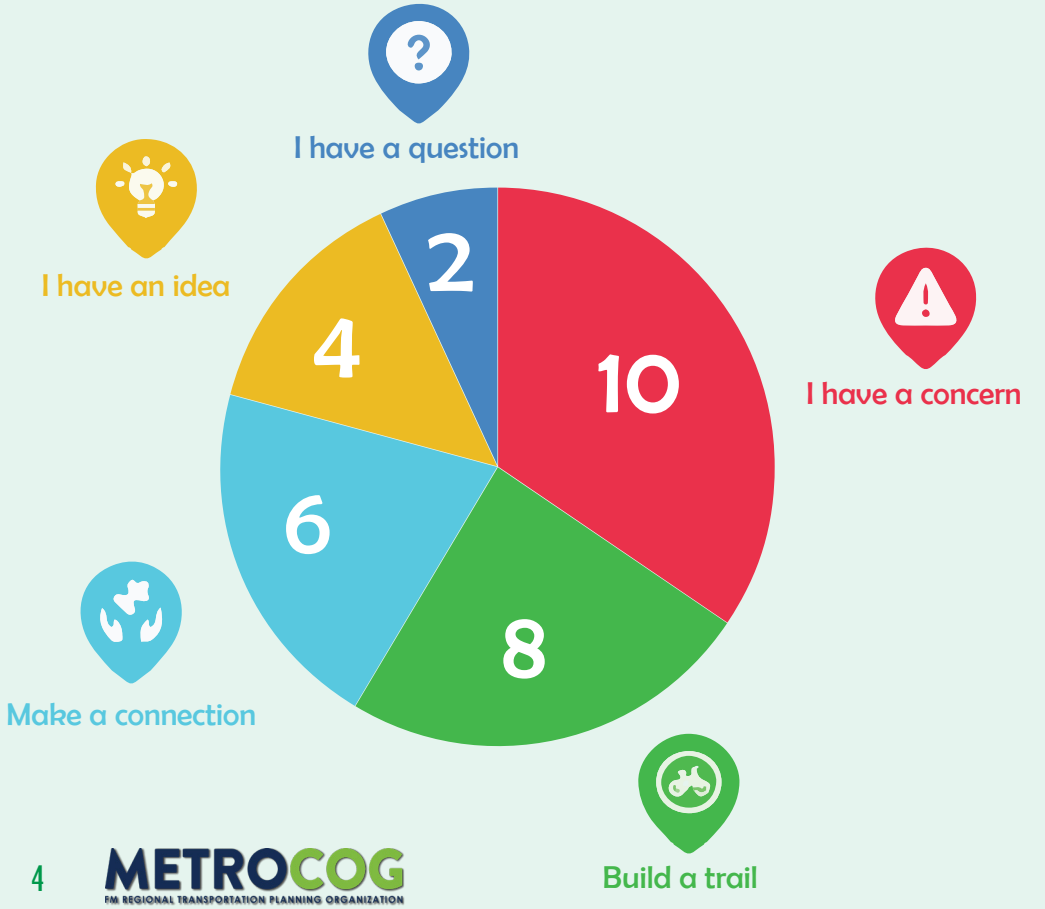
“Following Highway 10 is not ideal. The fewer cars I hear, the better.” 👍 18 upvotes

“...staying away from the highway would be preferred even if only on by a tree line...” 👍 16 upvotes

The Straight Shot | 7%

The Rivers and Forest | 77% ★

The Town Connector | 16%



“Consider connecting to the center of Moorhead where the most people will be able to access [the trail]” 👍 10 upvotes

“Moorhead’s soon-to-be-revitalized downtown would be a great destination for people touring on this route...and the proposed northern route that ends at 15th Ave is a really good way to get there.” 👍 6 upvotes 🗑️ 2 downvotes


West Central Segment Mapping | General Comments





The Straight Shot | 5%

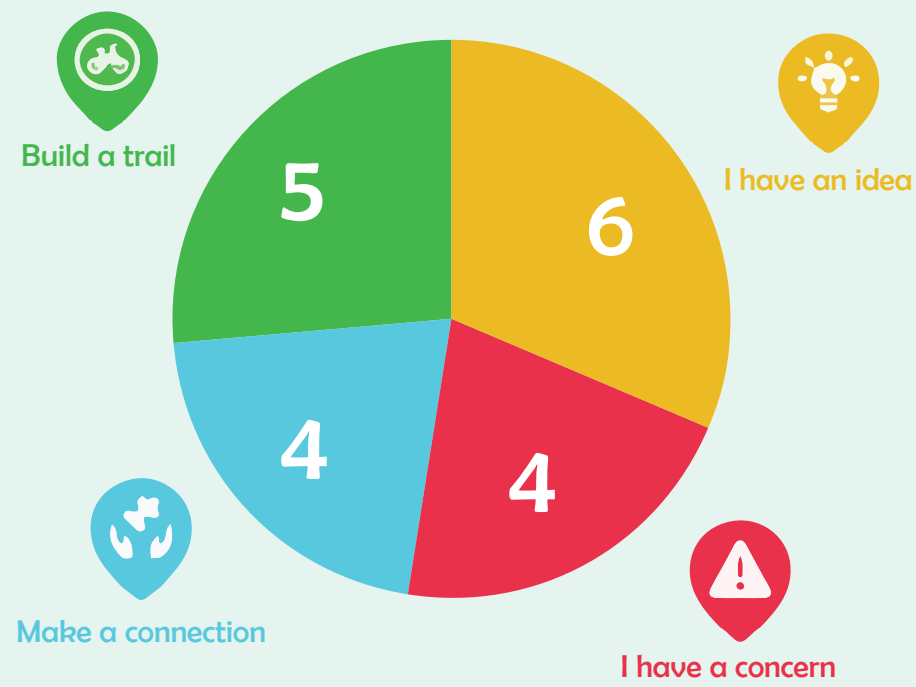
The Rivers and Forest | 85% 

The Town Connector | 10%

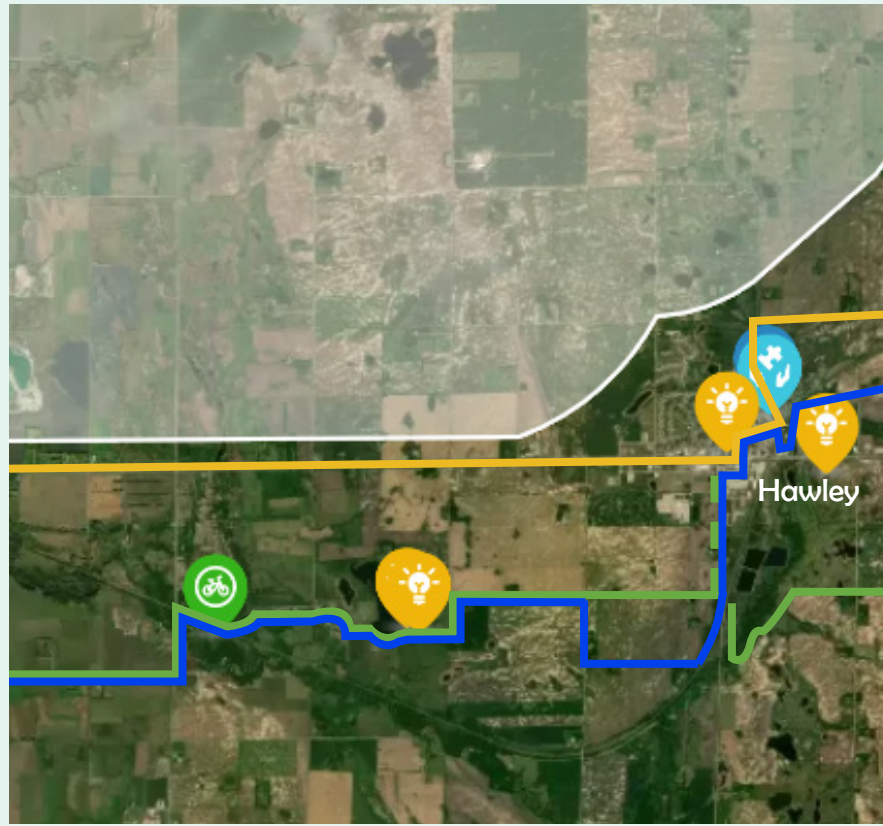
“Having a trail from Moorhead to Buffalo State Park would be fantastic!!”  15 upvotes
 “It would be amazing to have the trail connected to Buffalo State Park for bike and camping.”  8 upvotes

“Could a sister trail be built along the old railroad alignment to connect Glyndon to Downer & Barnesville?”  2 upvotes

There should be a clear distinction between hikers and bikers, especially since there are a lot of people who enjoy slowly exploring the park along those trails...”  7 upvotes




East-Central Segment Mapping | General Comments




The Straight Shot | 5%

The Town Connector | 19%

The Rivers and Forest | 76% 

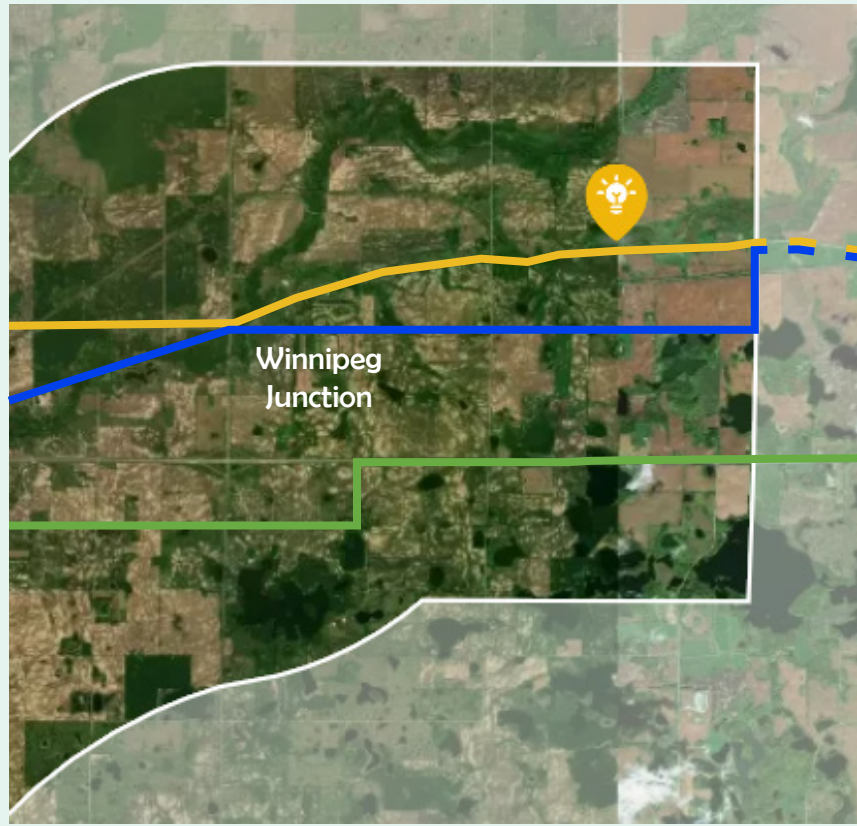
“Would be nice to have access to water fill stations in each city crossing.”  5 upvotes

“This lake has the potential to be a scenic, valuable entity for the Heartland trail. I love when trails cross by lakes and rivers; it makes the journey more enjoyable and less utilitarian.”  11 upvotes

Nice to have [the trail] go along Main Street, but are you just routing people on the road? If so, are you going to add ways to slow down cars along this route...”  1 upvote



Eastern Segment Mapping | General Comments



The Straight Shot | 7%

The Town Connector | 35%

The Rivers and Forest | 58%

★ Based on conversations with community members at the July 16th open house, there is a desire to “flip” the green and blue lines to connect to Hawley and the scenic nature of the blue segment.

“How about a different name for the trail? “Heartland” could literally be any place in the United States, that’s very generic and doesn’t say anything unique about us.”

👍 5 upvotes 🗑️ 3 downvotes



I have an idea

1

Trail Type Preference

Generally, people really liked these types of trails:



👍 Trail along a lakeshore



👍 Trail along a wetland



👍 Trail along a boardwalk



👍 Trail along a county road

Generally, people do not like these types of trails:



👎 Trail adjacent to HWY 10



👎 Trail between HWY 10 & local street



👎 Trail along a county road with curb



👎 Trail along a highway

Trail Type Preference

Generally, people really like these trail amenities:



👍 A rest stop



👍 Trailhead parking



👍 An overpass



👍 An underpass