

OLMSTED COUNTY  
MINNESOTA

# Olmsted County Minnesota Growth Management

---

Allison Sosa, Executive Director  
Jarrett Hubbard, Community Planning Manager

# Allison Sosa

Associate Director of Olmsted County Planning; and  
ROCOG Executive Director

- Rochester Community Development
- Olmsted County Planning
- Binghamton, New York, Corporation Counsel

## Fun Facts

- East Coast; Binghamton and Albany, NY
- Favorite Color is **Purple**
- Favorite Ice Cream is Flapdoodles Butter Pecan



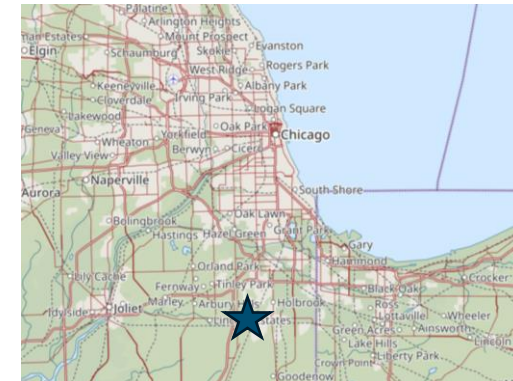
# Jarrett Hubbard

## Community Planning Manager

- Rochester Destination Medical Center Project Manager
- Scott County, MN Public Works
- Saint Cloud APO

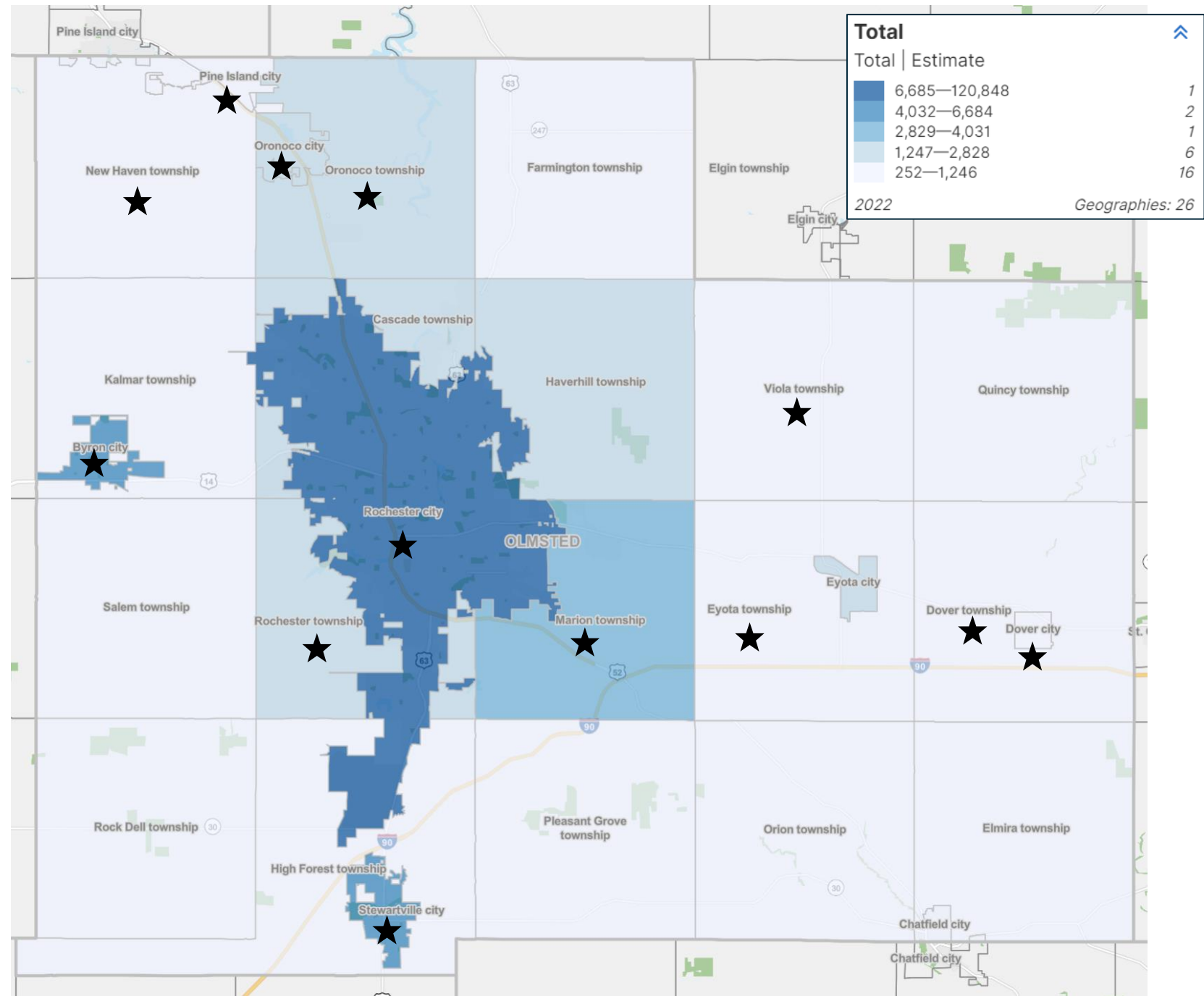
### Fun Facts:

- South Suburban Chicago Land
- Former Triathlete
- Grew-up raising peacocks



# Olmsted County Information

- 165,000 Residents
- Mayo Clinic
- 18 Townships
- 8 Cities
- Consistent Growth





## What is DMC?

- + • Destination Medical Center (DMC) is a 20-year economic development initiative
  - Creating a global destination for health and wellness
  - Includes \$5.6 billion Public- Private Partnership Investment.

# Investment



**BOLD.  
FORWARD**



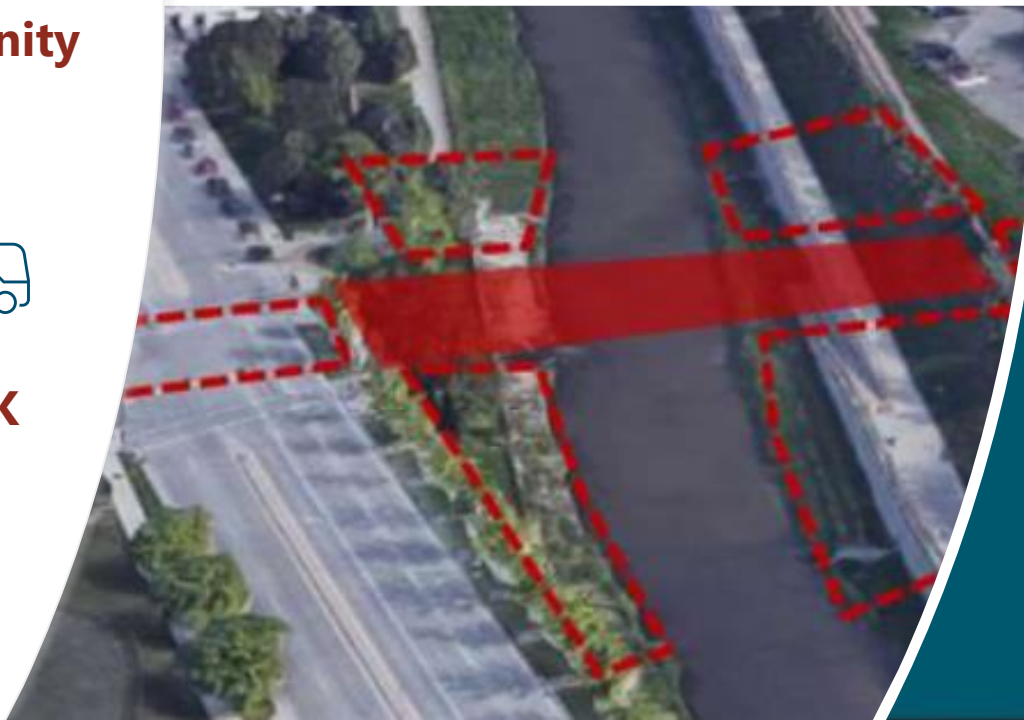
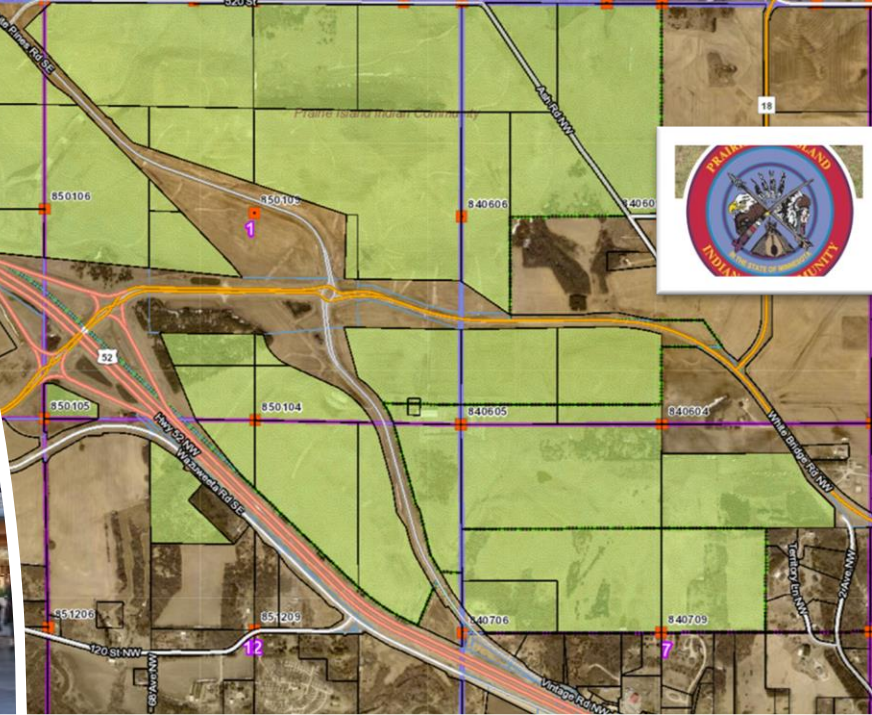
**Prairie Island  
Community**



**6<sup>th</sup> Street  
Bridge**



**LINK**



An architectural rendering of a modern hospital complex at dusk. The scene features two large, multi-story glass buildings with curved facades. A prominent skyway with a glass railing connects the two buildings. The sky is a deep blue, and the building interiors are lit up, showing people and greenery. In the foreground, there is a street with a few cars and pedestrians. The text 'MAYO CLINIC' is visible on the side of one of the buildings.

# What is **Bold. Forward.** Unbound in Rochester?

Patient Focus Facility Expansion:

- Two New Clinical Buildings
- Logistics Center
- Patient parking
- Subways and Skyways
- Utility Support building



**Bold. Forward.**  
Unbound. In Rochester

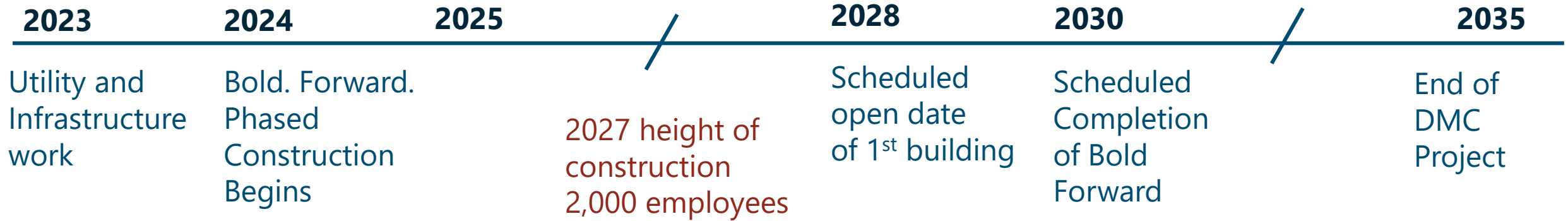
“A multiyear strategic initiative that advances Mayo Clinic’s Bold. Forward. strategy to Cure, Connect and Transform healthcare for the benefit of patients everywhere”.

Source: Kristy Jacobson, Mayo Clinic New Network November 28, 2023





# Mayo Bold Forward & Destination Medical Center

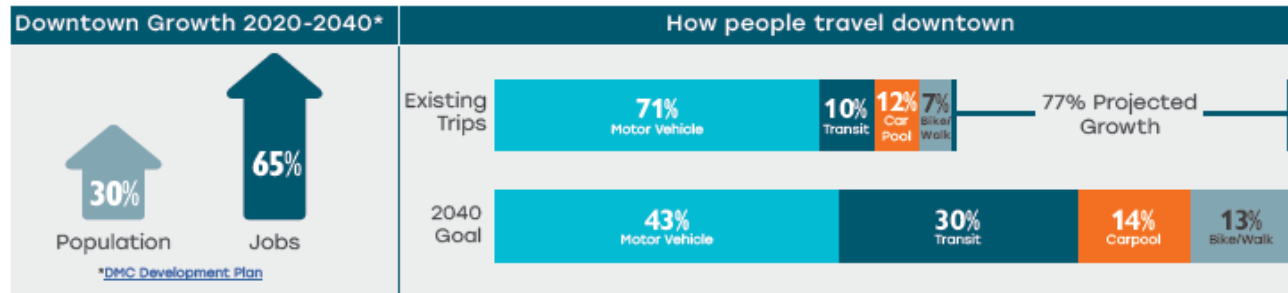




# Bus Rapid Transit



## DOWNTOWN ROCHESTER: PRESENT AND FUTURE



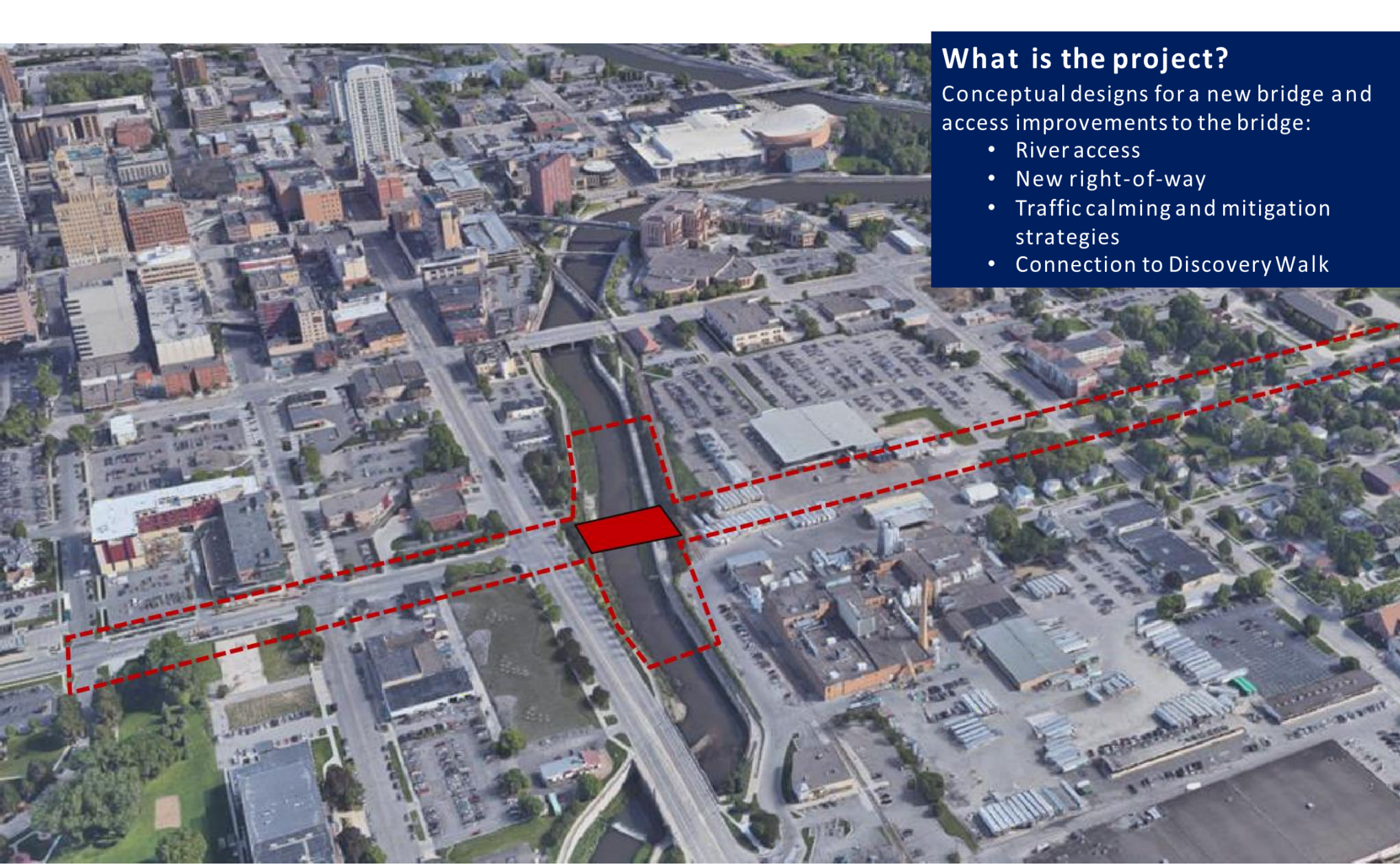
- September 2024 - Final Readiness Report Delivered from FTA
- 100% Design Plans under review by various City Depts & Construction Management Consultants
- October 2024 – Announcement of receipt of \$85M of FTA Capital Investment Grants (CIG) funds
- November 2024 - Advertising Civil/Utilities/Architecture Project in one week

### City of Rochester awarded nearly \$85 million for Link Bus Rapid Transit project



#### Key Characteristics of Link

<p>Service early in the morning to late at night.</p>	<p>Service every 5 minutes during rush hours &amp; 10 minutes at other times.</p>	<p>Fare-Free service for all riders.</p>	<p>Fully electric bus fleet with on-route chargers.</p>	<p>Stations with shelter, heating, light, and realtime signage.</p>
---	---	--	---	---



## What is the project?

Conceptual designs for a new bridge and access improvements to the bridge:

- River access
- New right-of-way
- Traffic calming and mitigation strategies
- Connection to Discovery Walk



**6TH STREET BRIDGE, ROADWAY SAFETY & RIVERFRONT IMPROVEMENTS**



# Oronoco Wastewater Treatment Plant

7 square-miles



# Wastewater System Phasing

- Oronoco Ultimate Service Area
- Phase 1A (2021 - 2023 Construction)
- Phase 1B (~2030 Construction)
- Phase 1C (2021 - 2043 Growth)
- Phase 2 (Service Area Beyond 2043)



Source: City of Oronoco Website

# Oronoco Wastewater Treatment Plant

# Prairie Island 1200-acres NW Olmsted County



**Prairie Island Indian Community**

# Transportation Opportunities



Implementation and growth of Travel Demand Services



Regional transit service



Growth and Development of Park n Rides



Development of Mobility Hubs



Planned Transit Network (PTN)

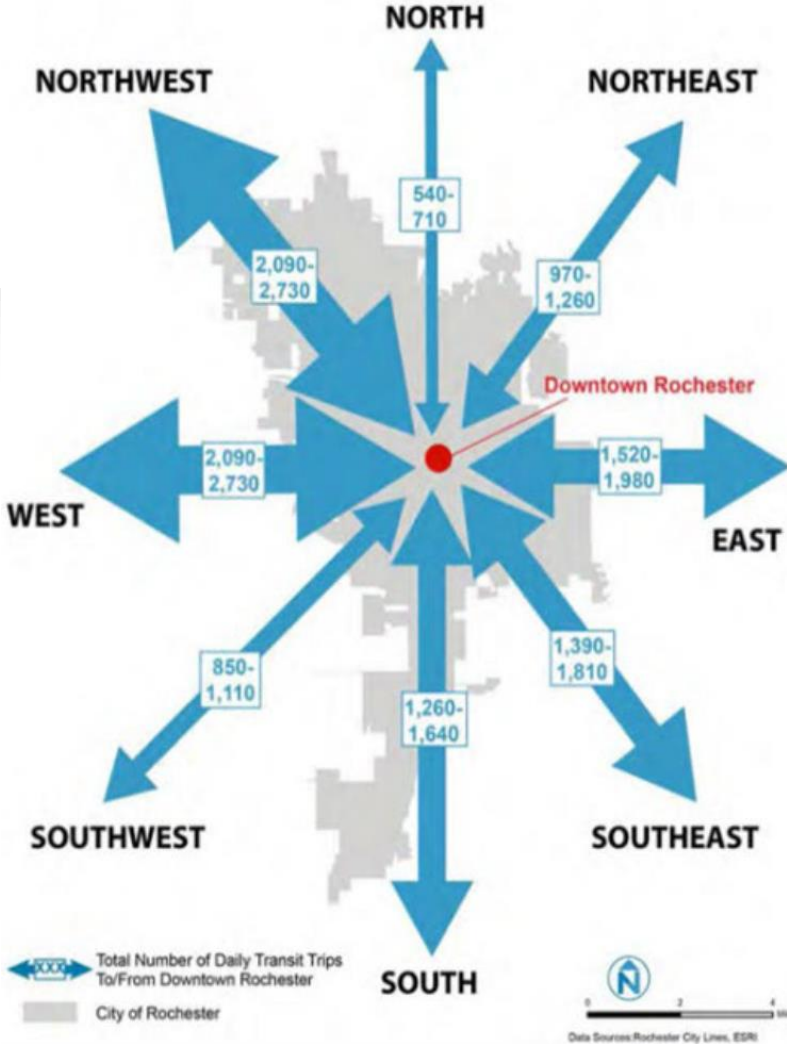


FIGURE 7.4-17 - TOTAL PROJECTED REGIONAL TRANSIT TRAVEL DEMAND (2035)





A vibrant community where everyone thrives

Questions?

OLMSTED COUNTY  
MINNESOTA