

# METRO PROFILE 2024

Annual Report for the Fargo-Moorhead Metropolitan Area



PREPARED BY  
**METROCOG**  
FM REGIONAL TRANSPORTATION PLANNING ORGANIZATION

Adopted:11-21-2024  
One 2nd Street N, Suite 232  
Fargo, ND 58102  
[www.fmmetrocog.org](http://www.fmmetrocog.org)



The preparation of this document was funded in part by the United States Department of Transportation with funding administered through the North Dakota and Minnesota Departments of Transportation, the Federal Highway Administration and the Federal Transit Administration. Additional funding was provided through local contributions from the governments of Fargo, West Fargo, Horace, and Cass County in North Dakota; and Moorhead, Dilworth, and Clay County in Minnesota. The United States government and the states of North Dakota and Minnesota assume no liability for the contents or use thereof.

This document does not constitute a standard, specification, or regulation. The United States Government, the states of North Dakota and Minnesota, and the Fargo-Moorhead Metropolitan Council of Governments do not endorse products or manufacturers. Trade or manufacturers' names may appear therein only because they are considered essential to the objective of this document.

### Dear Interested Persons, Stakeholders, Jurisdictions, Agencies and Organizations

The Fargo-Moorhead Metropolitan Council of Governments (Metro COG) is pleased to present the 2024 Metropolitan Profile: Annual Report for the Fargo-Moorhead Metropolitan Area. This document is previously known as the Surveillance and Monitoring Report for the Fargo-Moorhead Metropolitan Area. **The data presented within this Profile pertains to the 2023 calendar year (January 1, 2023 through December 31, 2023).**

Metro COG began producing the Metropolitan Transportation Surveillance and Monitoring Report in 1981. Over time, this document has taken various forms in order to ensure compliance and compatibility with relevant surface transportation authorization, such as the Infrastructure Investment and Jobs Act (IIJA). The Metro Profile has become an essential performance management tracking tool.

The profile is structured to document and monitor the following:

- (a) Changes to the transportation system;
- (b) Demographic and socioeconomic conditions;
- (c) Changes in land use patterns and/or development patterns;
- (d) Accuracy of projections/assumptions made within the Metropolitan Transportation Plan (MTP); and
- (e) Implementation of the Transportation Improvement Program (TIP).

The Metro COG Policy Board believes this data to be critical to both accurately represent the state of the transportation network and to maintain and to implement elements of the Metropolitan Transportation Planning Program, such as the TIP, MTP, and regional Travel Demand Model (TDM).

It is Metro COG's goal to continue to enhance the ease and accuracy of collecting and reporting metropolitan transportation data; as well as improving accessibility to this information for all interested persons and stakeholders.

Any questions or comments on the content of this document should be directed to Metro COG. Supporting plans, studies, and other transportation data for the Fargo-Moorhead Metropolitan Area is available by contacting Metro COG (701.532.5100), by email at [metrocog@fmmetrocog.org](mailto:metrocog@fmmetrocog.org), or visiting Metro COG's website at [www.fmmetrocog.org](http://www.fmmetrocog.org).

**Duane Breitling**  
Chair, Metro COG Policy Board

**Ben Griffith**  
Executive Director, Metro COG



# CONTENTS

## INTRODUCTION

<b>Introduction</b>	<b>5</b>
Jurisdictions	6
Organizational Chart	7
Vision and Mission	8
Executive Summary	9
<b>Community Profile</b>	
Overview	10
Demographics	11
Employment	12
Housing	13

## TRANSPORTATION

<b>Roadways</b>	
Overview	14
Projects	15
Safety and Pavement Condition	16
Functional Classification	17
<b>Freight</b>	
Overview	18
Travel Time Reliability	19
Rail and Air	20
<b>Bike &amp; Pedestrian</b>	
Overview	22
Projects	23
Network Map	24
Counts	25-27
<b>Transit</b>	
Overview	28
Projects	29
Route Map & Inventory	30-31
Vehicle Condition	32-33
Acronyms	34
Additional Resources	35

# INTRODUCTION

## Who is Metro COG?

The Fargo-Moorhead Metropolitan Council of Governments (Metro COG) is both the designated Council of Governments (COG) and Metropolitan Planning Organization (MPO) for the greater Fargo-Moorhead Metropolitan Area. An MPO is a transportation policy-making organization comprised of representatives from local government and transportation authorities. The Federal Surface Transportation Assistance Act of 1973 requires the formation of a MPO for any urbanized area with a population greater than 50,000. MPOs ensure that existing and future expenditures for transportation projects and programs are based on a comprehensive, cooperative, and continuing planning process, known as the “3-C” process.

October of 2023, Metro COG became a designated Transportation Management Area (TMA). A TMA is an urbanized area with a population of greater than 200,000 people that is designated by the US Secretary of Transportation. With the new TMA status, Metro COG will have a stronger role in setting priorities for transportation improvement projects.

## What is the Metro Profile?

The Metro Profile is an annual report that provides a snapshot of the Fargo-Moorhead metro area based on data from the previous year. The Metropolitan Profile is separated into five chapters, each of which focus on trends affecting the development patterns and transportation network of the Fargo-Moorhead MPA. Together the chapters provide a comprehensive snapshot of the conditions and trends affecting the metro area based on 2023 data.

The chapters are grouped into two sections:

### Community Profile

### Transportation

The Transportation section encompasses topics focused on the:

### Roadway System

### Freight & Interstate Travel

### Bicycle & Pedestrian Network

### Local & Regional Transit

Within each of these chapters are metrics that Metro COG tracks from year to year. These metrics are used to track progress towards goals set in the Metropolitan Transportation Plan (MTP). The goals in the MTP are developed with Metro COG’s vision, mission, and core functions in mind.

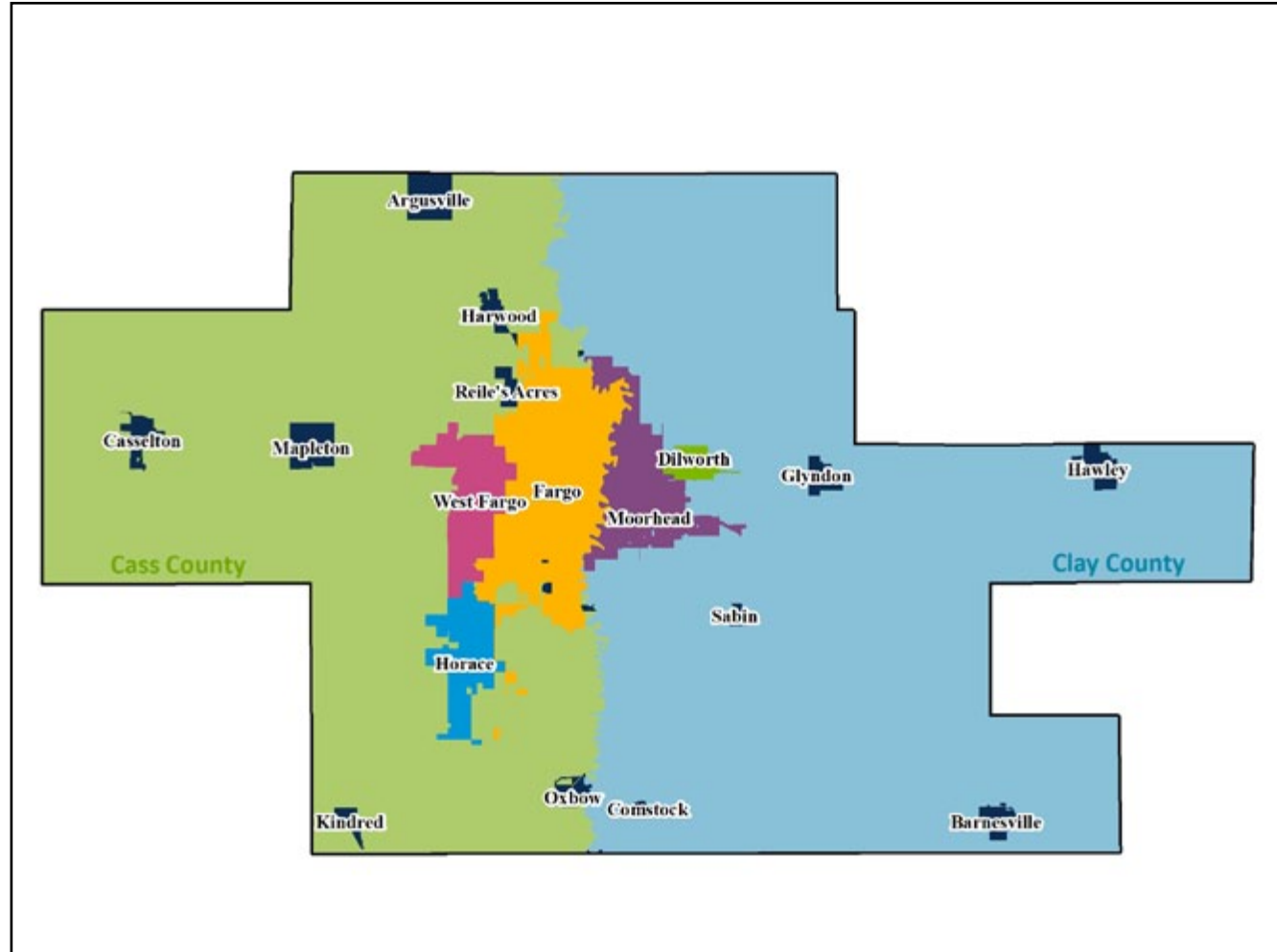
# JURISDICTIONS

MEMBER

- CASS COUNTY 1,768 SQ. MILES
- FARGO 51.18 SQ. MILES
- WEST FARGO 16.41 SQ. MILES
- HORACE 12.68 SQ. MILES
- CASSELTON 2.18 SQ. MILES
- HARWOOD 1.31 SQ. MILES
- MAPLETON 3.91 SQ. MILES

ASSOCIATE

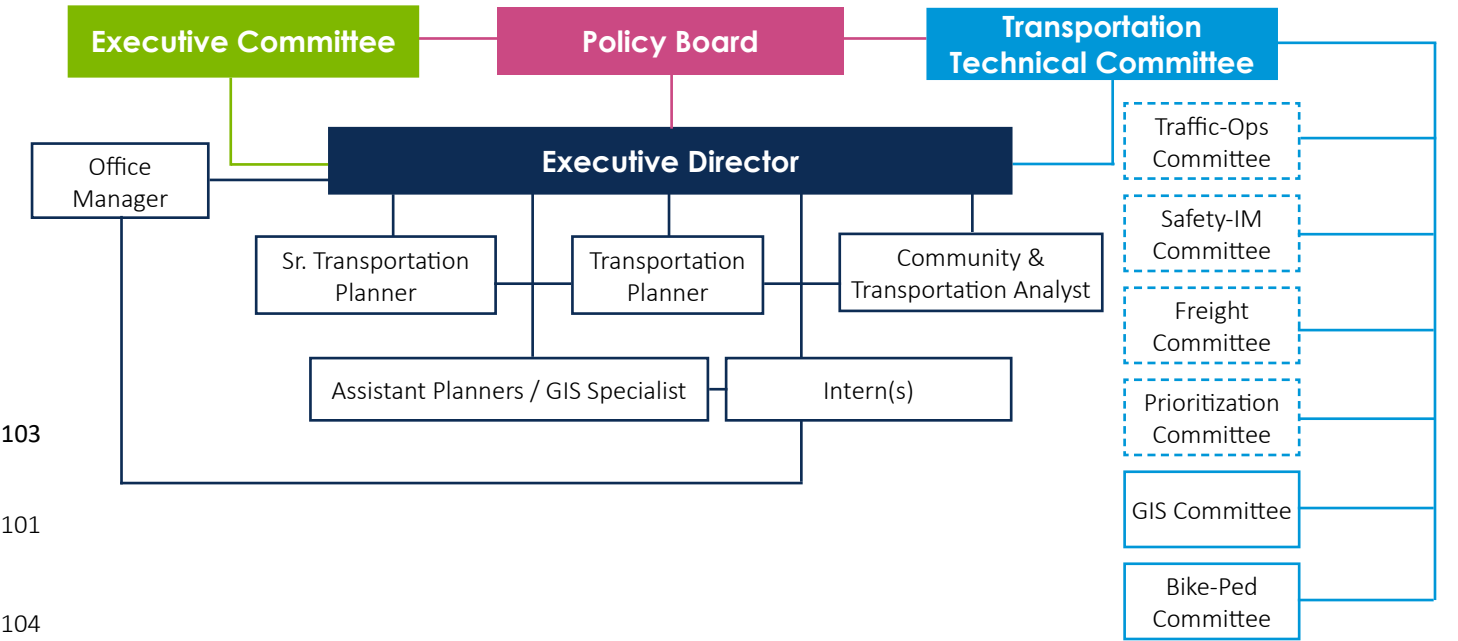
- CLAY COUNTY 1,053 SQ. MILES
- MOORHEAD 22.32 SQ. MILES
- DILWORTH 3.22 SQ. MILES
- BARNESVILLE 1.96 SQ. MILES
- GLYNDON 1.59 SQ. MILES
- HAWLEY 2.448 SQ. MILES



\*2023 INFORMATION WAS USED IN 2022 METRO PROFILE

NOTE: Jurisdiction acreage was calculated from the GIS information provided by each jurisdiction. Associate Jurisdictions are depicted in navy, while the Member Jurisdictions are color coded by pink, purple, greens, bright blues, or yellow.

# STAFF ORGANIZATIONAL CHART



**Metro COG**  
701.532.5100

**Executive Director**  
Ben Griffith ..... 701.532.5103

**Office Manager**  
Angela Brumbaugh ..... 701.532.5101

**Senior Transportation Planner**  
Michael Maddox ..... 701.532.5104

**Transportation Planner**  
Dan Farnsworth ..... 701.532.5106

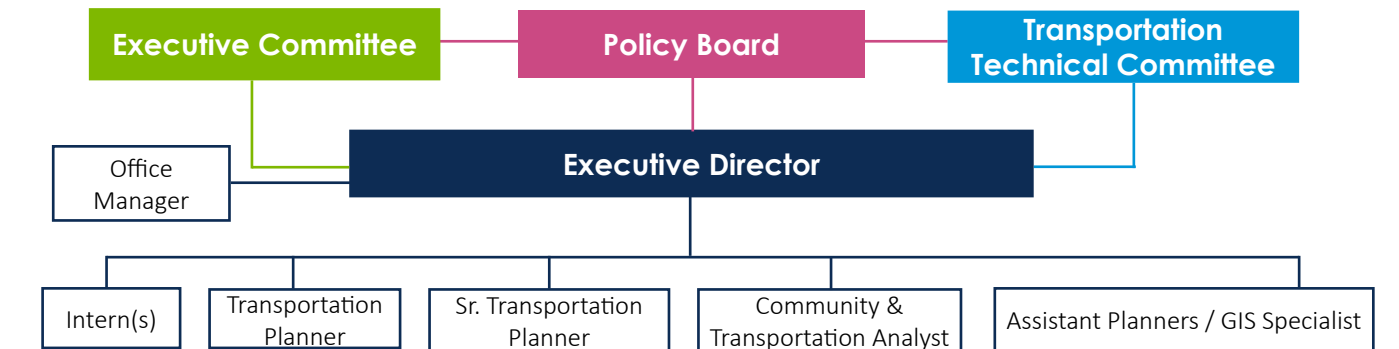
**Community & Transportation Analyst**  
Adam Altenburg ..... 701.532.5105

**Assistant Planner / Transit**  
Chelsea Levorsen ..... 701.532.5102

**Assistant Planner / TIP**  
Paul Bervik ..... 701.532.5107

**GIS Specialist / Assistant Planner**  
Karissa Pavek ..... 701.532.5110

# PROJECT ORGANIZATIONAL CHART



----- Committees that do not meet regularly or those that are called upon as needed.

# VISION AND MISSION

## Vision Statement

**Provide quality, proactive regional planning services for a changing society.**

## Mission

- 1. Harmonize the activities of federal, state, and local agencies**
- 2. Render technical assistance**
- 3. Encourage public participation in the development of the area**

## Core Functions

- Support the economic vitality of the metropolitan area, especially by enabling global competitiveness, productivity, and efficiency.
- Increase the safety of the transportation system for motorized and non-motorized users.
- Increase the security of the transportation system for motorized and non-motorized users.
- Increase accessibility and mobility for people and freight.
- Protect and enhance the environment, promote energy conservation, improve the quality of life, and promote consistency between transportation improvements and State and local planned growth and economic development patterns.
- Enhance the integration and connectivity of the transportation system, across and between modes, for people and freight.
- Promote efficient system management and operation.
- Emphasize the preservation of the existing transportation system.
- Improve the resiliency and reliability of the transportation system and reduce or mitigate storm water impacts of surface transportation.
- Enhance travel and tourism.

# EXECUTIVE SUMMARY

The economy in the Metro continued to see growth trends during 2023 as it neared pre-pandemic levels. This can be seen through Hector International Airport reporting its highest passenger volume of all time.

## Demographic Highlights

The Fargo-Moorhead Metropolitan Statistical Area (MSA) has continued to experience faster population growth than the country as a whole. In 2023, much of this growth is estimated to have occurred within Horace. The population of the metro remains younger and more educated than national averages thanks to the number of higher education institutions in the area. The metro also continues to look more diverse, with despite having lower rates of foreign-born individuals and those speaking a language other than English at home. Even though the MSA is diversifying, regional trends are slower than what is occurring nationally.

## Economics

The unemployment rate in the Metro continues to decrease. In 2023, despite seeing a slight decrease in the labor force, the Fargo-Moorhead Metro area was ranked #2 in the nation for lowest unemployment rate (tied with Sioux Falls, SD). Even though the FM Area observed increased median household incomes, the region is still below the national average. The regional poverty rate increased, nearing the national average.

## Transportation

Vehicle miles traveled (VMT) and vehicle miles traveled per capita both increased in 2023. However, the Metro area's average commute time decreased from 2022.

The Metro area welcomed two Amazon Warehouses at the end of 2021 and in 2023 construction continued a series of four buildings for the Dakota Commerce Center. The area saw an increase in truck average daily traffic and an improved truck travel time reliability index. However, air cargo continued to decline.

Amtrak's Empire Builder increased their on-time performance and saw a significant increase in passenger ridership in 2023. Hector International Airport also saw an improvement in both air passengers and enplanements. 2023 was Hector International Airport's busiest passenger year on record.

Data collected from Metro COG's pedestrian counters shows a drop in activity this year, however bicycle activity increased. Metro COG saw a significant decrease in the number of non-motorized crashes but the number of both; serious injuries and fatalities, increased.

MATBUS ridership has continued to increase in all jurisdictions. Ridership is up for paratransit and Metro Senior ride. Overall, ridership from local university students has increased; however, ridership from MSUM and NDSCS has decreased. MATBUS was able to increase some service, however, like 2021 and 2022, driver shortages have continued to hinder service.

# COMMUNITY PROFILE

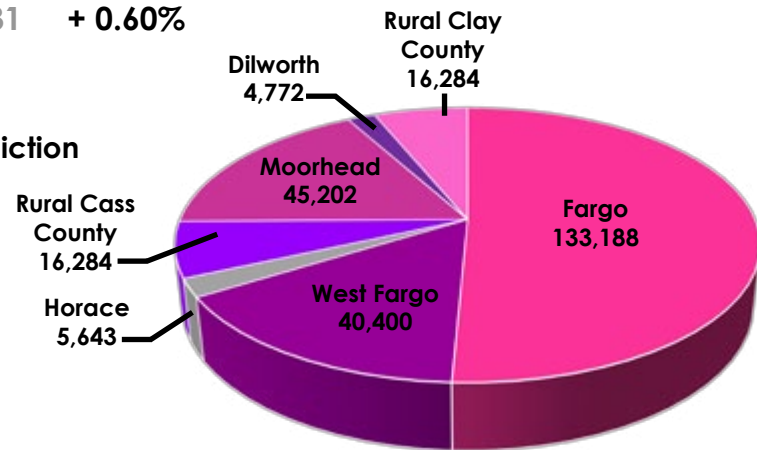
## Overview



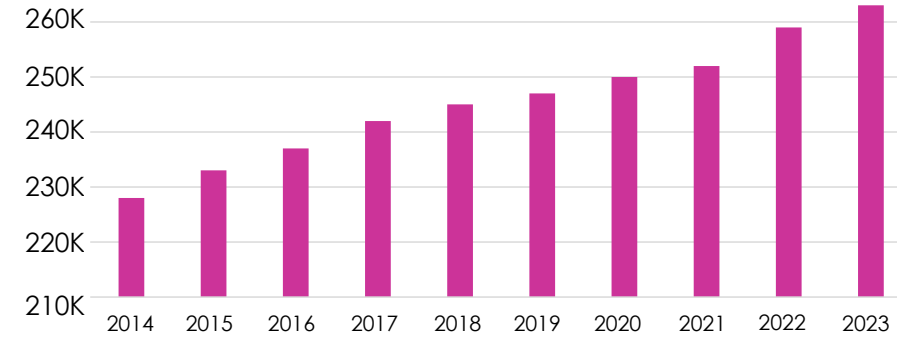
### Population & Growth by Jurisdiction

FARGO 133,188*	+1.3%	MOORHEAD 45,202*	+0.76%
WEST FARGO 40,400*	+1.04%	DILWORTH 4,772*	+0.02%
HORACE 5,643*	+31.9%	RURAL CLAY 16,284	-0.08%
RURAL CASS 17,131	+0.60%		

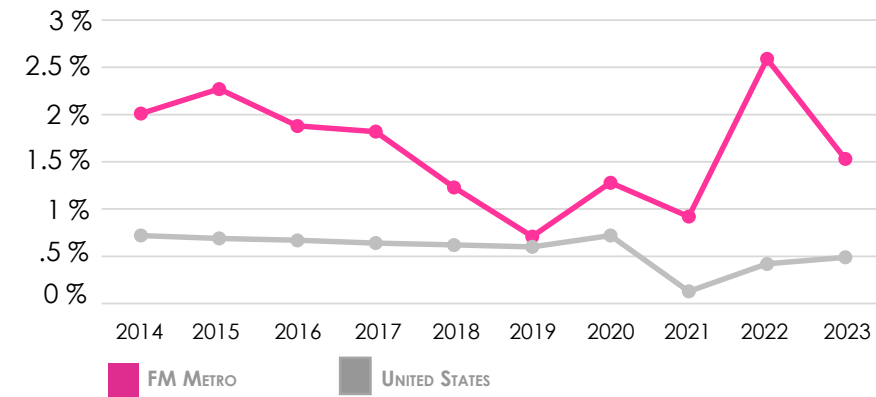
### 2023 Population Breakdown by Jurisdiction



2014 - 2023  
FM MSA Annual Population Growth



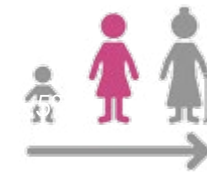
2014 - 2023  
Population Growth by %



## United States

### COMMUNITY PROFILE

## Demographics



#### Median age

FM MSA **32.9** +2.7%

United States **39.2 yrs**



#### Bachelor's degree or higher 25 Years and Over

FM MSA **42.9%** -0.23%

United States **36.2%**



#### Speaks a language other than English at home\*\*

FM MSA **6.9%** -19.7%

United States **22.5%**



#### Foreign born

FM MSA **5.9%** -14.54%

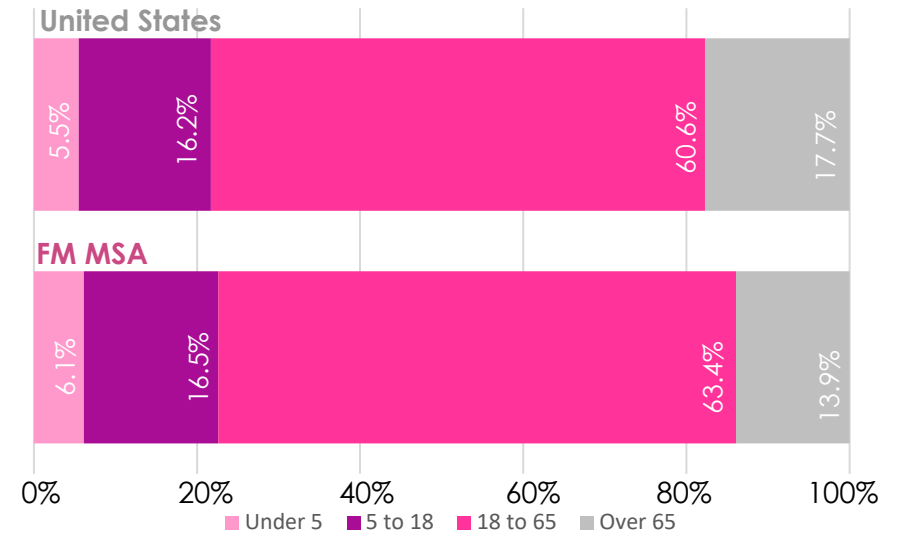
United States **14.3%**

#### Racial composition^

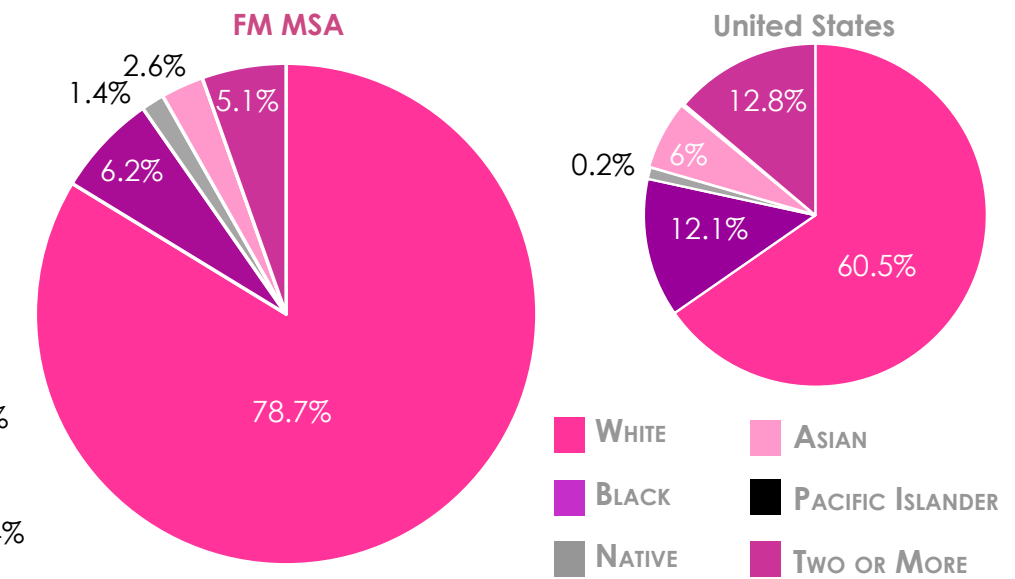


+ / - Designates change from previous year  
\*\* 2022 (8.6%) used previous year (ACS) 5-year estimates

#### Age distribution



#### Racial composition^



\* Census ACS discrepancy; Source: Census data, Vintage Estimates, 2023

Sources in this section: Census data, American Community Survey (ACS) estimates, Federal Reserve Bank, Home Builders Association of Fargo-Moorhead

COMMUNITY PROFILE

# Employment



Unemployment rate in 2022

FM MSA **1.81%** -2.6%  
 United States **3.63%**

**2<sup>nd</sup>** #1 Burlington, VT  
 #2 Fargo/Mhd  
 #2 Sioux Falls, SD



Percent in labor force<sup>^</sup>

FM MSA **74.1%** -1.2%  
 United States **63.5%**



Median household income<sup>^</sup>

FM MSA **\$73,641** +7.5%  
 United States **\$75,149**



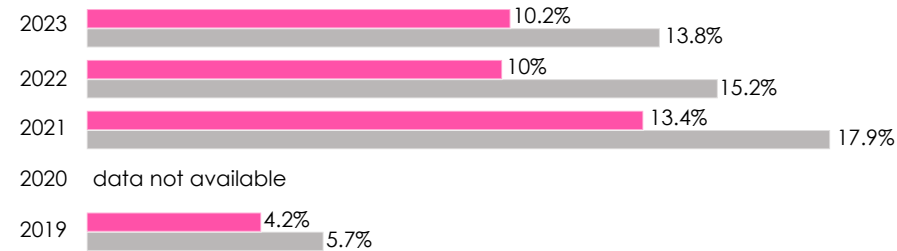
Percent in poverty<sup>^</sup>

FM MSA **11.8%** +4.4%  
 United States **12.5%**



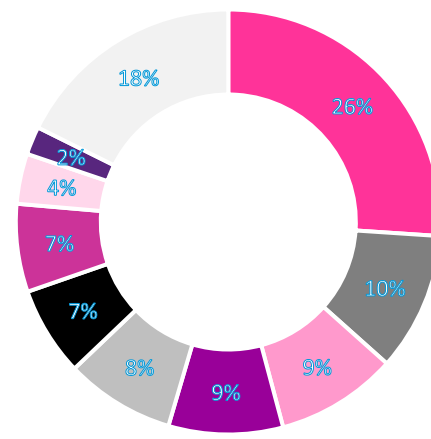
Worked from home

FM MSA **10.2%**  
 United States **13.8%**



Top 10 industries ranked by employment

- Healthcare
- Sales
- Management
- Business / Finance
- Manufacturing
- Entertainment & Recreation
- Construction
- Transportation
- Agriculture
- All Other



NOTE: For full industry titles and more comprehensive economic profile, see "Economic Profile" in Additional Resources.

COMMUNITY PROFILE

# Housing



**118,491**

Housing units metro wide

Average household size

FM MSA **2.27** +0.44%  
 United States **2.49**

Owner-occupied rate<sup>^</sup>

FM MSA **55%** -2.65%  
 United States **65%**



**846**

Building permits issued in 2023

**834** New single-family Permits

**12** New multi-family Permits [ & 1066 units ]

+ / - Designates change from previous year  
 \* fred.stlouisfred.org

<sup>^</sup>2019-2023 American Community Survey (ACS) 5-year estimates

2023 30-Yr Fixed Mortgage\*

Average **6.81%** Year High **7.79%**

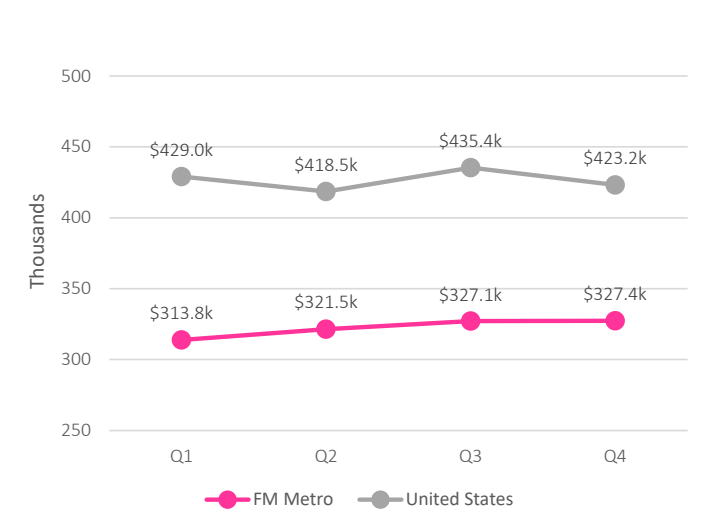
Median Home Price\*

**\$322,433**  
 + \$13,858 from 2022

Average Rent (3 bedroom)

**\$1,220**

2023 Median Household Price\*



NOTE: House prices may not be reflective of additional special assessment costs

New single-family Permits

- +293** Fargo
- +156** West Fargo
- +220** Horace
- +111** Moorhead
- +19** Dilworth
- +35** Associate Jurisdictions

New multi-family Permits & Units

- +9** [842] Fargo
- +0** West Fargo
- +0** Horace
- +3** [224] Moorhead
- +0** Dilworth
- +0** Associate Jurisdictions

NOTE: For more in-depth information, see "Permits Plus" in Additional Resources.

+ / - Designates change from previous year

<sup>^</sup>2019-2023 American Community Survey (ACS) 5-year estimates

# ROADWAYS

## Overview



Vehicle miles traveled (VMT)  
**2.5billion+ (+5%)**

VMT per capita  
FM Metro **9,451**  
+ 297 from 2022  
United States **9,745**

Average Daily VMT per capita  
FM Metro **25.89**

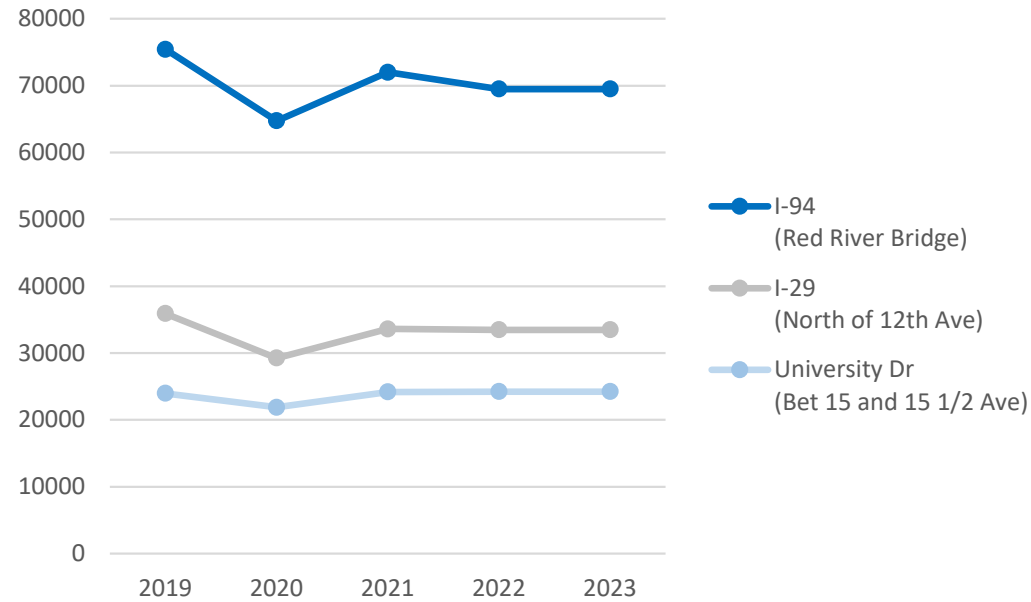
Average commute time in minutes<sup>^</sup>  
FM Metro **17.7**  
United States **26.8**

FM Area Auto Travel Time Reliability\*  
Interstate **100%**  
Non-Interstate **99.3%**

NOTE: For more information, see "Performance Measures" in Additional Resources.



Average Daily Traffic on I-94, I-29 and University Drive



## ROADWAYS

# Projects



### Top 2023 Federal Fiscal Year Funded TIP Projects

- 52nd Ave. Reconstruction (4200016)
- I-94 Bridge Repair at Lynchburg Interchange (9231005)
- 8th Ave. North Reconstruction (9230001)
- MN9 Reconstruct, Mill & Overlay, Trail, ADA Improvements (8200011)
- Transit Operating Assistance (4200029)

### Number of TIP Projects in 2023

**60**

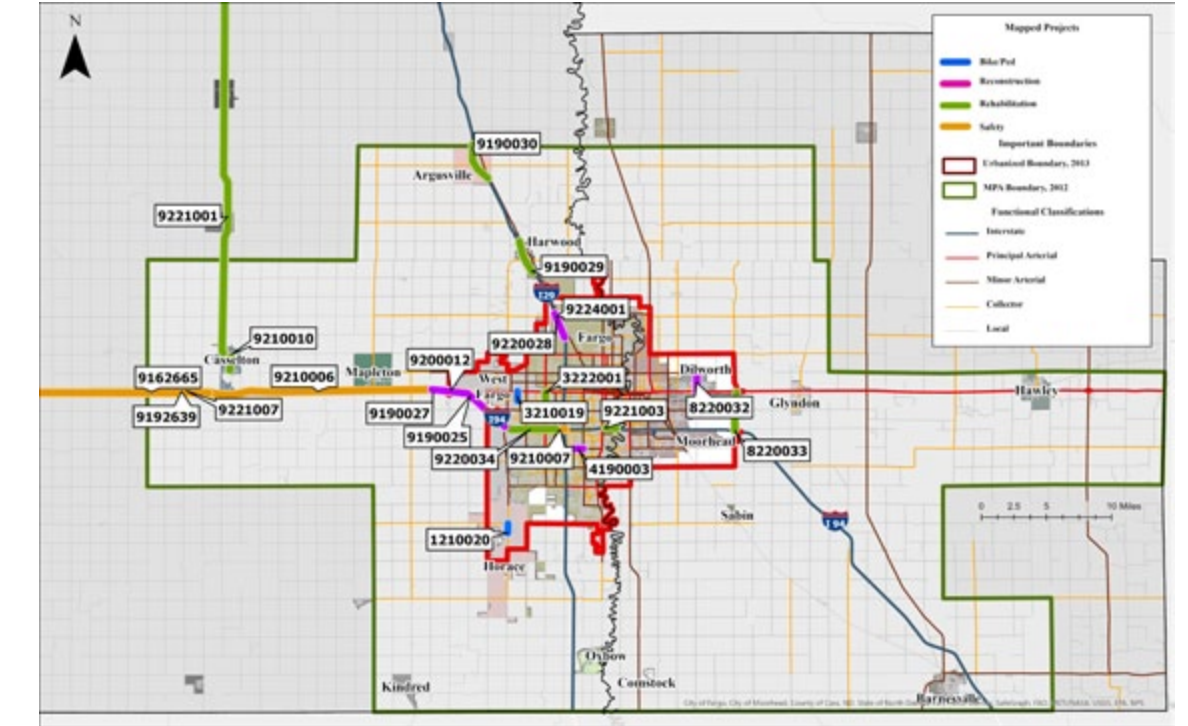
Total cost  
**\$ 86,065,822**

Federal funding  
**\$ 50,069,286**

State funding  
**\$ 12,837,956**

Local funding  
**\$ 23,158,580**

### 2023 Mapped Federally Funded TIP Projects



Sources in this section: NDDOT, MnDOT, American Community Survey (ACS) estimates  
^2019-2023 American Community Survey (ACS) 5-year estimates  
\*NPMRDS data



ROADWAYS

# Safety & Pavement Conditions\*



**ND-Side of the FM MPA 2023 safety data**

**6** Number of fatalities  
**52** Number of serious injuries  
**12** Number of non-motorized fatalities and non-motorized serious injuries

**MN-Side of the FM MPA 2023 safety data**

**4** Number of fatalities  
**7** Number of serious injuries  
**2** Number of non-motorized fatalities and non-motorized serious injuries

**ND-Side of the FM MPA 2023 Pavement Conditions**



**77.35%** of Interstate in good condition  
**0%** of Interstate in poor condition  
**15.55%** of non-Interstate in good condition  
**.87%** of non-Interstate in poor condition

**MN-Side of the FM MPA 2023 Pavement Conditions**

**67.42%** of Interstate in good condition  
**0%** of Interstate in poor condition  
**52.94%** of non-Interstate in good condition  
**0%** of non-Interstate in poor condition

**ND-Side of the FM MPA 2023 Bridge Conditions**



**54.05%** of NHS bridges in good condition  
**2.03%** of NHS bridges in poor condition

**MN-Side of the FM MPA 2023 Bridge Conditions**

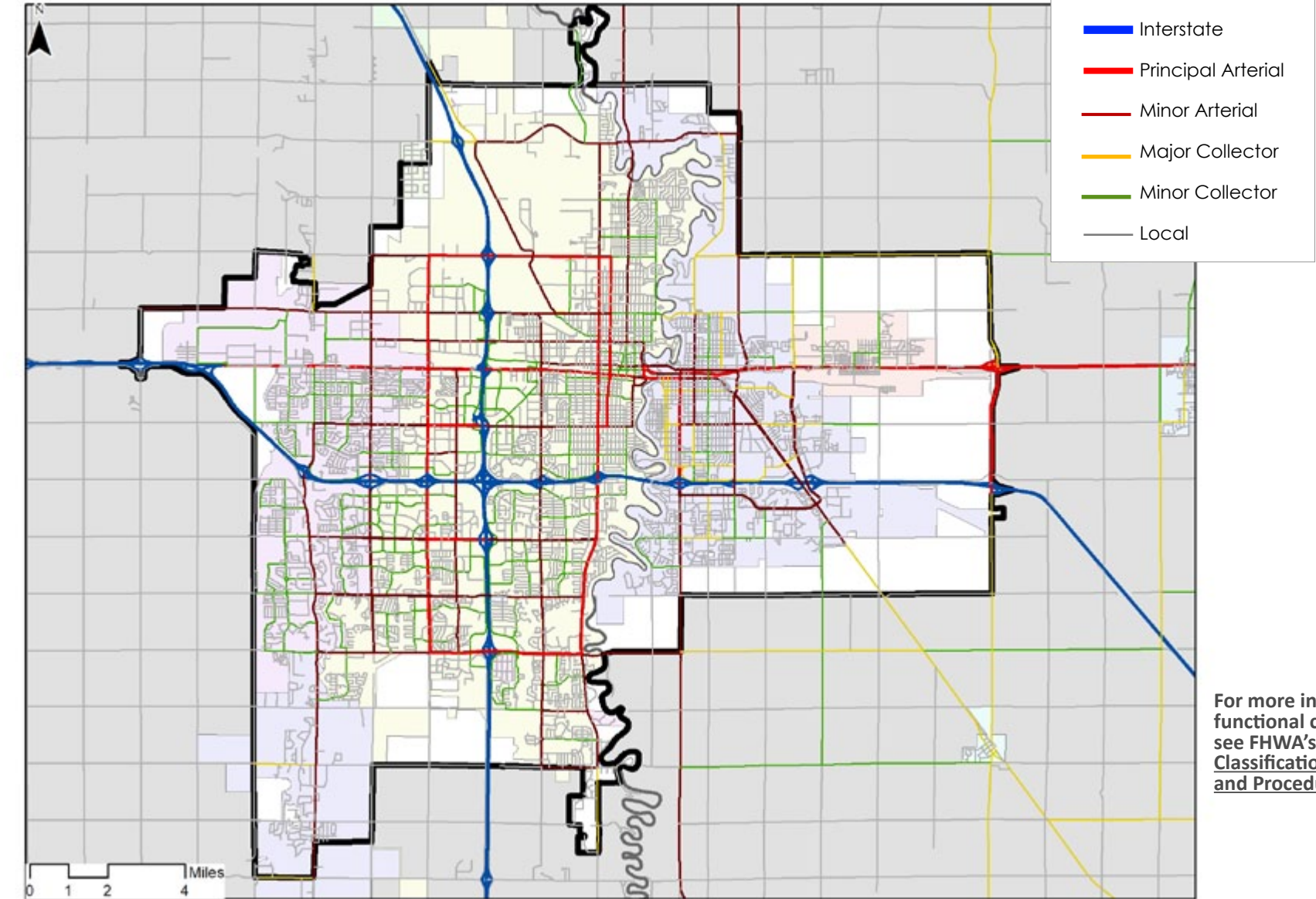
**11.87%** of NHS bridges in good condition  
**5.95%** of NHS bridges in poor condition

\*NOTE: For more information regarding Metro COG's safety targets, see "Performance Measures" in Additional Resources.

ROADWAYS

# Functional Classification

No Change in Function Classification from 2021 update



For more information regarding functional classification, please see FHWA's [Highway Functional Classification Concepts, Criteria and Procedures 2023 Edition](#).

# FREIGHT

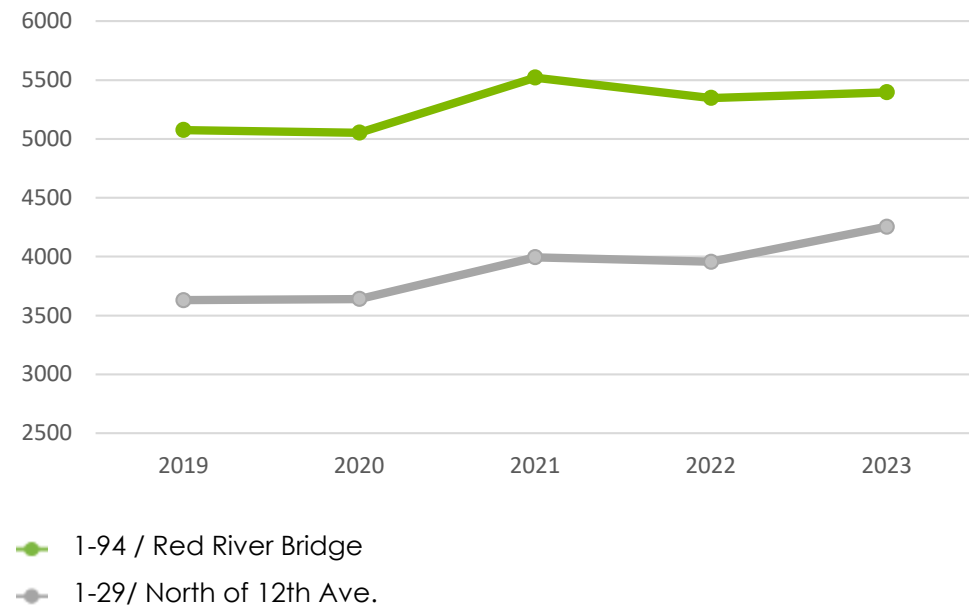
## Overview



Air cargo total landed weight in 2023 (lbs)  
**406.1 million**

Change from year previous  
**-0.9%**

Truck Average Daily Traffic (ADT) on I-94 and I-29



## New Facilities

**Asian & American Supermarket**  
19,500 sf international store - The largest international grocery store in the Dakotas

**Brewhalla**  
100,000 sq. ft. Brewery with a hotel, apartments, food, and shopping

## FREIGHT

### Travel Time Reliability



Truck Travel Time Reliability Index (TTTR) \*

Fargo-Moorhead MPA	Minneapolis-St Paul MPA
<b>1.22</b>	<b>1.71</b>

FM Area Auto Travel Time Reliability \*

Interstate	Non-Interstate
<b>100%</b>	<b>99.3%</b>

TTTR Actual vs Target



NOTE: For more information, see "Performance Measures" in Additional Resources.  
\*NPMRDS data

### 9 Number of unreliable non-interstate road segments

- 2ND STREET N, FARGO**  
North & southbound, near NP Avenue
- 1ST AVENUE N, FARGO**  
West & eastbound, near 2nd Street
- US 10, MOORHEAD**  
(Center Avenue) westbound, near 21st Street / 1st Avenue
- US 75, MOORHEAD**  
(8th Street) north & southbound, US 10 (Center Avenue) to Main Street

FREIGHT

# Rail and Air



Fargo Amtrak Station Ridership in 2023  
**17,545** Change from 2022  
**+19.17%**

Empire Builder Passengers in 2023  
**338,993** Change from 2022  
**+11.6%**

Empire Builder 2023 On-time Performance  
**51%** Change from 2022  
**+6.25%**

FAR Air Passengers in 2023  
**1,032,497** Change from 2022  
**+13.7%**

FAR Enplanements (Boarding) in 2023  
**516,071** Change from year previous  
**+13.29%**

NOTE: For more information, see "Hector International Airport Year-End Statistics" in Additional Resources.



## Direct Flights from Hector International Airport



## Trains per Day, FRA Crossing Inventory Data (December 2023)



**8** Thru Freight Trains & **2** Passenger Trains (Empire Builder)  
 Crossing #070839F, Roberts Street, Fargo

**26** Thru Freight Trains  
 Crossing #070807A, 4th Street N, Fargo (between Main Avenue and NP Avenue)

NOTE: For more information, see "Fargo Amtrak Station" in Additional Resources.  
 + / - Designates change from previous year

FREIGHT

# Rail and Air Map

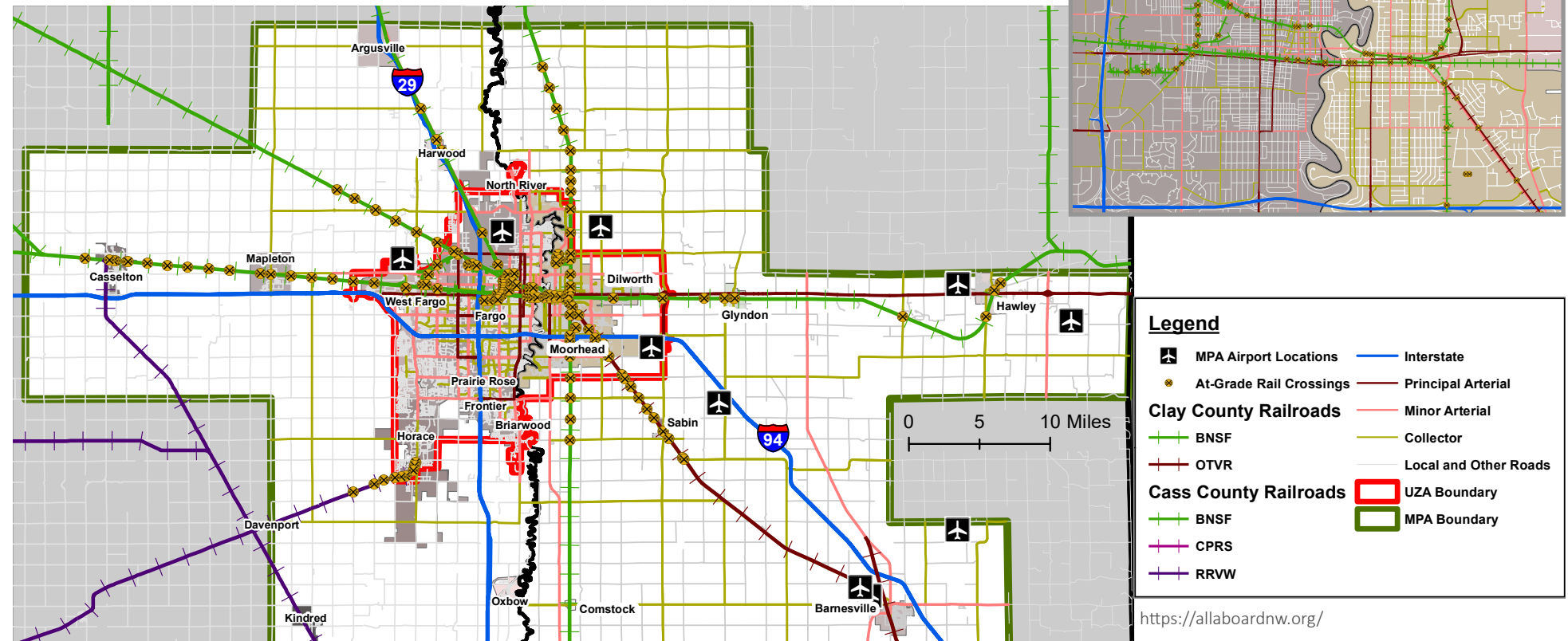
## Amtrak Projects & Studies

In 2023 Fargo Amtrak started to modify it's station and platform to be ADA compliant. Updates are scheduled to be completed in 2024.

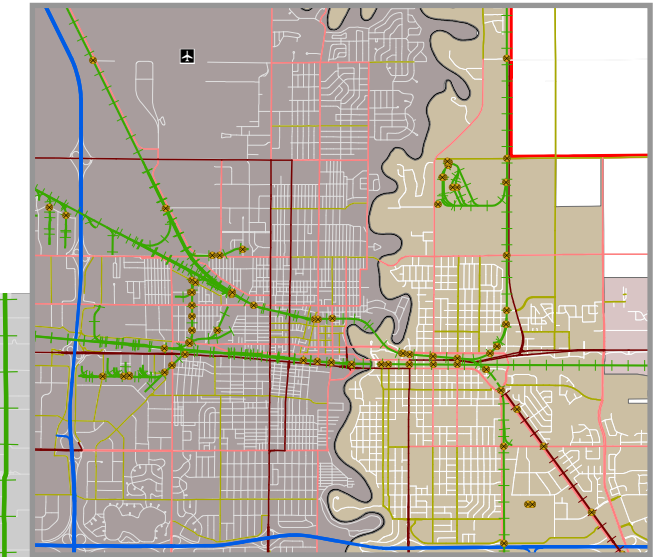
Amtrak Daily Long-Distance Service Study.

## All Aboard Northwest

All Aboard Northwest continues to advocate for the needs of rail passengers in the Greater Northwest. In 2023 AANW conducted their 2023 Train Trek: "Returning Passenger Trains to a Station Near You: Why and How" To learn more, visit their website: [www.allaboardnw.org](http://www.allaboardnw.org).



## Downtown Inset



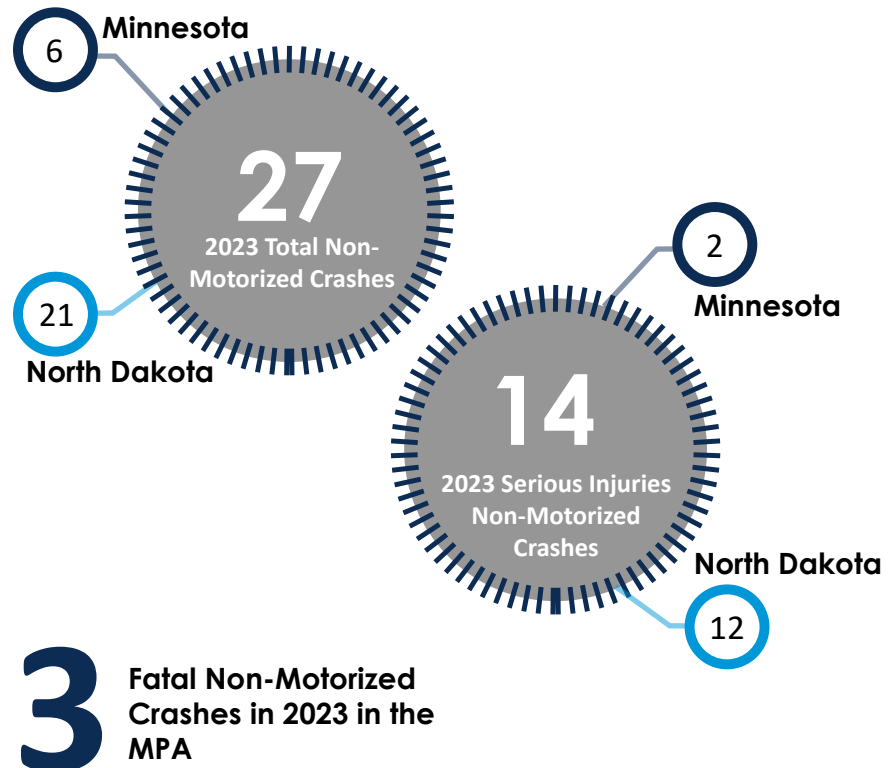
## Legend

- MPA Airport Locations
- At-Grade Rail Crossings
- Clay County Railroads: BNSF, OTVR
- Cass County Railroads: BNSF, CPRS, RRVW
- Interstate
- Principal Arterial
- Minor Arterial
- Collector
- Local and Other Roads
- UZA Boundary
- MPA Boundary

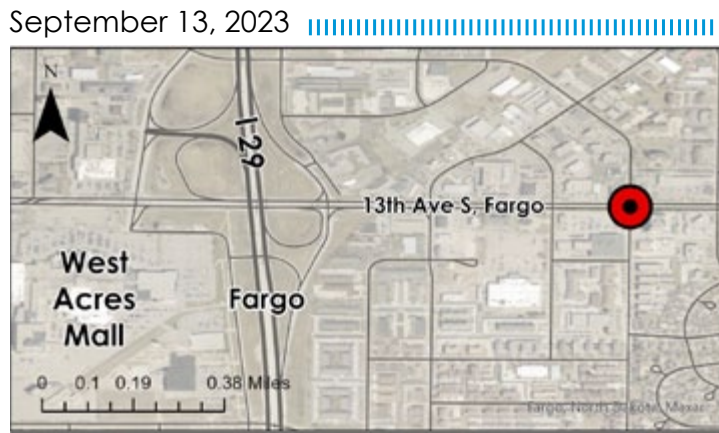
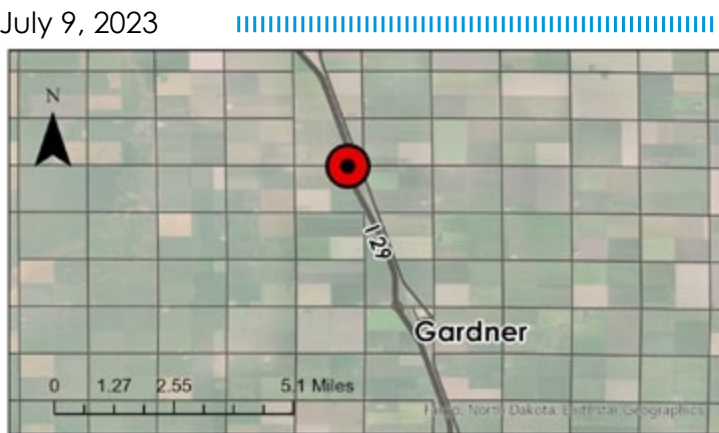
<https://allaboardnw.org/>

# BIKE & PEDESTRIAN

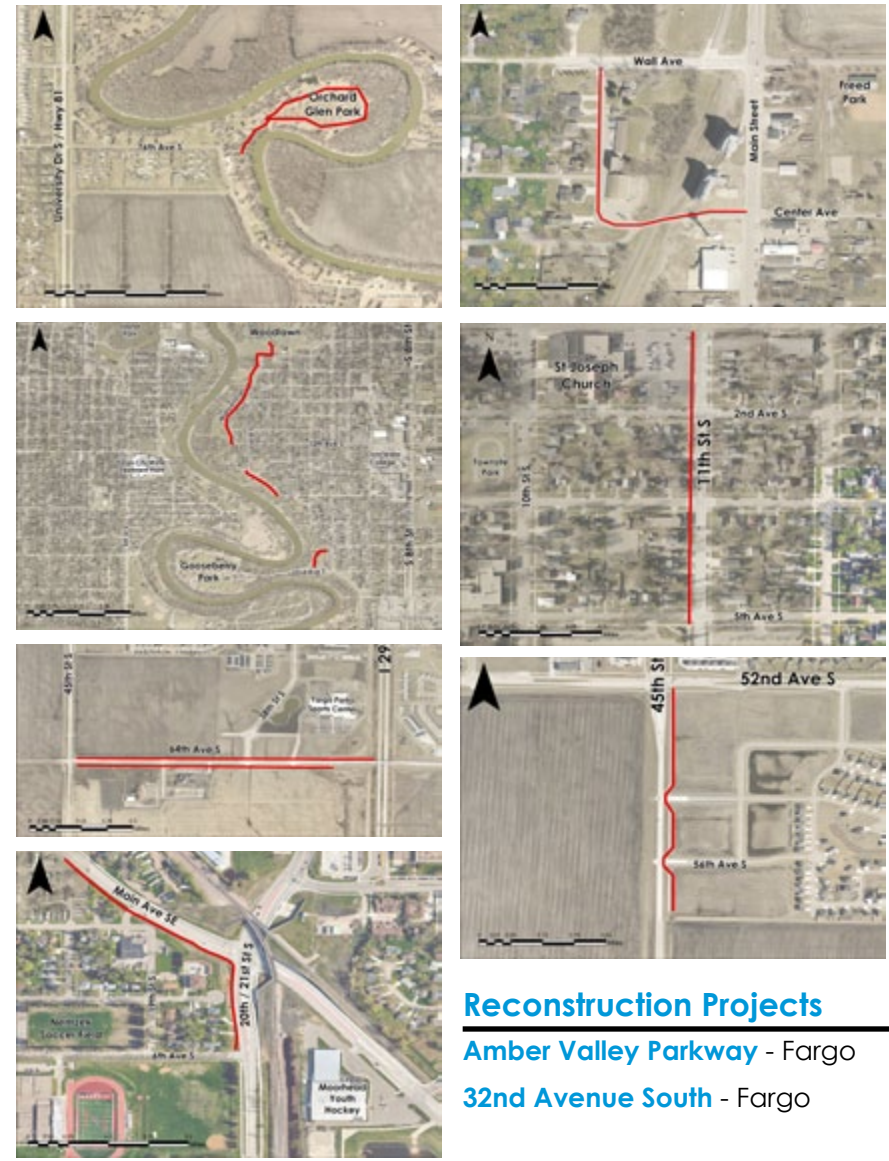
## Safety Overview



### Fatal Non-Motorized Crash Locations



## BIKE & PEDESTRIAN Projects



Reconstruction Projects	2023 Projects
Amber Valley Parkway - Fargo	Midtown Trail - Moorhead
32nd Avenue South - Fargo	45th Street Path - Fargo
	64th Avenue Path - Fargo
	The Wilds - West Fargo
	Main - Moorhead
	Orchard Glen - Fargo
	11th Street South - Moorhead
	Center Avenue - Horace
	CR 17 - Horace

## Area Bikeway Typologies

<b>253 (+4 miles)</b>
Miles of Shared-Use Bikeway Paths
<b>11</b>
Miles of Bikeway Lanes
<b>9</b>
Miles of Signed Bike Lanes
<b>8</b>
Miles of Bikeway Sharrows (shared-lane)
<b>5</b>
Miles of Buffered Bike Lanes
<b>&lt;1</b>
Miles of Separated Bike Lanes



NOTE: For more information, please see "Performance Measures" in additional resources.  
Sources in this section: NDDOT, MnDOT  
2023 METROPOLITAN PROFILE | 22

BIKE & PEDESTRIAN

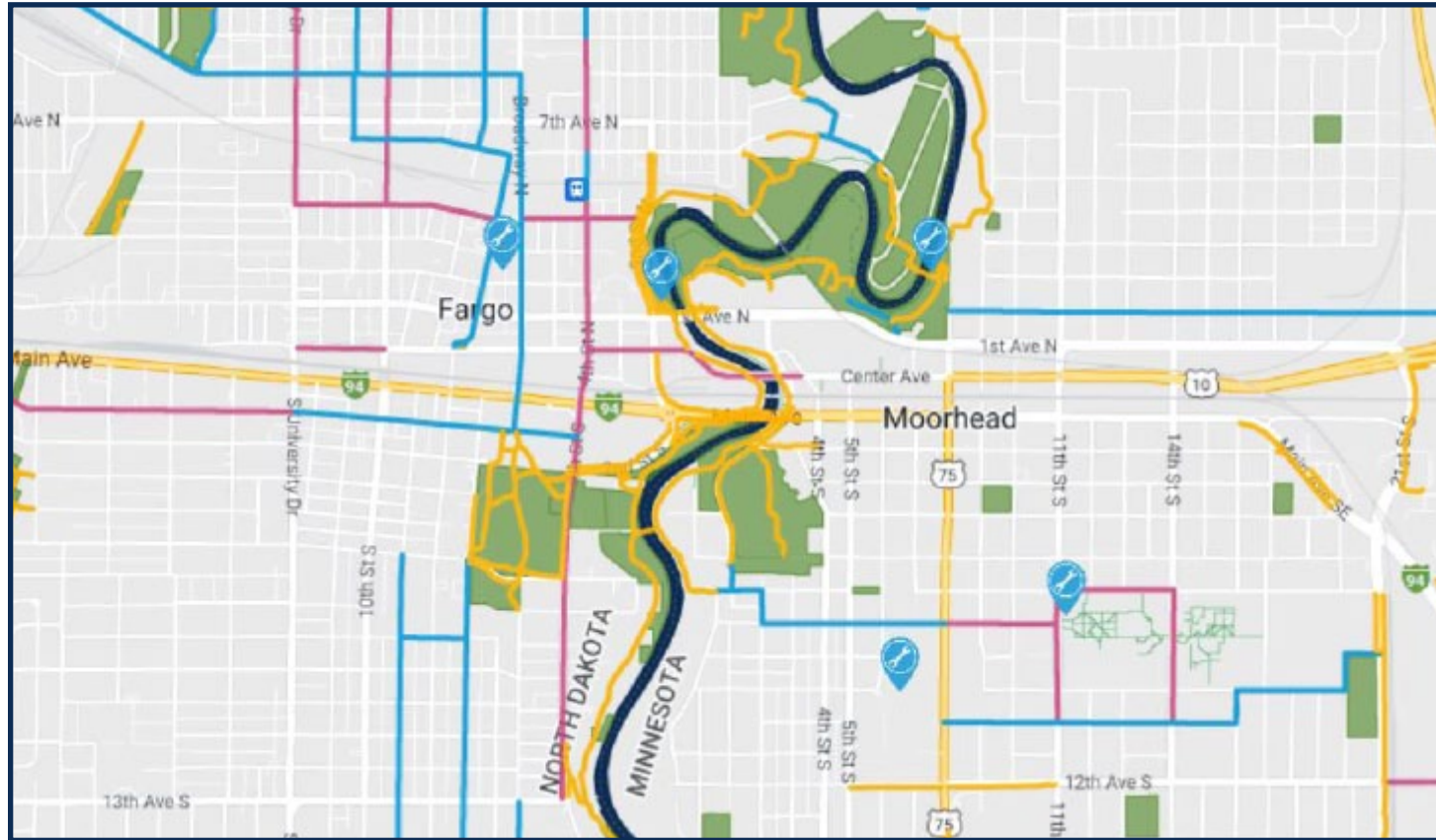
# Network map



## Fargo-Moorhead Bike Map

The application is available on Google Play and the Apple App Store

The bike map of the Fargo-Moorhead metro area includes locations of bikeways (streets with sharrows, wide shoulders, bike lanes or bike-signed roadways) and shared use paths (paths for biking and walking). Also included in the map are the locations of bike repair stations and bike lockers.

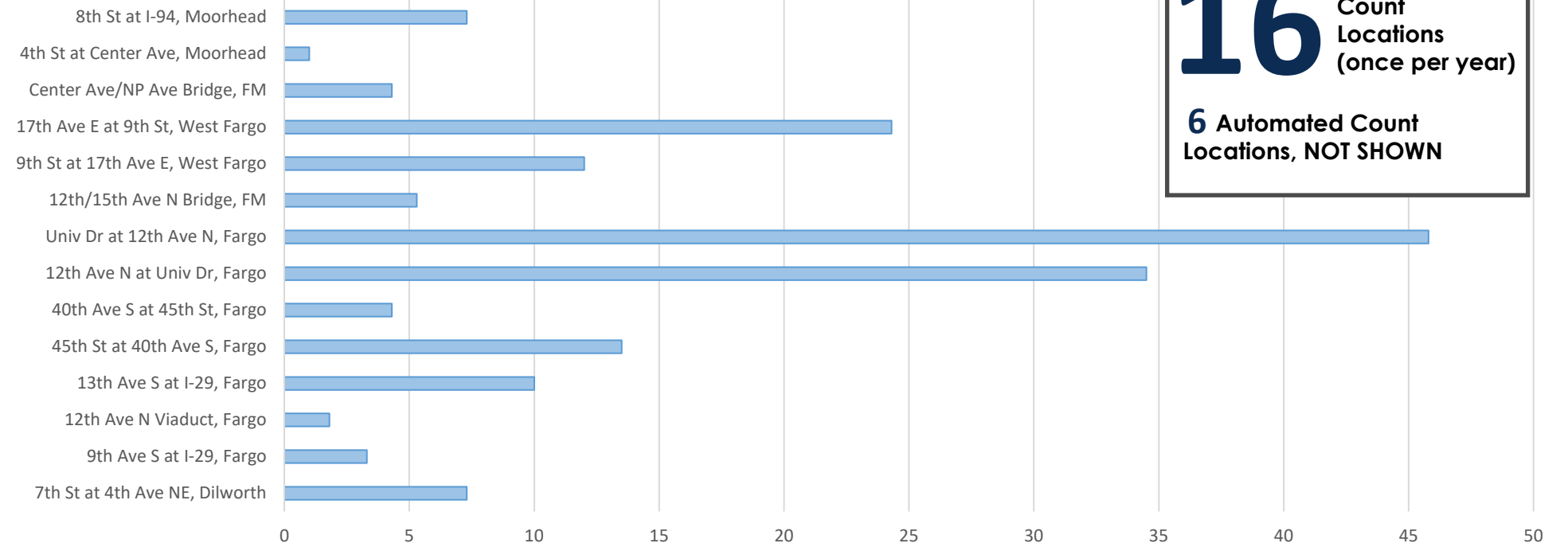


Bike Map to be updated in 2024!

NOTE: For the most up-to-date bike network map, please click [here](#) or see "Fargo-Moorhead Bike Map" in additional resources.

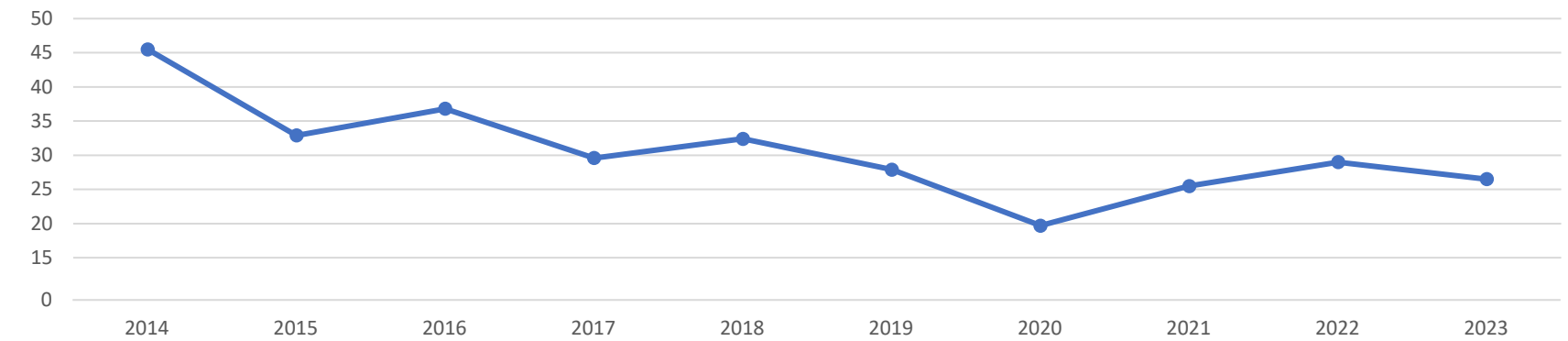
BIKE & PEDESTRIAN

# Average Hourly Pedestrian Counts



**16** Manual Count Locations (once per year)  
**6** Automated Count Locations, NOT SHOWN

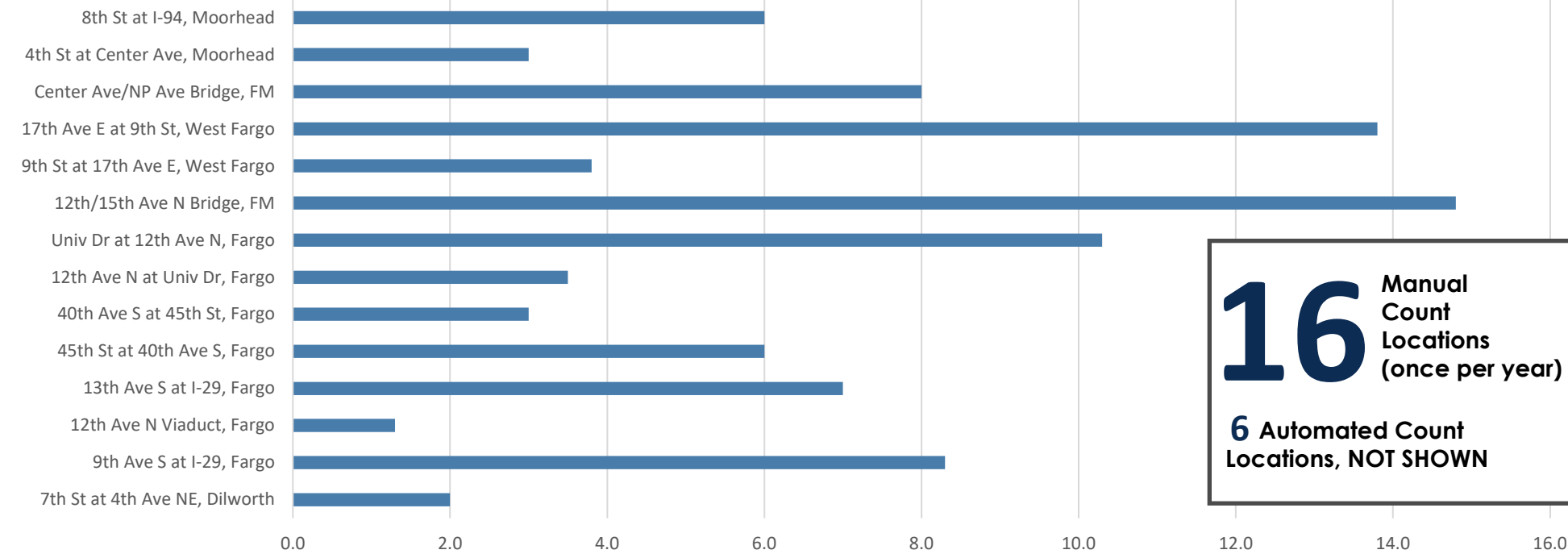
# 10-Year Average Hourly Pedestrian Counts



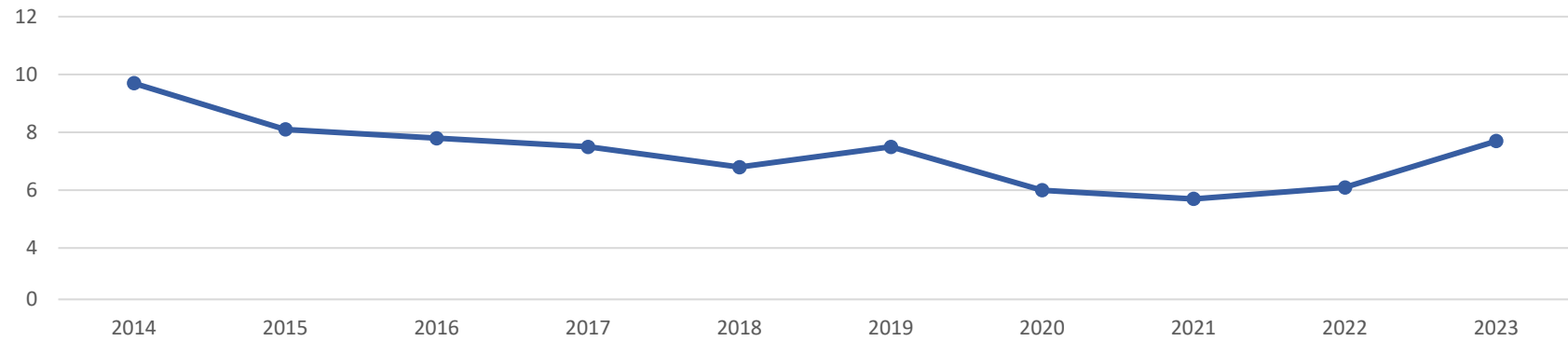
NOTE: For more information about the most recent counts, please click [here](#) or see "Bike & Ped Count Report" in additional resources.

BIKE & PEDESTRIAN

# Average Hourly Bicycle Counts

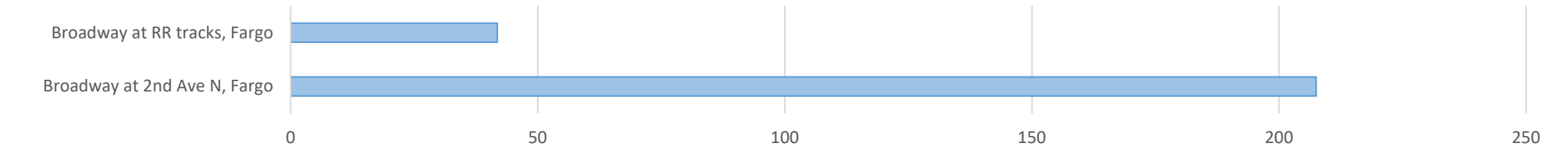


# 10-Year Average Hourly Bicycle Counts

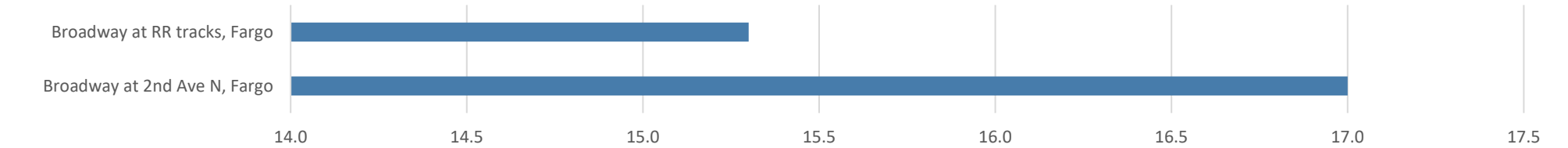


BIKE & PEDESTRIAN

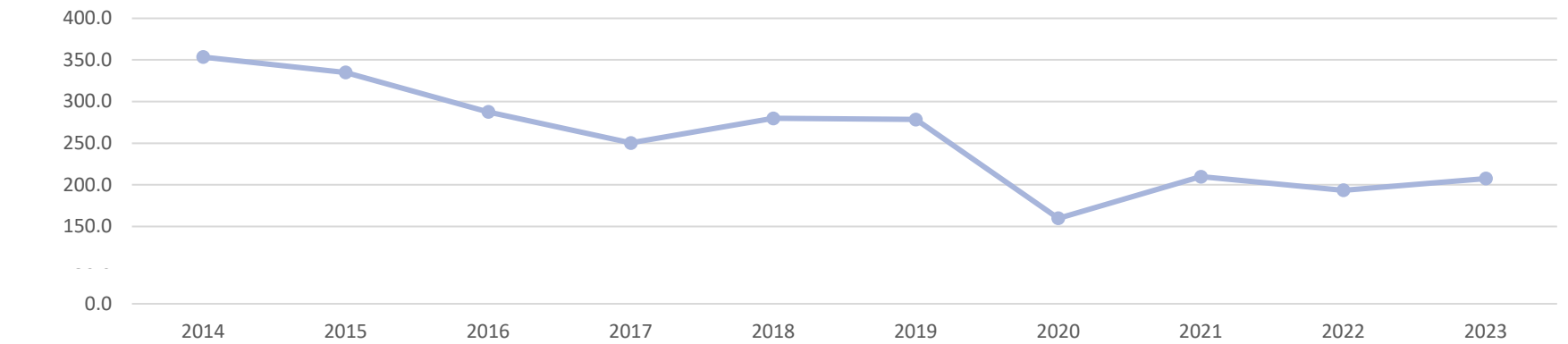
# Broadway Average Hourly Pedestrian Counts



# Broadway Average Hourly Bicycle Counts



# 10-Year Average Hourly Pedestrian Counts



NOTE: For more information about the most recent counts, please click [here](#) or see "Bike & Ped Count Report" in additional resources.

NOTE: For more information about the most recent counts, please click [here](#) or see "Bike & Ped Count Report" in additional resources.

# TRANSIT

## Overview



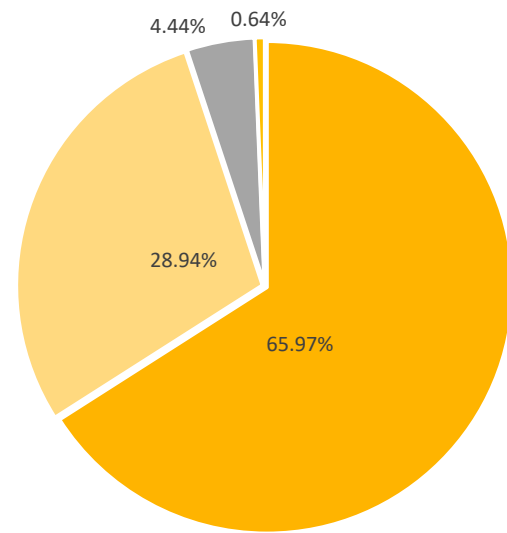
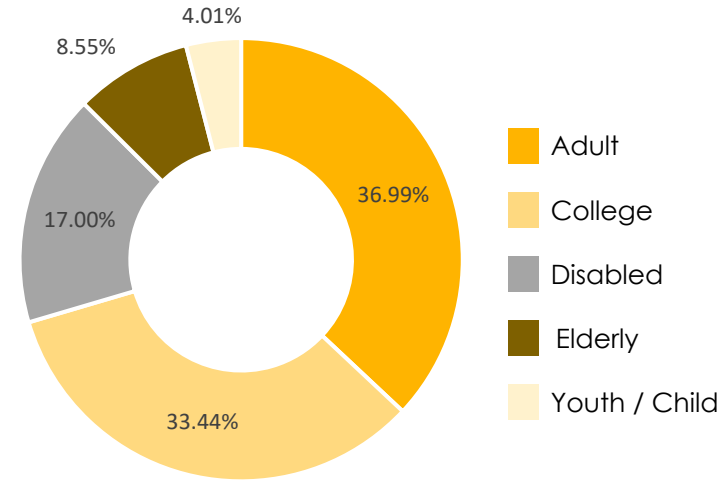
Total MATBUS passengers in 2023

**1,295,317**

Change from year previous

**+4.1%**

Driver shortages have continued to affect MATBUS operations, however, MATBUS was able to extend previously shortened operating hours to 10:15pm. MATBUS has continued to see an increase in ridership since the Covid 19 pandemic.



### Passengers in 2023

Fargo/West Fargo	<b>854,493</b>	<b>+2.09%</b>
Moorhead/Dilworth	<b>374,928</b>	<b>+9.03%</b>
Paratransit	<b>57,545</b>	<b>+3.83%</b>
Metro Senior Ride	<b>8,351</b>	<b>+5.28%</b>

### University Ridership

NDSU	<b>321,537</b>	<b>+8%</b>
MSUM	<b>18,154</b>	<b>-5%</b>
Concordia	<b>12,807</b>	<b>+18%</b>
M   State	<b>13,188</b>	<b>+62%</b>
NDSCS	<b>304</b>	<b>-13%</b>

## TRANSIT

### Projects

#### Route and Service Changes - Due to Driver Shortage (January, 2023)

- MATBUS service end time was changed from 9:45 pm to 10:15 pm
- Route 2 service was reduced to 30 minutes during weekday afternoons
- Route 13 reduced to 60-minute service all day
- Route 15 :00 trip during peak hours was discontinued
- Route 15 added an additional bus leaving the GTC at :30 on weekdays from 10:30 am - 5:30 pm
- Route 11 & 14 service increase; odd hours have two trips from 7:15 am - 5:45 pm
- Route 13 returned to 30-minute service
- Route 36 discontinued (same service as Route 13)
- Route 18 was adjusted to no longer travel west of 47th Street S, increasing the route's on-time performance

#### Marketing

- Promoted transit to new riders during Try MATBUS Week
- LinkFM service during the Street Fair, Scandinavian Festival, Frostival, Celtic Festival, Pangea, and Trollwood Mainstage Musical
- Offered 'Get Your Can on the Bus' promotion during Earth Week
- Educated college students at back to school events
- Participated in the Holiday Lights Parade
- Sponsored a RedHawks and Fargo Force game
- Holiday ridership campaign called 'Season of Giving' providing a free ride with the donation of a non-perishable food item
- Partnered with YWCA for 'stuff the bus'

#### Studies

- Continued Transit Reorganization Study
- Updated Safety Plan in August 2023

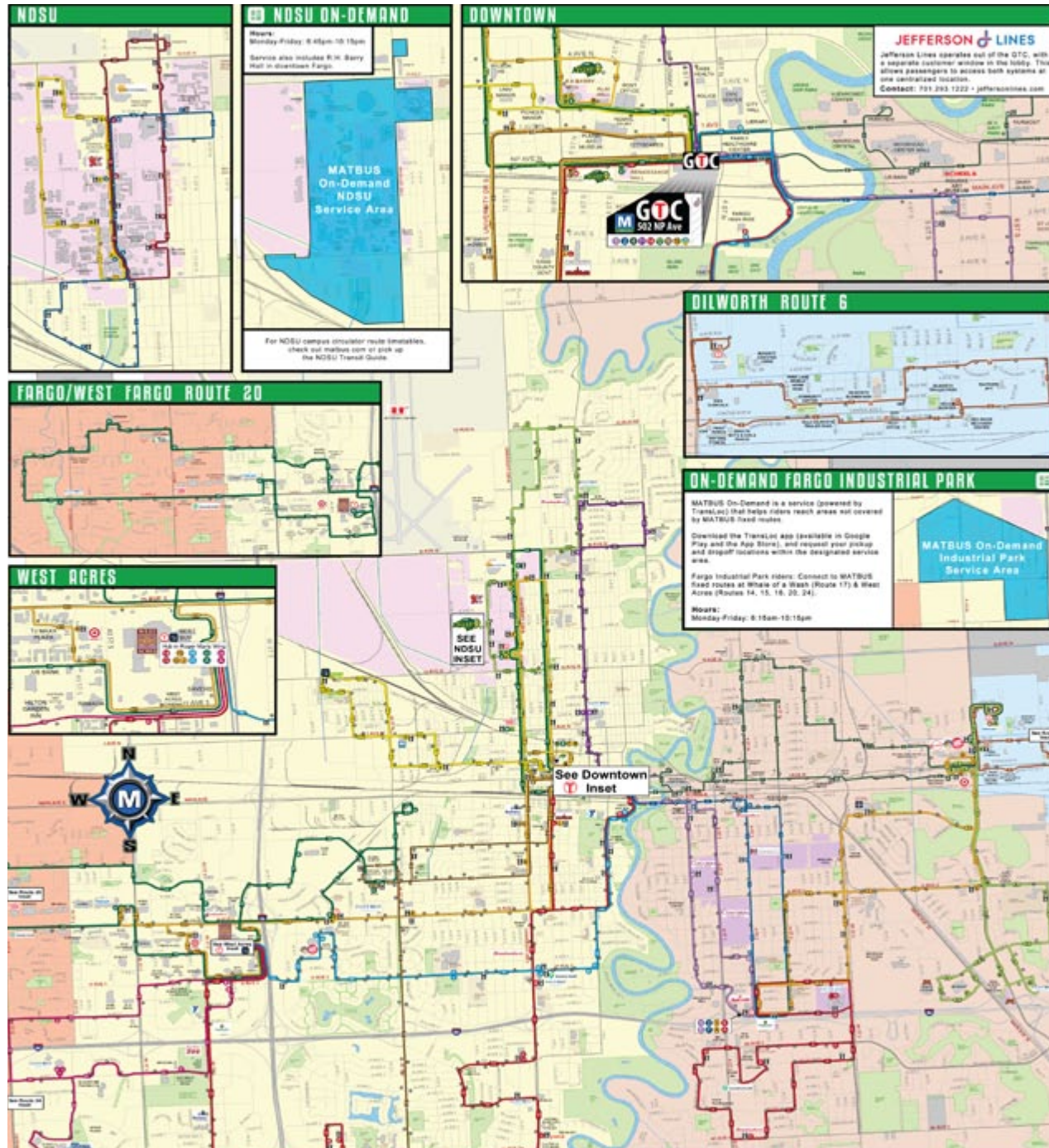
+ / - Designates change from previous year

TRANSIT

# Route Map

### MAP LEGEND

	Fargo City Limits		Route 1
	Moorhead City Limits		Route 2
	West Fargo City Limits		Route 3
	Dilworth City Limits		Route 4
	Higher Education		Route 5
	Public Land / Park		Route 6
	Transfer Hub		Route 9
	Passenger Shelter		Route 11
	Designated Bus Stop		Route 13
	On-Demand Pickup Location		Route 14
	Service On Request		Route 15
			Route 16
			Route 17
			Route 18
			Route 20
			Route 24
			Route 31
			Route 32
			Route 33
			Route 34
			Route 36



TRANSIT

# Inventory

Fleet	Paratransit	Valley Senior Service
11 Moorhead - 35' - diesel	3 Moorhead - Cutaway	4 Moorhead - Caravan
20 Fargo - 35' - diesel	11 Fargo - Cutaway	
2 Fargo - 35' - diesel-electric hybrid	2 Fargo - Passenger Van	
6 Fargo - 40' - diesel-electric hybrid		

## Public Transportation Agency Safety Plan (PTASP)

2023 Safety Performance Metrics\*

Mode of Transit Service	Fatalities (total)	Fatalities (per 100 thousand VRM)	Injuries (total)	Injuries (per 100 thousand VRM)	Safety Events	Safety Events (per 100 thousand VRM)	System Reliability	
							VRM/ Failures	Maintenance within 10% of Scheduled Miles
Fixed Route Bus (ND)	0	0	1.2	0.13	2.2	0.24	9,000	90%
Fixed Route Bus (MN)	0	0	0.6	0.13	1.4	0.29		
On Demand/ADA Paratransit (Senior Ride)	0	0	0	0	0.2	0.06	12,000	90%
Valley Senior Services	0	0	0	0	0	0		

\*Based on five year rolling average of National Transit Database reportable safety events

### Collisions

Preventable: **20**      Unpreventable: **39**      Major\*: **3**

\*collision resulting in serious injury, fatality, or exceeds \$25,000 in damage

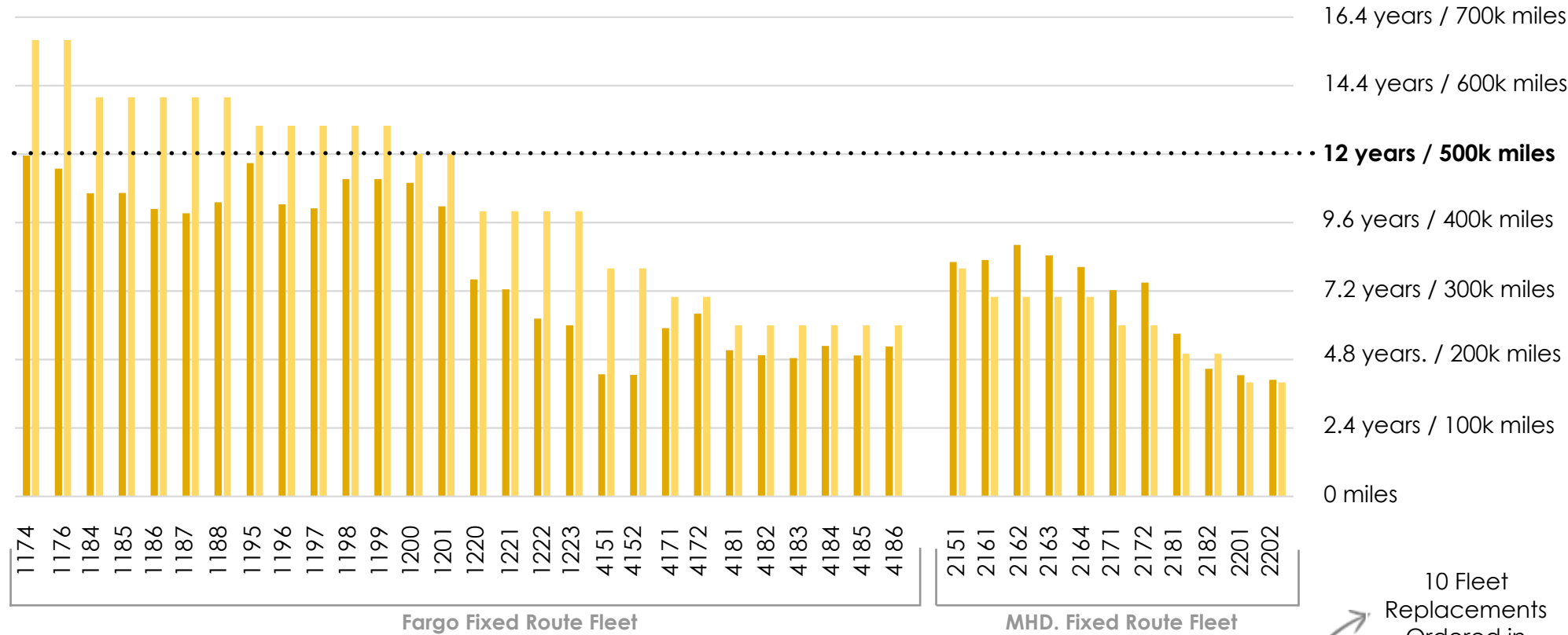


TRANSIT

# Vehicle Condition

## FLEET BUSES (GREATER THAN 35 FEET)

■ VEHICLE MILEAGE (THOUSAND)   
 ■ AGE OF VEHICLE (YEARS)   
 ..... FTA REPLACEMENT GUIDELINE



**AVERAGE MILEAGE FARGO FLEET 340,580 miles**

**AVERAGE MILEAGE MOORHEAD FLEET 284,340 miles**

**14 NEED REPLACEMENT**

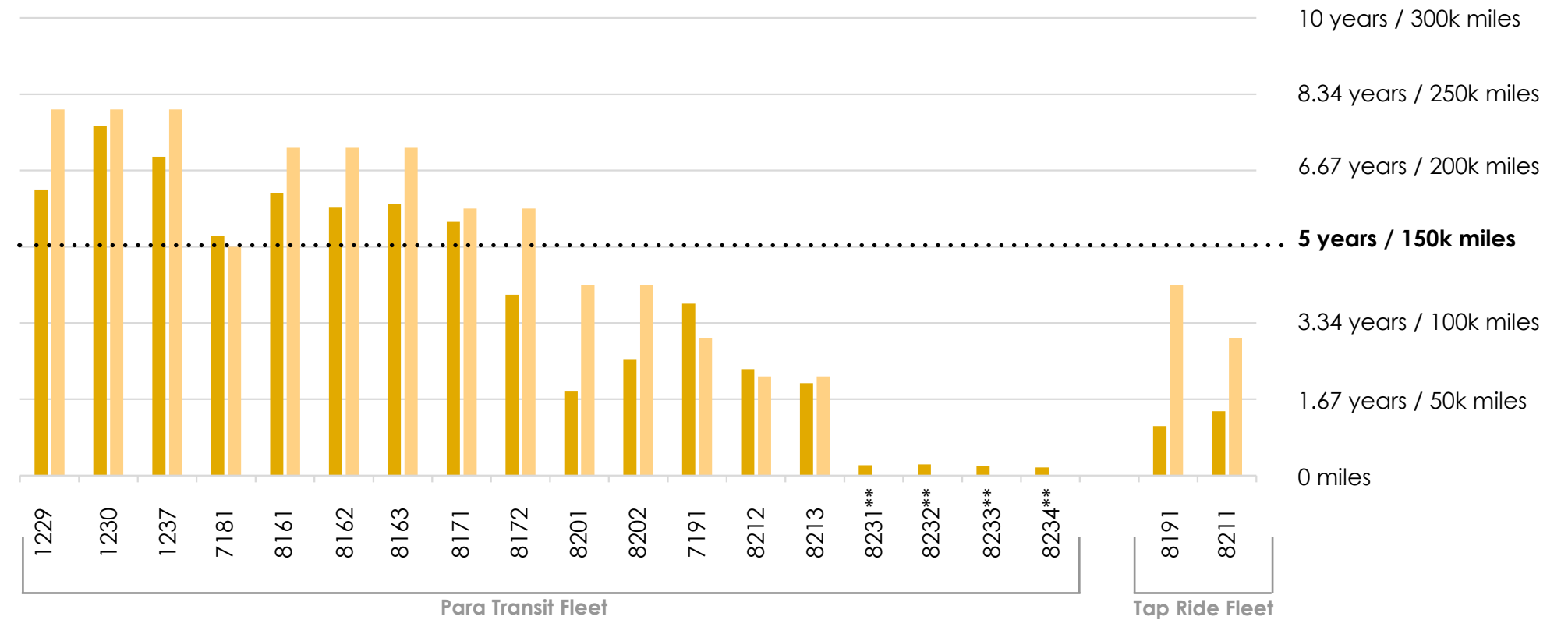
10 Fleet Replacements Ordered in 2022 - 0 received in 2023

TRANSIT

# Vehicle Condition

## PARA TRANSIT BUSES (LESS THAN 30 FEET)

■ VEHICLE MILEAGE (THOUSAND)   
 ■ AGE OF VEHICLE (YEARS)   
 ..... FTA REPLACEMENT GUIDELINE



**AVERAGE MILEAGE PARATRANSIT FLEET 111,480 miles**

**AVERAGE MILEAGE TAP RIDE FLEET 37,384 miles**

**9 NEED REPLACEMENT**

\*\*Replacement received in 2023

6 Paratransit Bus Replacements Ordered in 2022 - 4 received in 2023



# ACRONYMS

<b>ACS</b>	American Community Survey (U.S. Census Bureau)
<b>ADT</b>	Average Daily Traffic
<b>FAR</b>	Hector International Airport, Fargo
<b>FM</b>	Fargo-Moorhead
<b>FTA</b>	Federal Transit Administration
<b>GTC</b>	Ground Transportation Center
<b>MATBUS</b>	Metro Area Transit of Fargo-Moorhead
<b>Metro COG</b>	Fargo-Moorhead Metropolitan Council of Governments
<b>MnDOT</b>	Minnesota Department of Transportation
<b>MPA</b>	Metropolitan Planning Area
<b>MPO</b>	Metropolitan Planning Organization
<b>MSA</b>	Metropolitan Statistical Area (includes all of Cass County and Clay County)
<b>MTG</b>	Metro Transit Garage
<b>MTP</b>	Metropolitan Transportation Plan
<b>NDDOT</b>	North Dakota Department of Transportation
<b>NHS</b>	Non-Highway System
<b>NPMRDS</b>	National Performance Management Research Data Set
<b>TDP</b>	Transit Development Plan
<b>TIP</b>	Transportation Improvement Program
<b>TDM</b>	Travel Demand Model
<b>TMA</b>	Transportation Management Area
<b>TTTR</b>	Truck Travel Time Reliability (only applies to the National Highway System)
<b>VMT</b>	Vehicle Miles Traveled

# ADDITIONAL RESOURCES

## Community Profile:

<https://fred.stlouisfed.org/series/FARGO38UR>

<https://www.bls.gov/lau/lamtrk23.htm>

BIA (Building Industry Association Red River Valley) *Summary of Building Permits Granted 2023*

## Freight:

<https://www.fargoairport.com/december-2023-year-end-statistics/>

[greatamericanstations.com/stations/fargo-nd-far/](https://greatamericanstations.com/stations/fargo-nd-far/)

[safetydata.fra.dot.gov/officeofsafety/publicsite/crossings](https://safetydata.fra.dot.gov/officeofsafety/publicsite/crossings)

**Fargo-Moorhead Bike Map** [fmmetrocog.org/fmbikemap](https://fmmetrocog.org/fmbikemap)

**Bike & Ped Count Report** [fmmetrocog.org/resources/planning/bicycle-pedestrian-planning](https://fmmetrocog.org/resources/planning/bicycle-pedestrian-planning)

**Hector International Airport Year-End Statistics** [fargoairport.com/december-2023-year-end-statistics/](https://fargoairport.com/december-2023-year-end-statistics/)

**Permits Plus** [issuu.com/homebuildersassociation/docs/permits\\_plus\\_issue\\_1\\_2023](https://issuu.com/homebuildersassociation/docs/permits_plus_issue_1_2023)

**Performance Measures** [fmmetrocog.org/resources/performance-measures](https://fmmetrocog.org/resources/performance-measures)

**Transportation Improvement Program (TIP)** [fmmetrocog.org/TIP](https://fmmetrocog.org/TIP)





**METROCOG**

[WWW.FMMETROCOG.ORG](http://WWW.FMMETROCOG.ORG)